



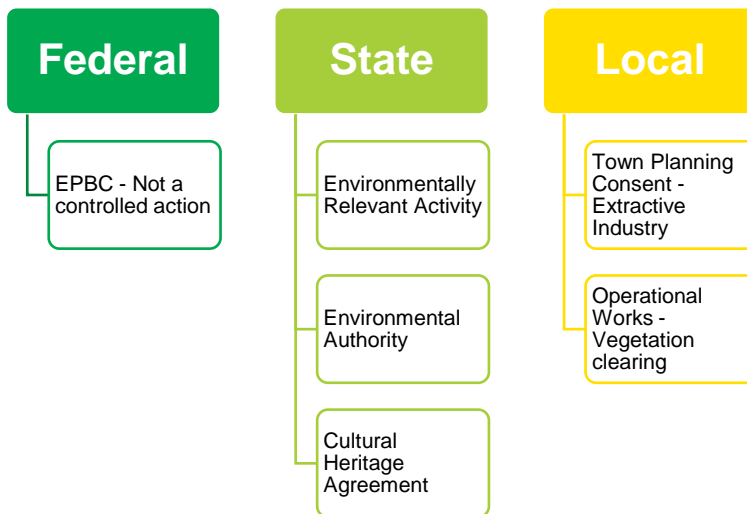
**Building something great**

# Redlynch Quarry FAQs

## 1. Does Boral own Redlynch Quarry?

The Redlynch Quarry commenced formal operation in the 1980s, and under a lease arrangement with the landowner, Boral has operated the quarry since May 1990.

## 2. What types of approvals have been secured to operate Redlynch Quarry?



In May 1990, Mulgrave Shire Council granted a town planning consent to use Lots 8 & 9 on RP749301 for the purpose of an extractive industry, subject to conditions (**the 1990 approval**). The 1990 approval has been amended on three separate occasions and the most current Decision Notice is dated 18 November 2020.

On 30 June 2015, Cairns Regional Council granted an Operational Works (vegetation clearing) approval, subject to conditions. A new Development Application is required to update the Operational Works (vegetation clearing) before 30 August 2026.

Under the *Environmental Protection Act 1994*, on 18 December 2017, the Department issued an Environmental Authority for the following Environmentally Relevant Activities:

*Prescribed ERA, ERA 16 - Extraction and Screening (2):*

*Extracting, other than by dredging, in a year, the following quantity of material, (b) more than 100,000t but not more than 1,000,000t*

*Prescribed ERA, ERA 16 - Extraction and Screening (3):*

*Screening, in a year, the following quantity of material, (b) more than 100,000t but not more than 1,000,000t*



**Building  
something  
great**

All approvals have conditions that Boral is obligated to meet at all times. The key matters that have been conditioned include:

#### Local Government

#### State Government

Land use approval	Environmental licencing	Cultural Heritage
<ul style="list-style-type: none"><li>• Land use</li><li>• Hours of operation</li><li>• Truck movements on certain roads</li><li>• Noise</li><li>• Blasting</li><li>• Noise and dust suppression</li><li>• Buffers</li><li>• Rehabilitation</li><li>• Stormwater</li><li>• Cessation date</li></ul>	<ul style="list-style-type: none"><li>• Annual extraction limits</li><li>• Noise</li><li>• Emissions</li><li>• Water quality</li></ul>	<ul style="list-style-type: none"><li>• Duty of Care – Cultural Heritage Agreement</li></ul>

In relation to Cultural Heritage, in 2014 / 2015, Boral entered into three Cultural Heritage Agreements (CHAs) in order to address Aboriginal cultural heritage at the Redlynch Quarry in accordance with the Aboriginal Cultural Heritage Act 2003 (ACHA). The CHAs were entered into with three Aboriginal parties, the Yirrganydji, Gimuy and Djabugay Peoples. Under these CHAs, inspections and clearances of much of the project area were secured in 2014.

On 12 October 2016, a claim by the Cairns Regional Claim Group for native title over an area encompassing the Redlynch Quarry was accepted for registration. The effect of this registration is

that the Yirrganydji, the Gimuy and the Djabugay are no longer considered to be relevant Aboriginal parties for the project area and Boral are required to enter into a new CHA with the Djabugay Nation Native Title (DNNT) Group.

In accordance with the Cultural Heritage Duty of Care Guidelines (the Guidelines) gazetted under the ACHA, Boral have obtained a priority site clearance from the DNNT representatives for the clearing within the top three benches.



**Building  
something  
great**

### 3. What does the operational continuation of the Redlynch Quarry involve?

In accordance with our current planning and environmental approvals, Boral will progressively work the main ridgeline from the top of the hill in a downward direction (“top down” extraction program) where new quarry benches will start at the top of the hill and then progressively worked down to the current pit level to minimise the noise and visual impact on the surrounding community.

The haulage route has been re-established and the next phase of works involves vegetation clearing to open up the first three benches, to allow for extraction to commence in accordance with current conditions (Figure 1 below).

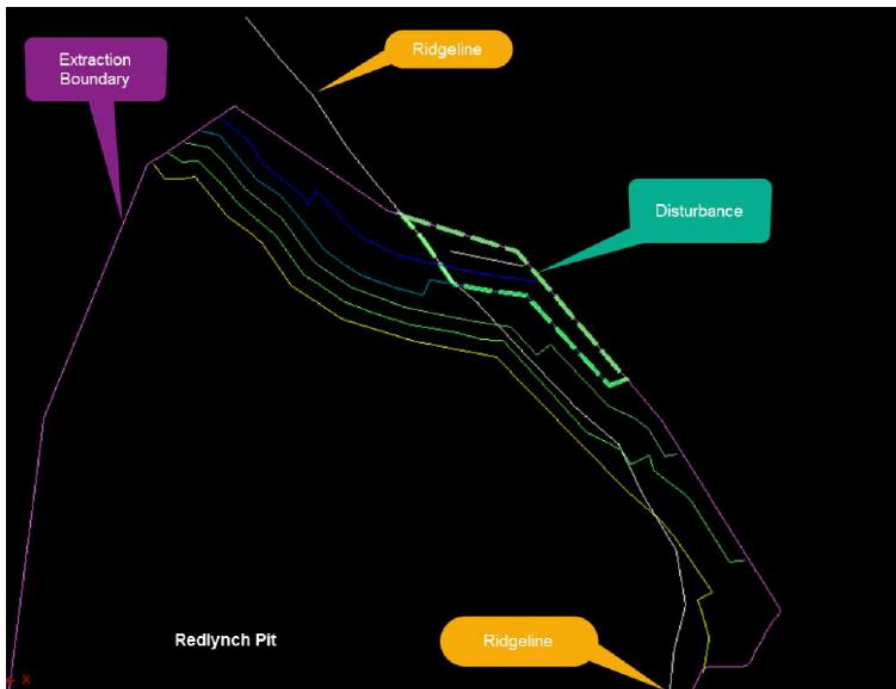


Figure 1

### 4. What vegetation clearing is currently occurring at Redlynch Quarry?

In accordance with conditions of the Operational Works (vegetation clearing) approval, on 29 May 2024, Council received a Notice of Intent to Clear Vegetation at Redlynch Quarry to clear vegetation within the area where the first three benches occur.

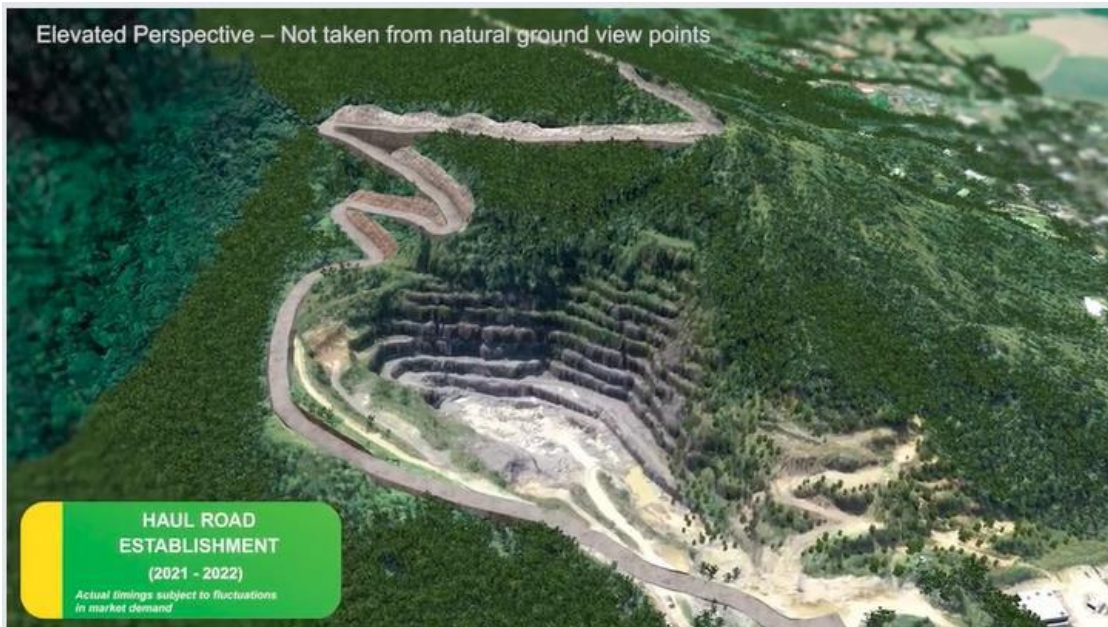
In accordance with condition 5 of the operational works approval, Boral notified Council’s Strategic Planning and Approvals Branch at least two (2) days prior to the proposed date of commencement of any approved vegetation clearing. We therefore hereby provide notice to Council that clearing works are proposed to commence on Monday 3 June 2024 for a portion of vegetation to commence opening the top three benches. In accordance with the existing operational works approval, the proposed disturbance area (**Attachment 1**) forms part of the approved vegetation clearing area within the identified extraction limits.

In accordance with conditions of approval, a qualified spotter catcher will be on site prior to commencing clearing. Should any animals be found, the qualified spotter catcher will relocate them to the nearest suitable habitat on or off site.

These works will allow for Boral to continue its approved operations and will be undertaken having regard to the visual amenity impacts on the surrounding local community.



**Building  
something  
great**



## 5. How does Boral engage with the community and our neighbours?

Redlynch Quarry was approved by Mulgrave Shire Council in May 1990. The amendments to this approval did not require to be publicly notified.

To facilitate open and transparent communication with our immediate neighbours and Council representatives, Boral have established the Redlynch Quarry Liaison Group. This Quarry Liaison Group meeting was established in 2008, and regular meetings are held at The Northern Outlook at Redlynch. Minutes can be found on our website: [boral.com.au/redlynch](http://boral.com.au/redlynch)

This proactive engagement ensures that Boral can minimise any impacts on their neighbours, and in many cases, work with them to arrive on solutions.

To communicate to the broader community, in the past, we have sent out newsletters via mailbox drop, but as part of our sustainability objectives, we have now switched to a more environmentally friendly way of communicating and refer everyone to visit our web site instead. [boral.com.au/redlynch](http://boral.com.au/redlynch)

## 6. How long are Boral intending to operate the Redlynch Quarry?

Currently, in accordance with our current planning approvals, Boral can lawfully operate up to 2036. However, based on our current assumptions around operational capacity of the plant, projected market demand, and extraction limits, we estimate that the life of the quarry could exceed this timeframe. In the event that this occurs, so Boral will need to seek additional approvals from Cairns Regional Council.

Boral will be continually reviewing the quarry's status and updates are given via our Quarry Liaison Group and subsequent minutes that can be accessed on the website.

[boral.com.au/redlynch](http://boral.com.au/redlynch)

## 7. When will Boral blast? Will we be notified?

The quarry conducts scheduled blasts, depending on demand, but generally once or twice a month. We have a blast register where interested parties can add their name and contact details by calling the quarry or contact us via [feedback\\_NR@boral.com.au](mailto:feedback_NR@boral.com.au)



**Building  
something  
great**

#### **8. Will the operational continuation of the Redlynch Quarry generate more traffic on the roads?**

In accordance with our current approvals, the quarry's operating hours are from 7am to 6pm, five days a week (Monday to Friday) and 7am to 12noon on Saturdays. No operations on Sundays or Public Holidays.

Redlynch Quarry provides raw materials for regional development and infrastructure projects within the Cairns region. In accordance with our current approvals, Boral must limit truck numbers using Redlynch Intake Road to 26 loaded trips per hour.

Boral also has developed and operates under a Road Transport Code of Conduct that will apply to all extractive road transport vehicles. The Code has been designed to maximise safety in all aspects of road haulage and to minimise the impact of Boral's trucks on other road users and the community.

If you observe unacceptable truck driver behaviour, we ask that you please contact the quarry on 4039 1206 immediately or at your earliest convenience. The earlier Boral is aware of the issue, the quicker we can respond and follow up. The information we require include date, time, and registration. Any other information such as colour of the truck, truck and dog, or any other description will assist in the investigation.

Please note: Redlynch Intake Road is a public road and is free to be accessed by all trucks, not restricted to trucks visiting the quarry.

#### **9. How do I contact Boral if I have any queries?**

Community enquiries should be directed to BORAL via [feedback\\_NR@boral.com.au](mailto:feedback_NR@boral.com.au)

Boral has a complaint management system that ensures matters are addressed quickly and responsibly, following up on all community inquiries and concerns; we have a good and respectful relationship with our neighbours and the community.

Any information can be sought via the quarry web site and our feedback line.

[boral.com.au/redlynch](http://boral.com.au/redlynch)