

A photograph of a city skyline at dusk or dawn, with various skyscrapers and buildings. The sky is a mix of blue and orange. In the foreground, there's a dark, silhouetted structure, possibly a bridge or a building. The overall scene is a dense urban landscape.

Community Consultative Committee

Peppertree Quarry

March 2022

# AGENDA

1. Welcome and introductions
2. Confirmation of minutes and actions
3. Business arising
4. Correspondence
5. Operations over the last 3 months
6. Environmental performance
  - a. Incidents
  - b. Complaints
  - c. Air
  - d. Noise
  - e. Blast
  - f. Water – surface and ground
  - g. Heritage
  - h. Ecology
7. Stakeholder Engagement
7. Stakeholder Engagement
8. Plans for the next 3 months
9. General Business
10. Next meetings - June 2022



# 01

## Welcome and apologies



# 02

## Confirmation of minutes



# 03

## Business arising

- Nature of the PM2.5 particles to be defined
- Production 2020 versus production 2021  
2020- 2 402 443 tonnes  
2021- 2 359 000 tonnes



# 04

Correspondence

Dec 2021 – Mar 2022



## **Department of Planning, Industry and Environment**

Management plan approval – Water Management Plan, Aboriginal Heritage Management Plan, Biodiversity and rehabilitation Management Plan, Construction Noise Management plan

AEMR 2021

TSP HVAS failure

DPE visit March

## **EPA**

TSP HVAS failure

## **Resource Regulator**

Entanglement audit

## **Goulburn Mulwaree Council**

Construction traffic management plan and haul road plans approved

## **Geoff Clark**

weather data reviews – weather station monthly reviews

# 05

Operations  
Past 3 months





## **Safety**

Focus on new "life saving commitments"

## **Overburden**

Pre works commenced. – contract in place with OB contractor – Coast Wide

## **Pit Update**

Shut down over Christmas 23-12-2021 till the 10-01-2022, during this time we continued to complete maintenance. North conveyor built and now operational

## **Processing (STQ)**

Shut down over Christmas 23-12-2021 till the 10-01-2022, during this time we continued to load material on trains at a reduced rate and complete maintenance. Period in early March, operations temporarily stopped due to rain and rail line blockage.

## **People**

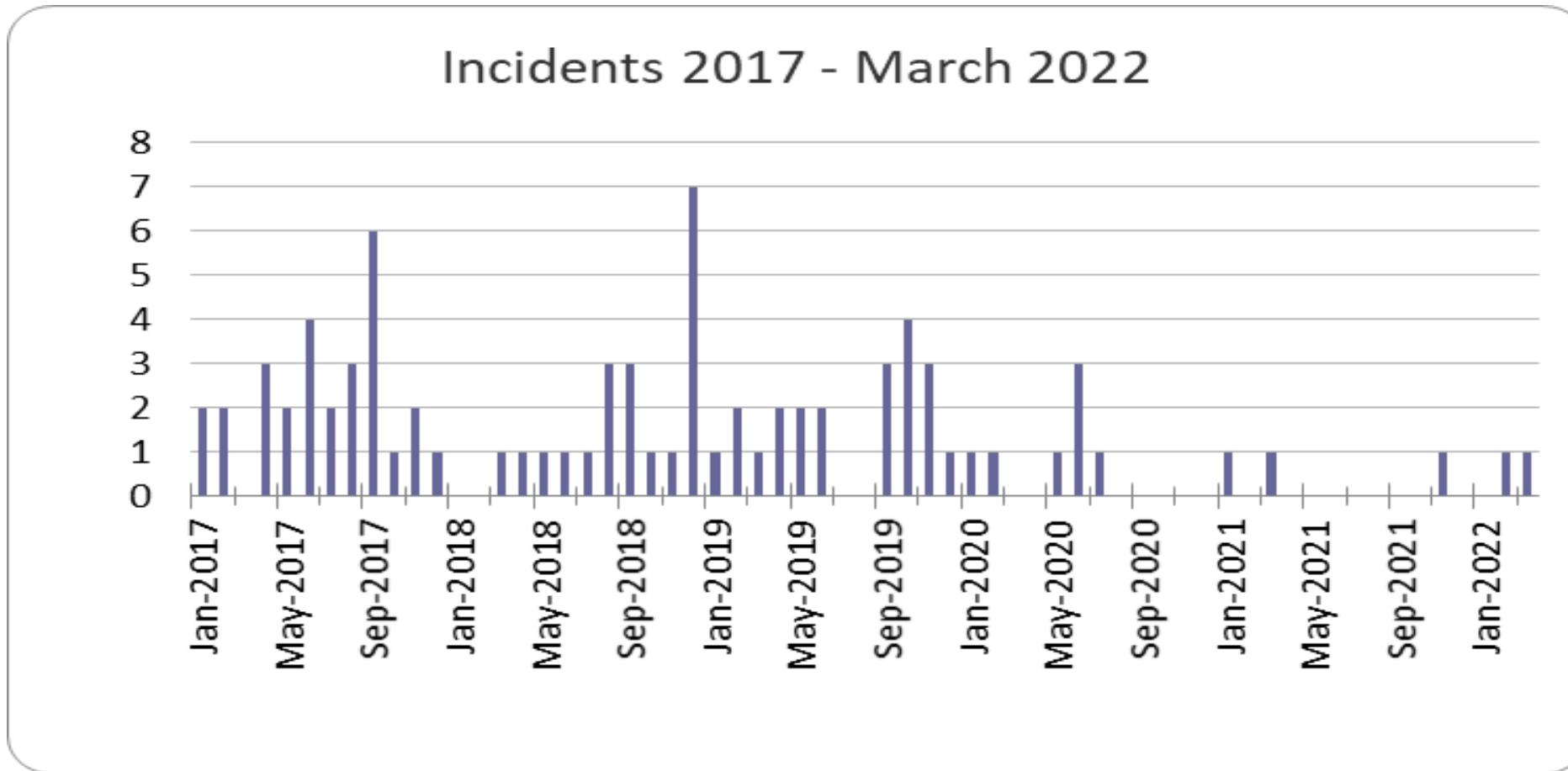
New Production manager, Superintendent, Trainer and Environment advisor now on board

# 06

## Environmental Performance

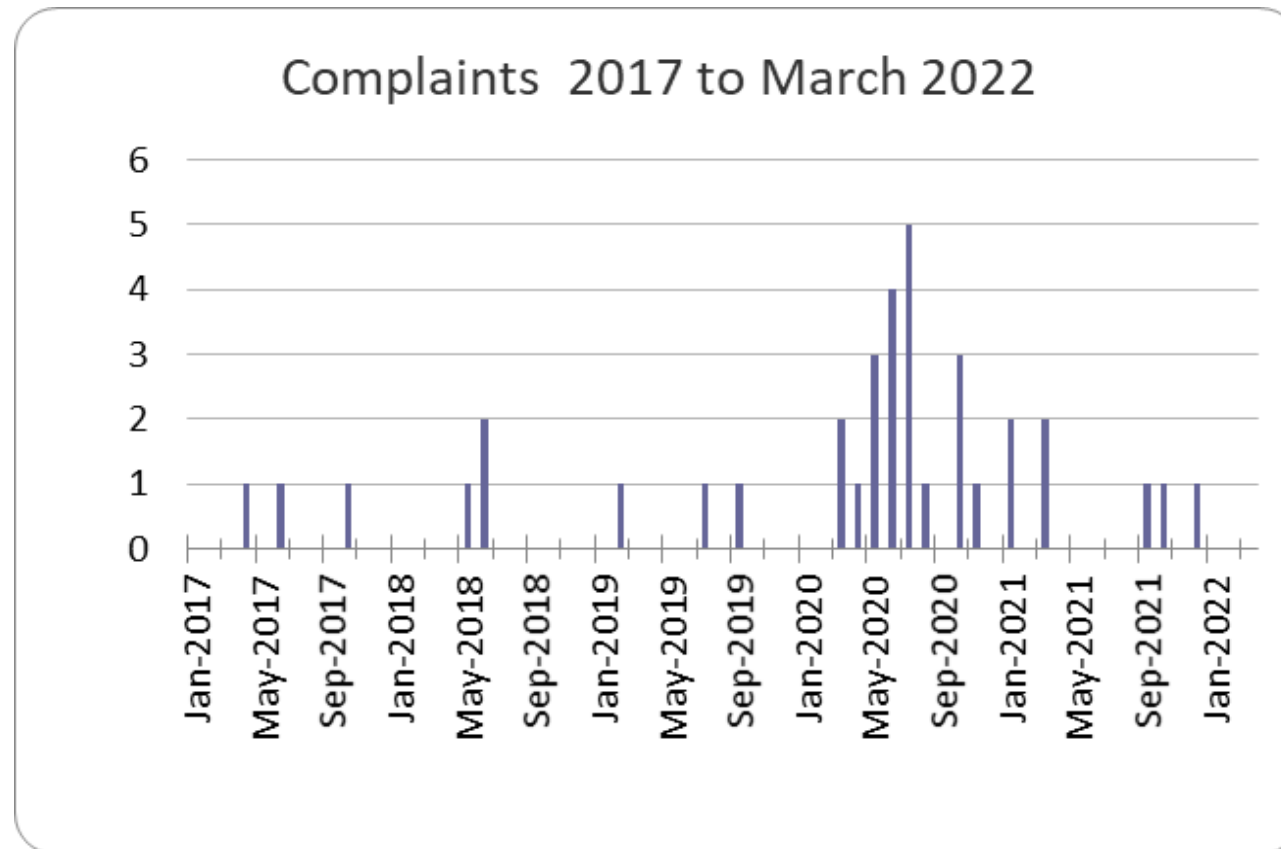


# Environmental Incidents Dec 2021 to March 2022



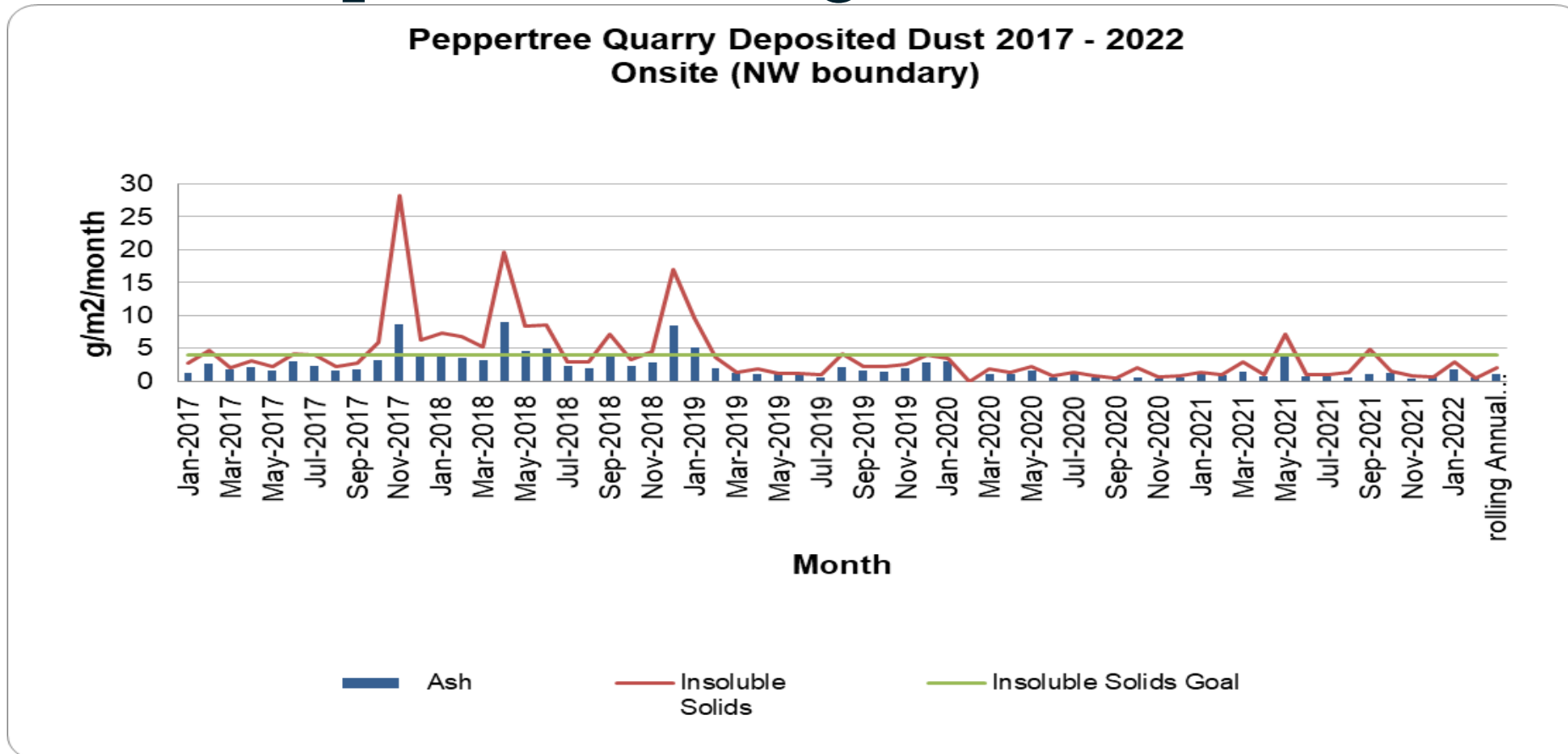
- > Dec- nil Jan – nil Feb- 1 (land slip behind TLO shed) Mar- 1 (land slip behind TLO shed)

# Environmental Complaints Dec 2021 to March 2022



> Dec – 1 (Dust) Jan- nil Feb- nil Mar- nil

# Air – Dust deposition Gauge D1

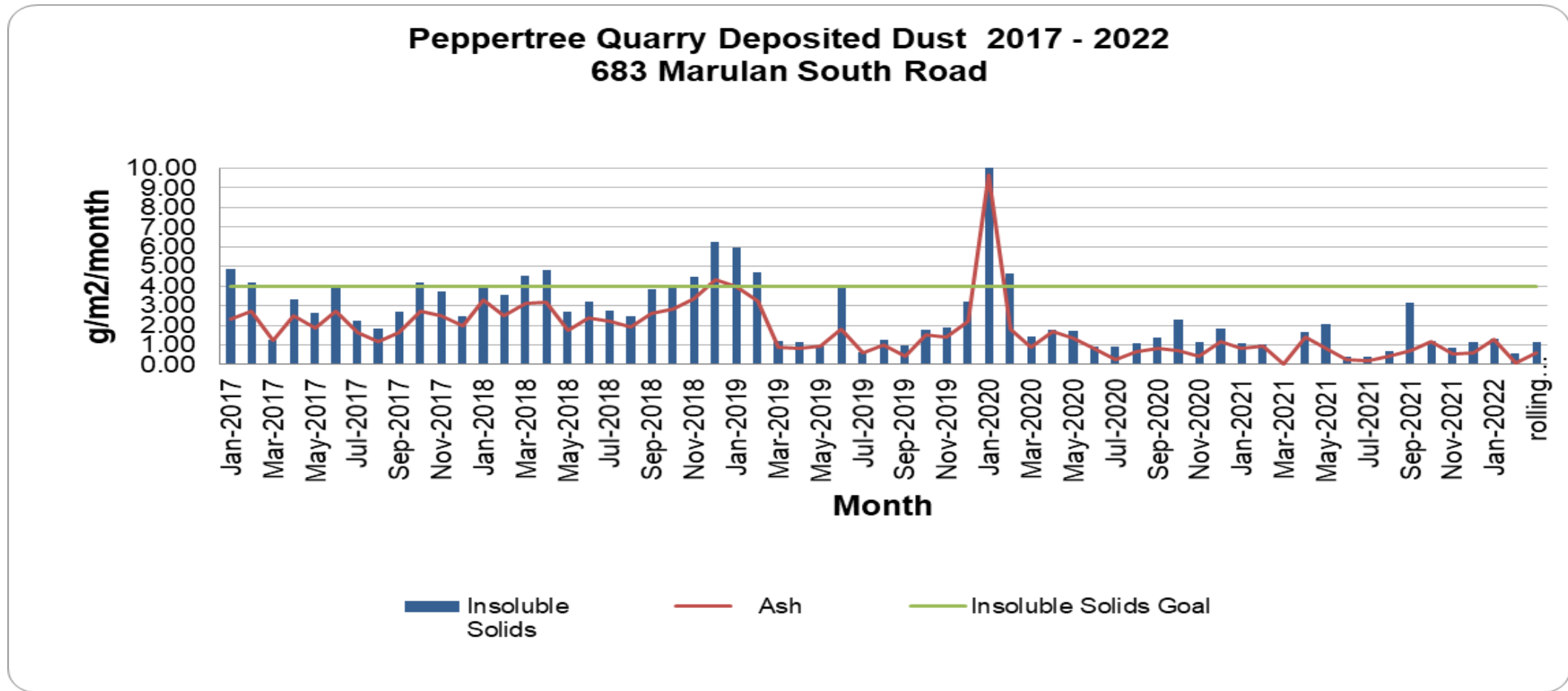


**Annual Average goal of 4gm<sup>2</sup>/month**

In compliance

Annual average below goal at the boundary

# Air – Dust Deposition Gauge D2

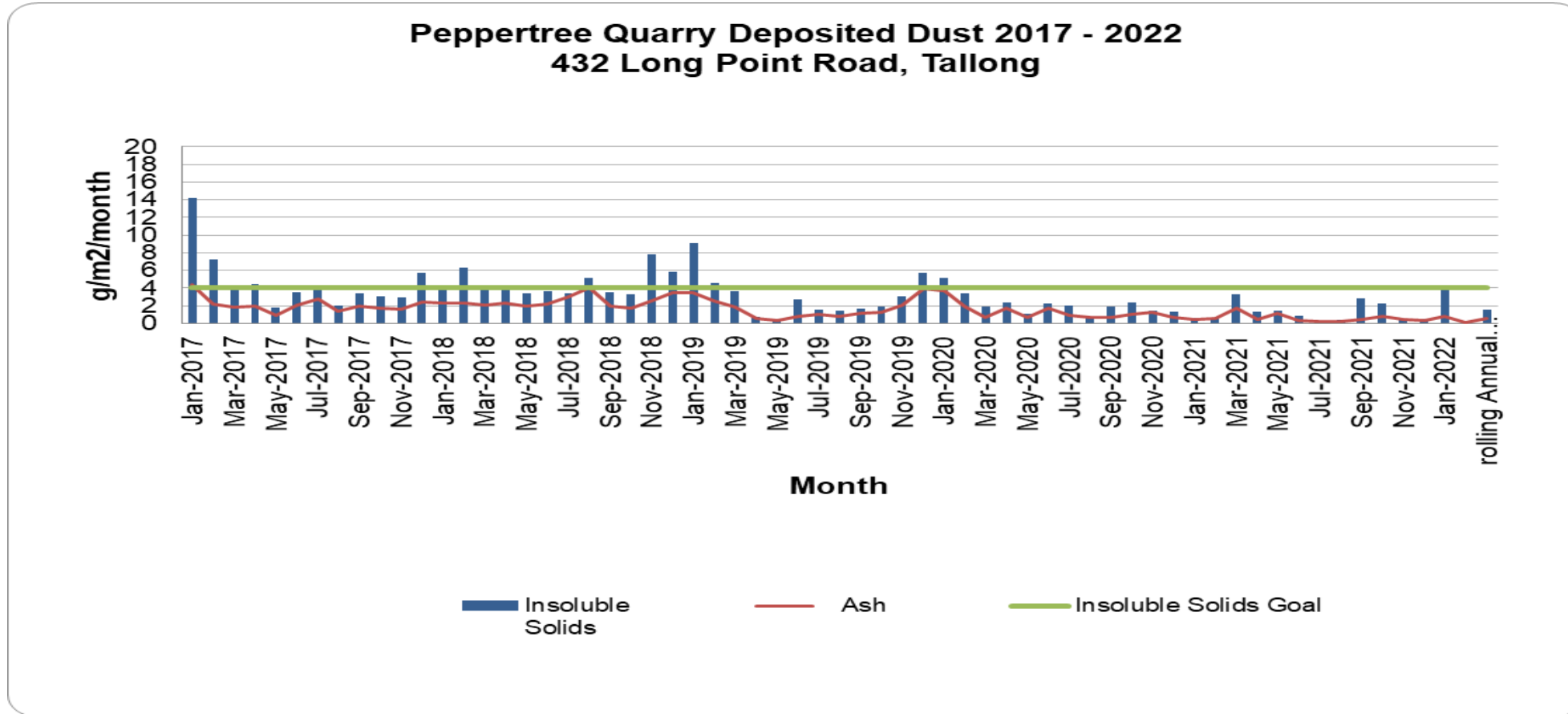


**Annual Average goal of 4gm2/month**

In compliance

Annual average below goal at the boundary

# Air – Dust Deposition gauge D3

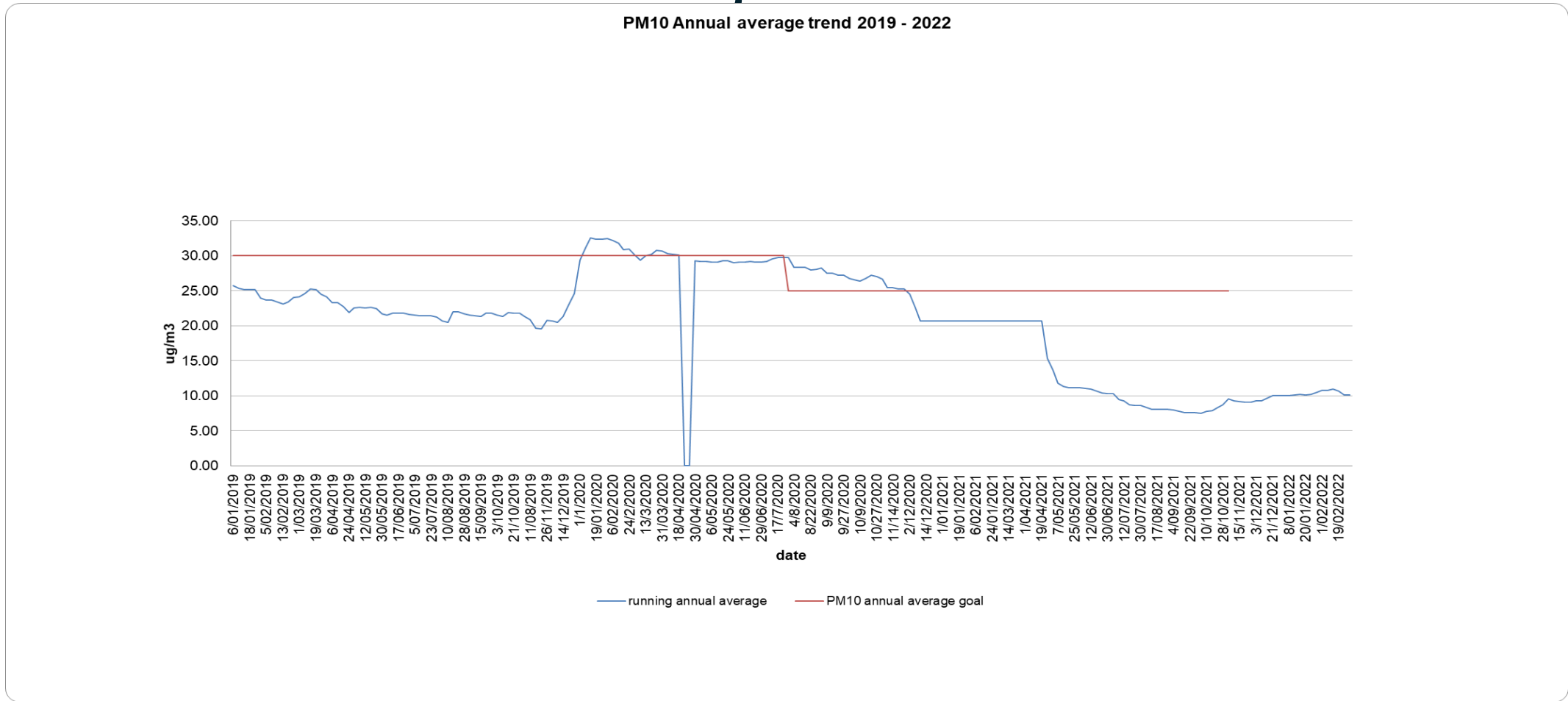


**Annual Average goal of 4gm<sup>2</sup>/month**

In compliance

Annual average below goal at the boundary

# Air – PM10 annual average



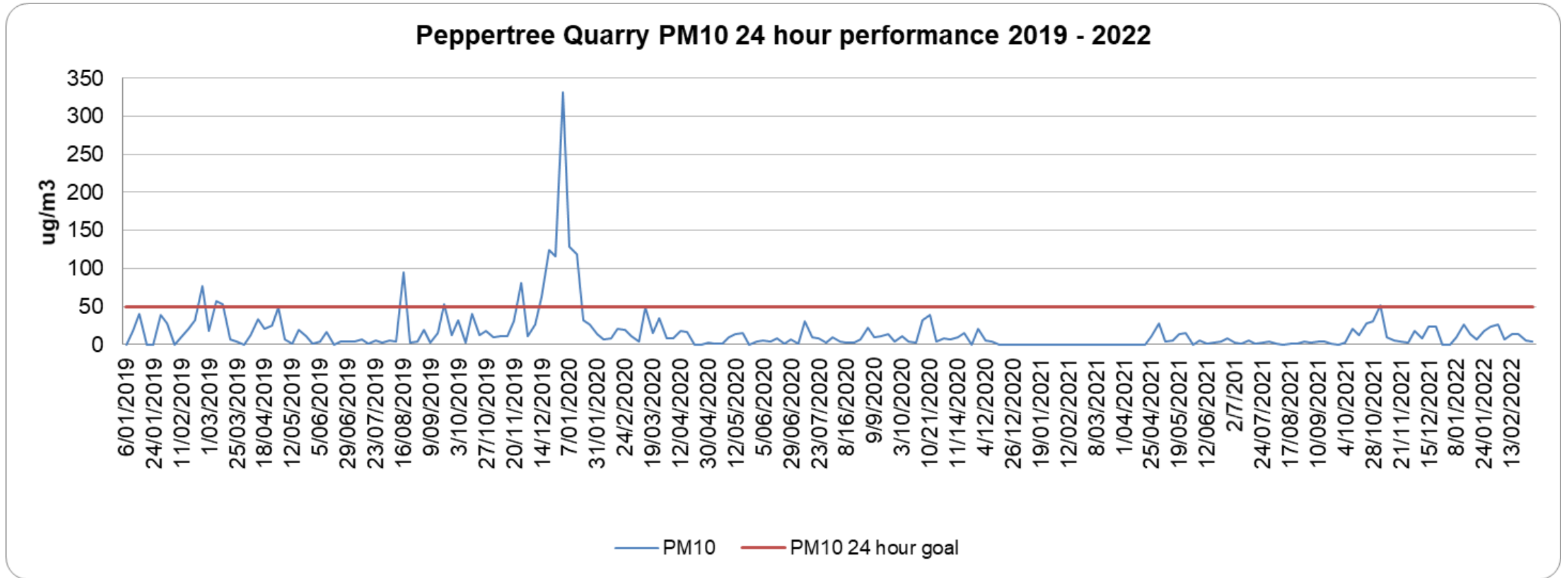
**Annual Average goal of 25ug/m<sup>3</sup>**

In compliance

Annual average below goal at the boundary



# Air – PM10 24 Hour performance

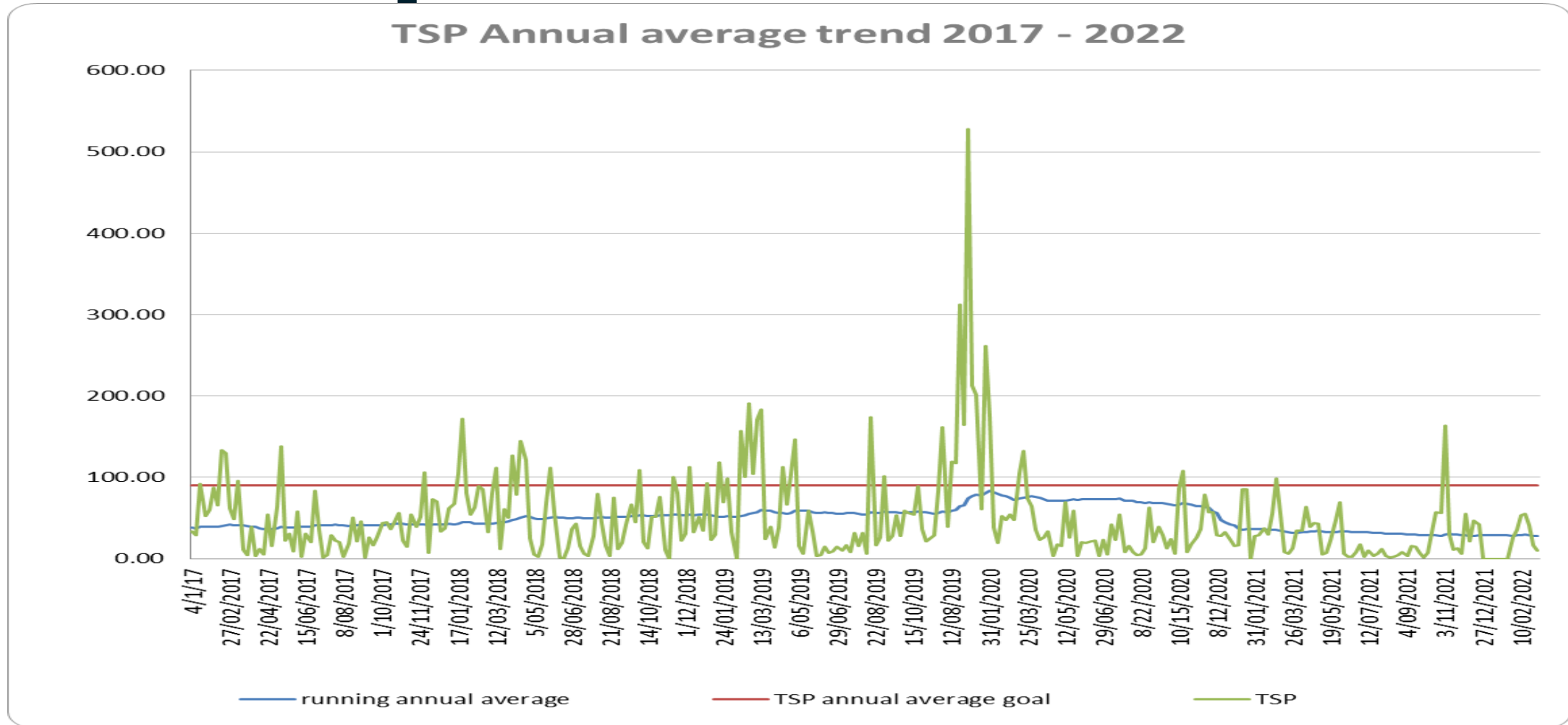


## 24 hour goal of 50ug/m3

In compliance

Annual average below goal at the boundary

# Air – Total Suspended Particulates

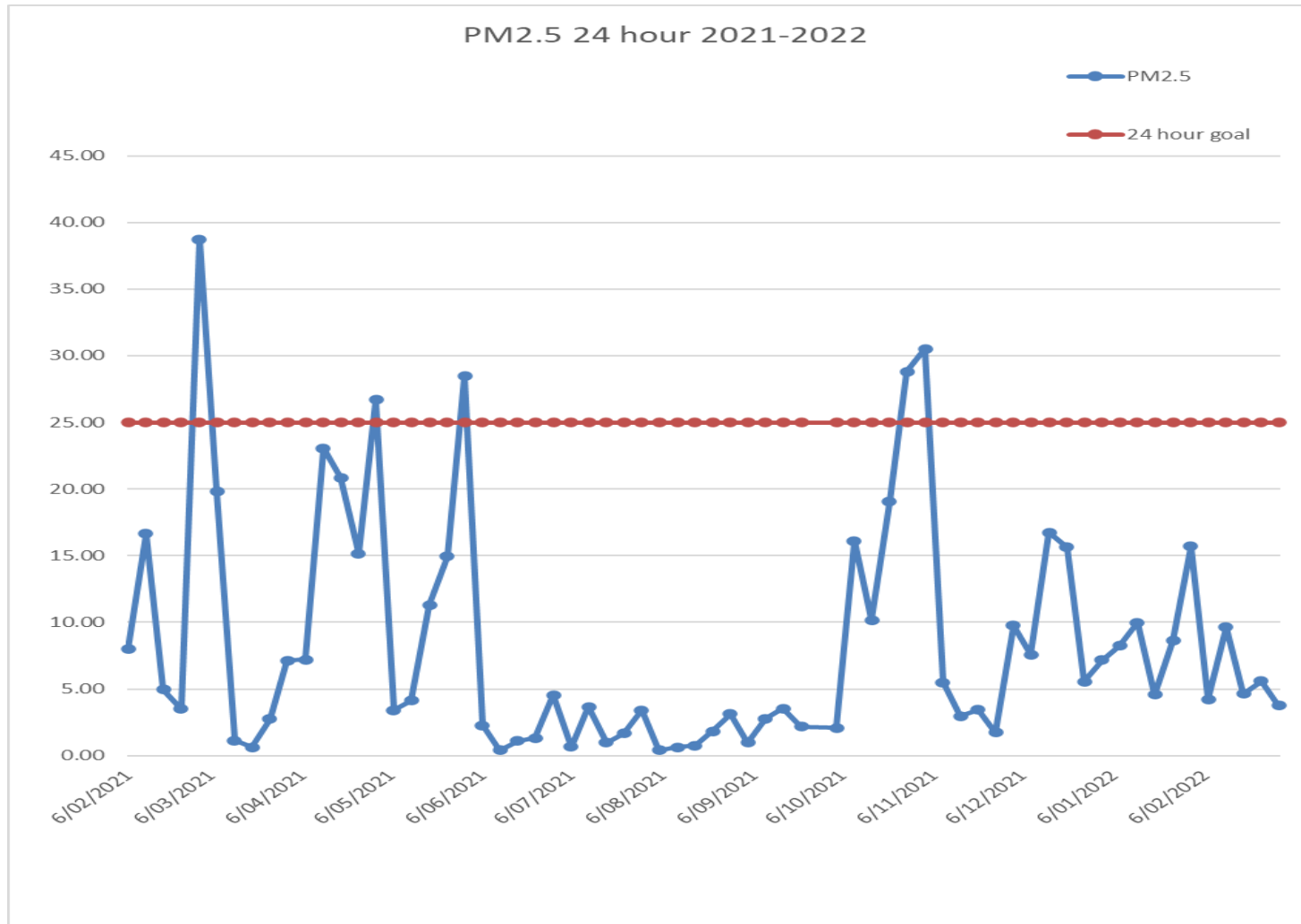


Annual Average goal of 90 $\mu\text{g}/\text{m}^3$

In compliance

Annual average below goal at the boundary

# Air – PM2.5



In compliance for the past 3 months. Peppertree operations are NE of the PM2.5 gauge

# Noise – quarterly monitoring

Monitoring was undertaken over the 7<sup>th</sup>, 8<sup>th</sup> and 9<sup>th</sup> December 2021. 15<sup>th</sup>, 16<sup>th</sup>, and 17<sup>th</sup> March 2022

Results for the December round are in compliance.

March results are pending, next round due in June.

# Noise – quarterly monitoring

Receptor ID	Description	Date	Start Time	Assessment Period	Compliance Assessment (Leq, 15-minute in dBA)			Comply with Criteria? (Y/N)	NPI Annoying (Quarry) Characteristic ? (Y/N)
					Criteria	Quarry Noise	Comparison		
R2	Bartolo	07-Dec-21	14:00	Day	40	20	-20	Y	N
		08-Dec-21	10:15	Day	40	20	-20	Y	N
		08-Dec-21	10:30	Day	40	20	-20	Y	N
		08-Dec-21	20:45	Evening	35	22	-13	Y	N
		08-Dec-21	21:00	Evening	35	23	-12	Y	N
R3	Cooper	07-Dec-21	14:30	Day	40	22	-18	Y	N
		08-Dec-21	11:00	Day	40	23	-17	Y	N
		08-Dec-21	11:16	Day	40	22	-18	Y	N
		08-Dec-21	21:30	Evening	35	22	-13	Y	N
		08-Dec-21	21:46	Evening	35	23	-12	Y	N
R4	McClellan	07-Dec-21	15:30	Day	40	24	-16	Y	N
		08-Dec-21	09:17	Day	40	24	-16	Y	N
		08-Dec-21	09:32	Day	40	27	-13	Y	N
		08-Dec-21	19:48	Evening	35	25	-10	Y	N
		08-Dec-21	20:03	Evening	35	23	-12	Y	N
R8	Pace <sup>1</sup>	07-Dec-21	16:30	Day	40	31	-9	Y	N
		08-Dec-21	08:30	Day	40	31	-9	Y	N
		08-Dec-21	08:45	Day	40	31	-9	Y	N
		08-Dec-21	19:00	Evening	35	30	-5	Y	N
		08-Dec-21	19:15	Evening	35	30	-5	Y	N

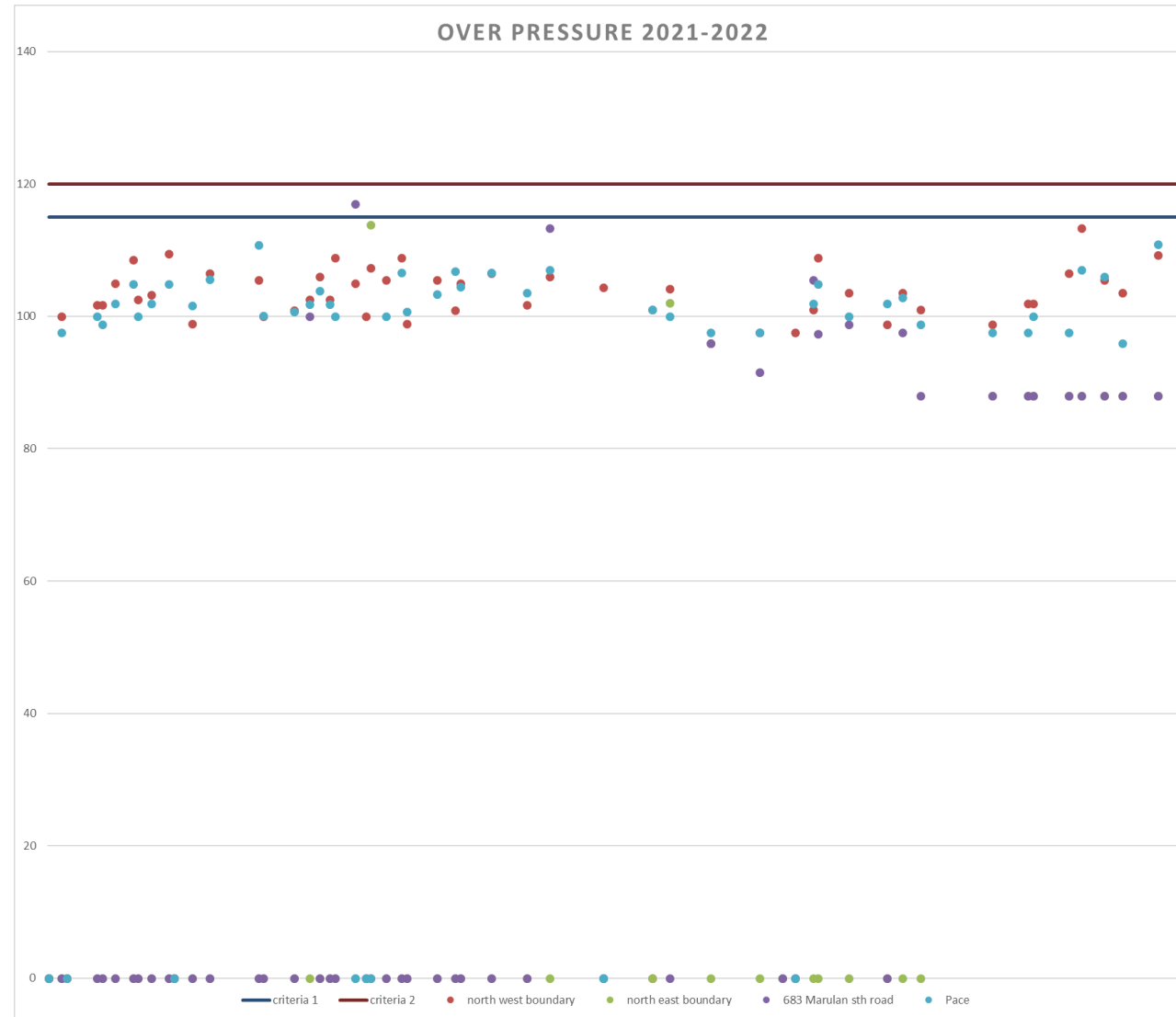
# Noise – quarterly monitoring

Receptor ID	Description	Date	Start Time	Assessment Period	Compliance Assessment (Leq, 15-minute in dBA)			Comply with Criteria? (Y/N)	NPI Annoying (Quarry) Characteristic ? (Y/N)
					Criteria	Quarry Noise	Comparison		
R17	Myers	07-Dec-21	12:45	Day	40	24	-16	Y	N
		08-Dec-21	13:00	Day	40	23	-17	Y	N
		08-Dec-21	13:15	Day	40	28	-12	Y	N
		08-Dec-21	22:30	Night	35	27	-8	Y	N
		08-Dec-21	22:46	Night	35	27	-8	Y	N

# Noise – quarterly monitoring – night time assessment

ID	Description	Date	Start Time	Site Audible (Y/N)	Compliance Assessment (Lmax / L1, 1 minute in dBA)			Comply with Criteria? (Y/N)
					Criteria	Quarry Noise	Comparison	
R2	Bartolo	8-Dec-21	20:45 <sup>2</sup>	N	52	-	N/A	Y
		8-Dec-21	21:00 <sup>2</sup>	N	52	-	N/A	Y
R3	Cooper	8-Dec-21	21:30 <sup>2</sup>	N	52	-	N/A	Y
		8-Dec-21	21:46 <sup>2</sup>	N	52	-	N/A	Y
R4	McClellan	8-Dec-21	19:48 <sup>2</sup>	Y	52	30	-22	Y
		8-Dec-21	20:03 <sup>2</sup>	Y	52	32	-20	Y
R8	Pace <sup>1</sup>	8-Dec-21	19:00 <sup>2</sup>	-	52	30	-22	Y
		8-Dec-21	19:15 <sup>2</sup>	-	52	30	-22	Y
R17	Myers	8-Dec-21	22:30	Y	52	46	-6	Y
		8-Dec-21	22:46	Y	52	46	-6	Y

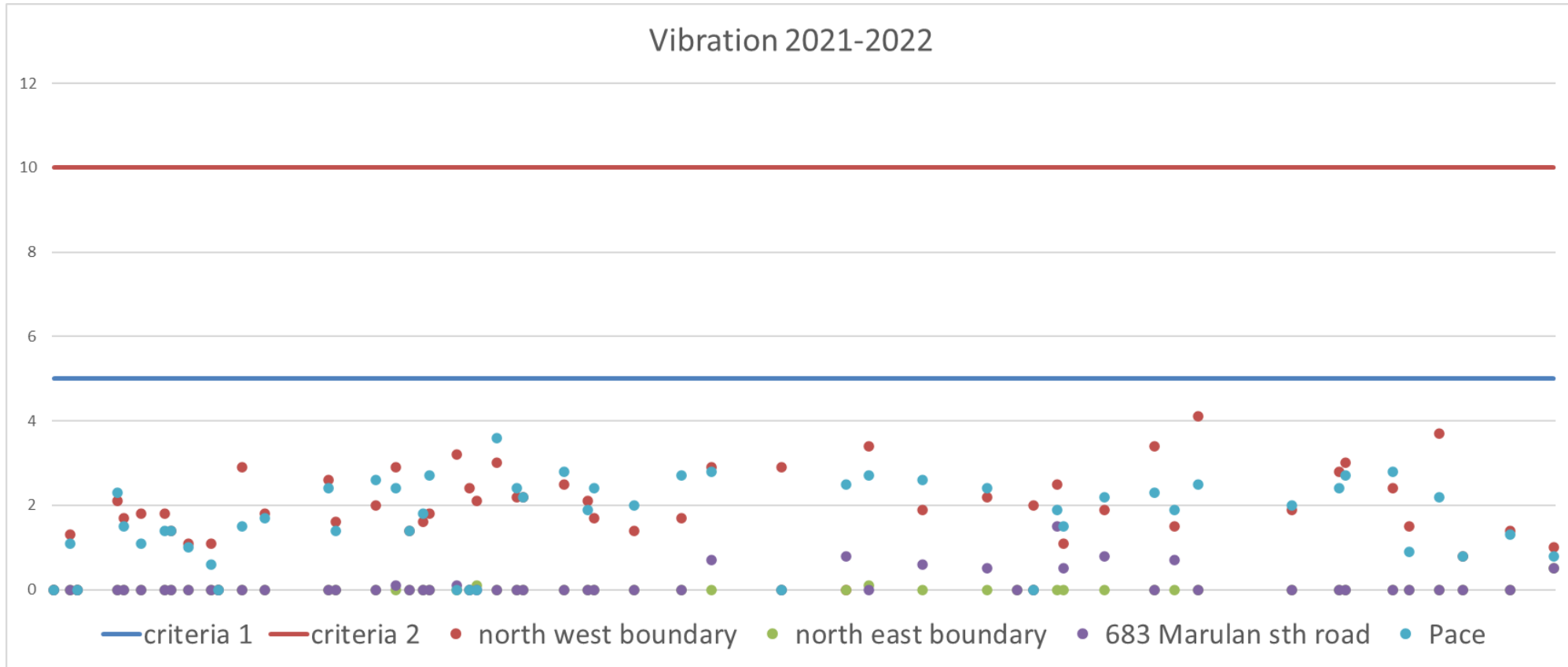
# Blasting - Overpressure



In Compliance



# Blasting – ground Vibration



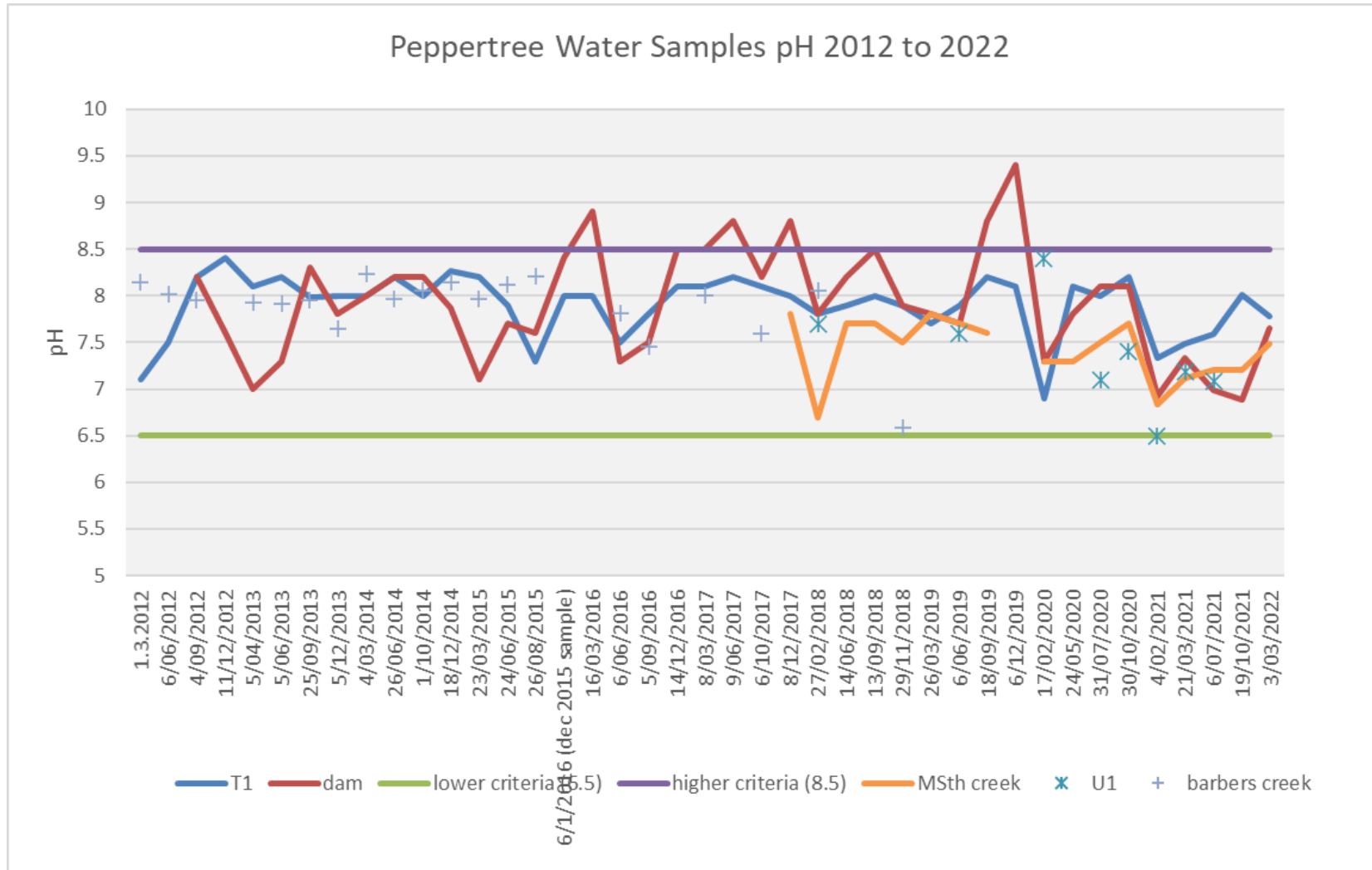
In Compliance

# Surface Water

Quarterly monitoring round undertaken in January – March 2022 with sampling on Thursday 3rd March 2022

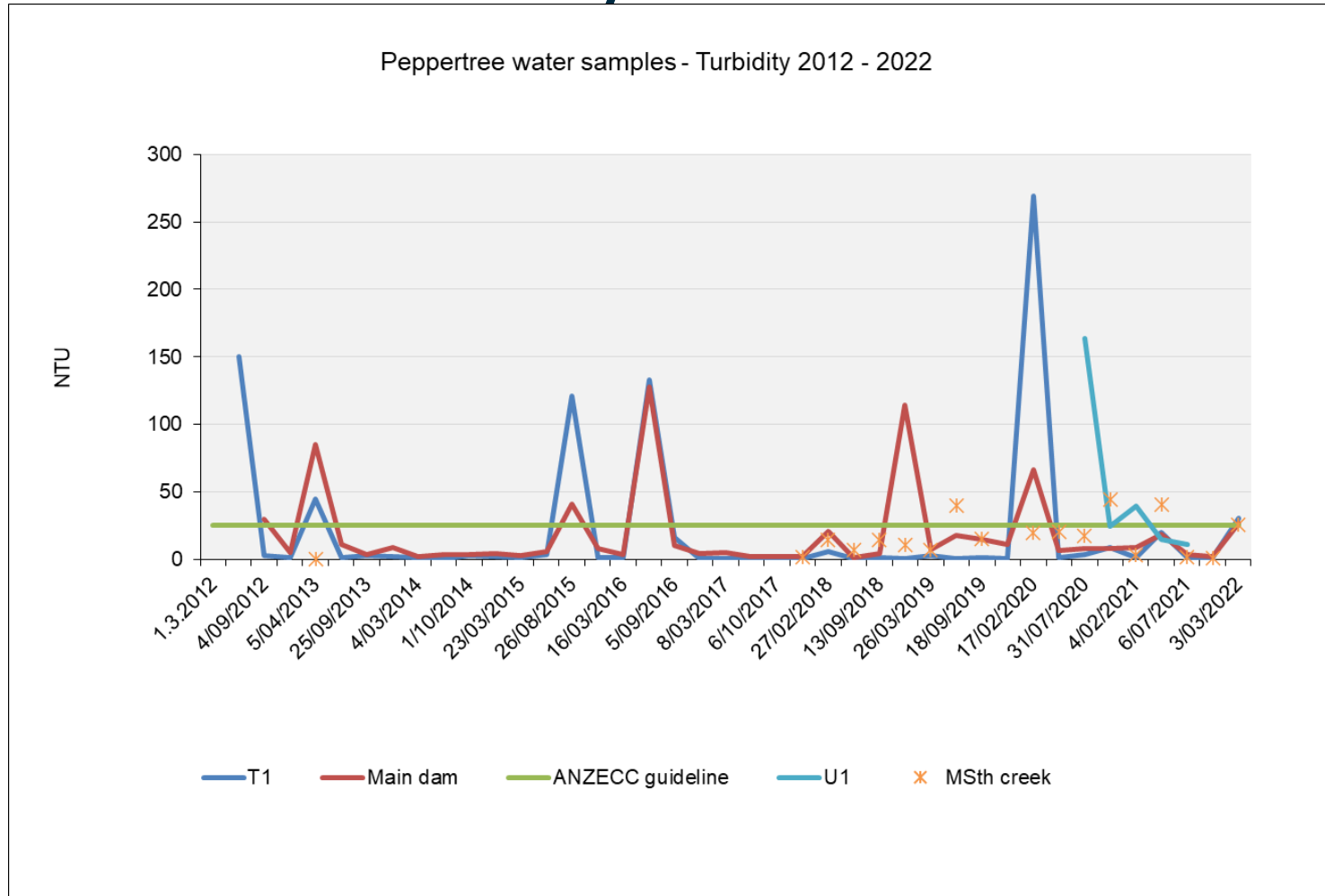
No issues with water supply or quality over the last 3 months

# Surface water - pH



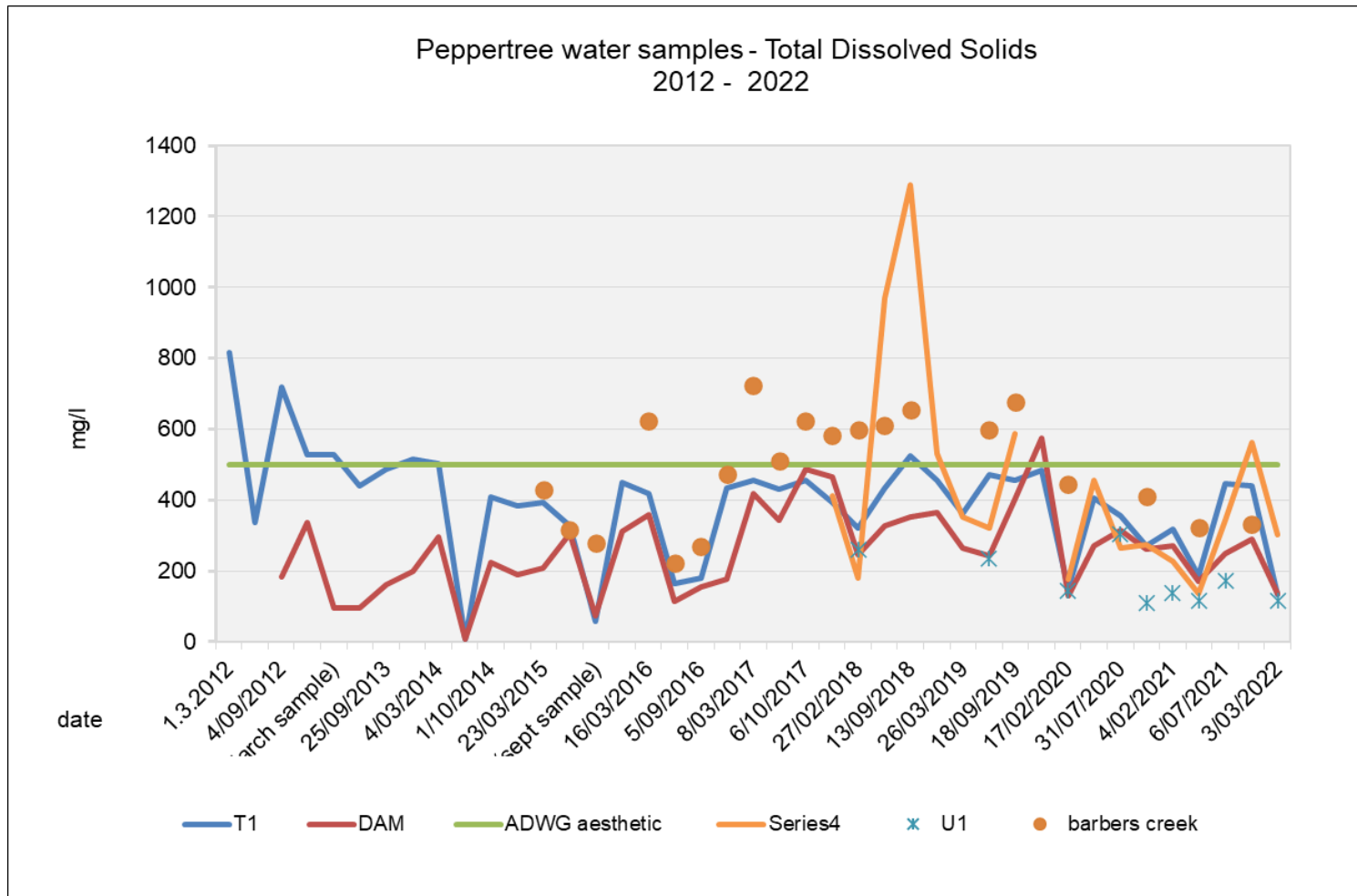
Within guideline for March samples

# Surface water - Turbidity



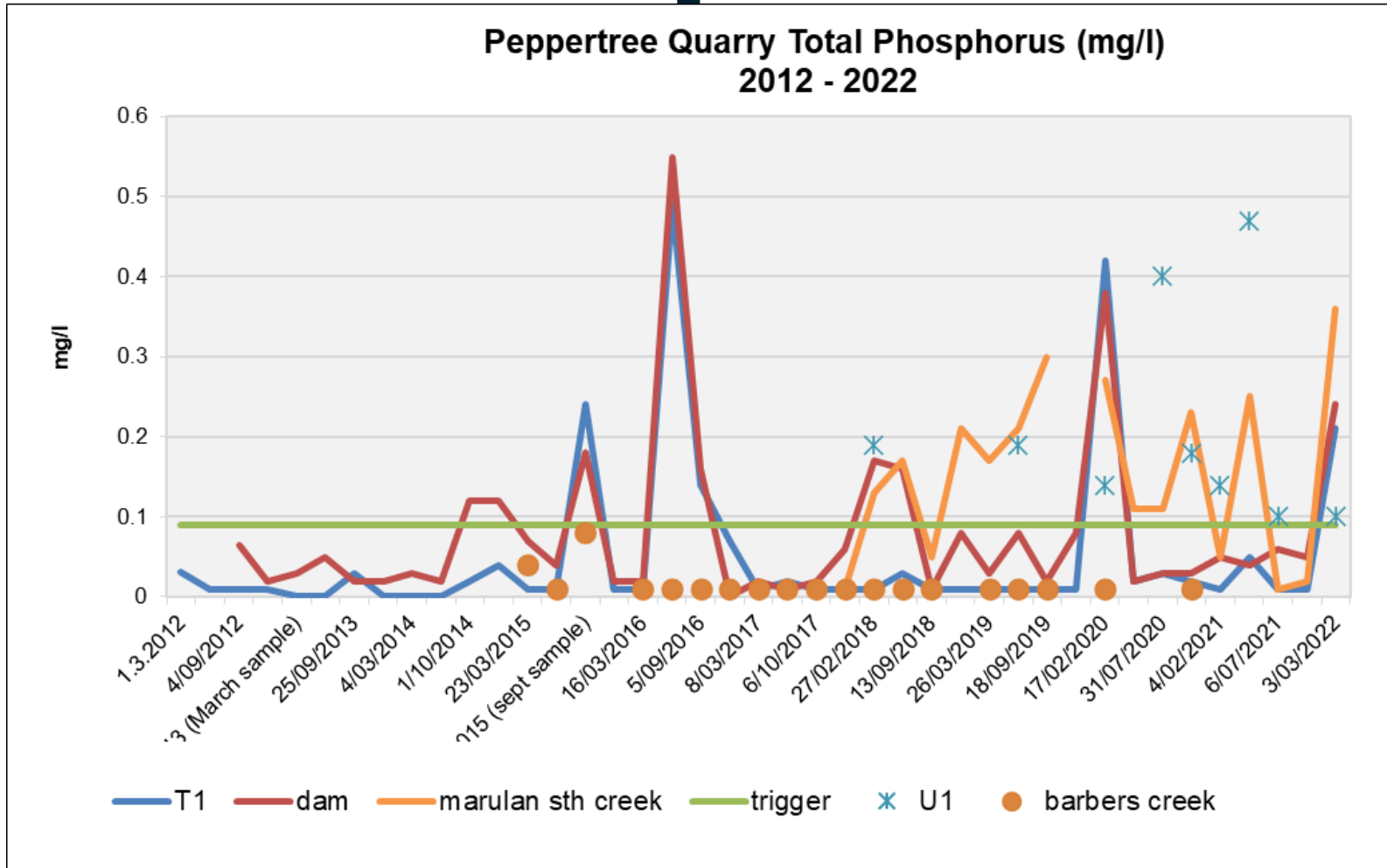
Slightly above guideline for March samples

# Surface water – Total dissolved solids



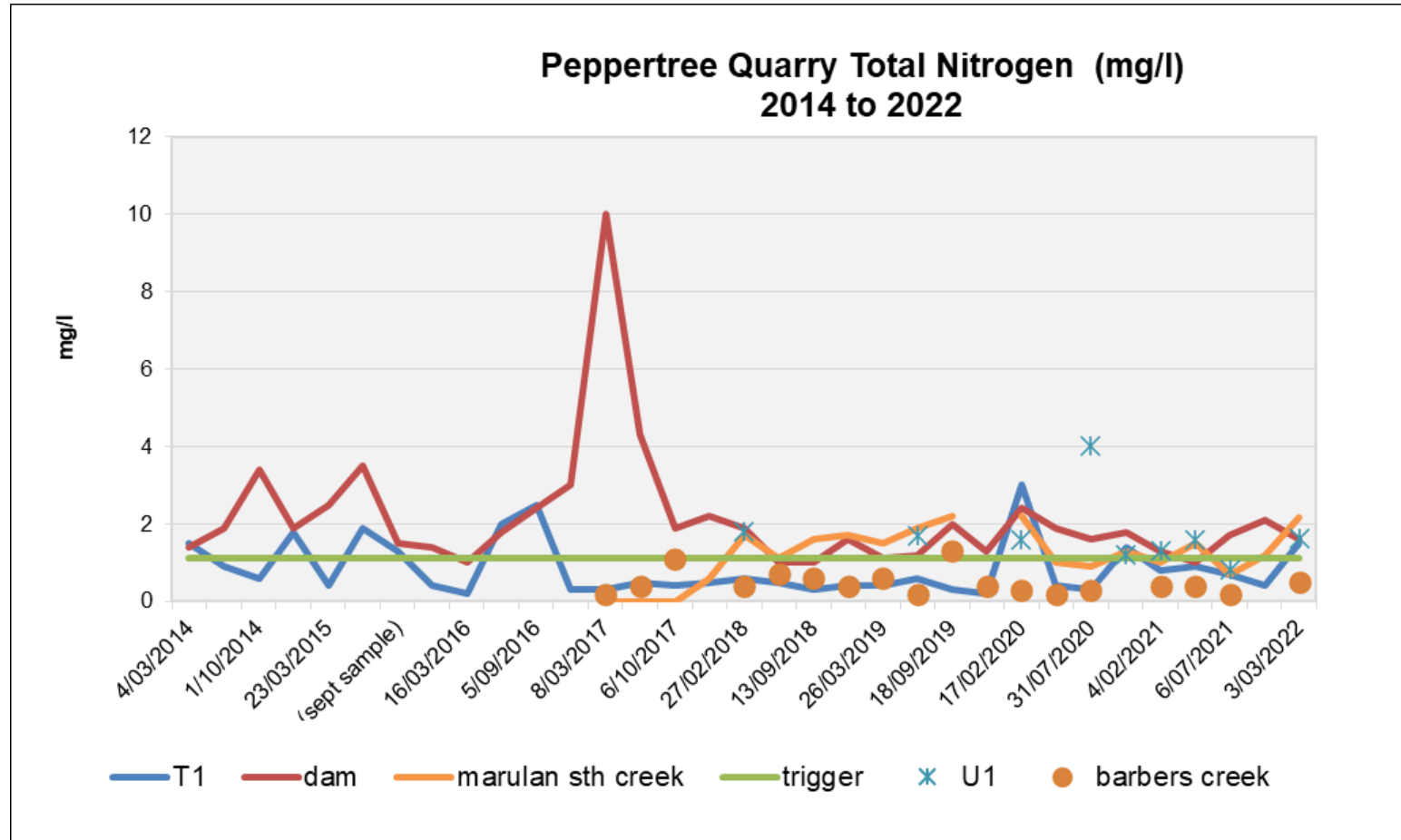
Below guideline for March samples

# Surface water – total Phosphorus



Above guideline for March samples

# Surface water - Total Nitrogen



Above guideline for March samples

# Environmental Flow

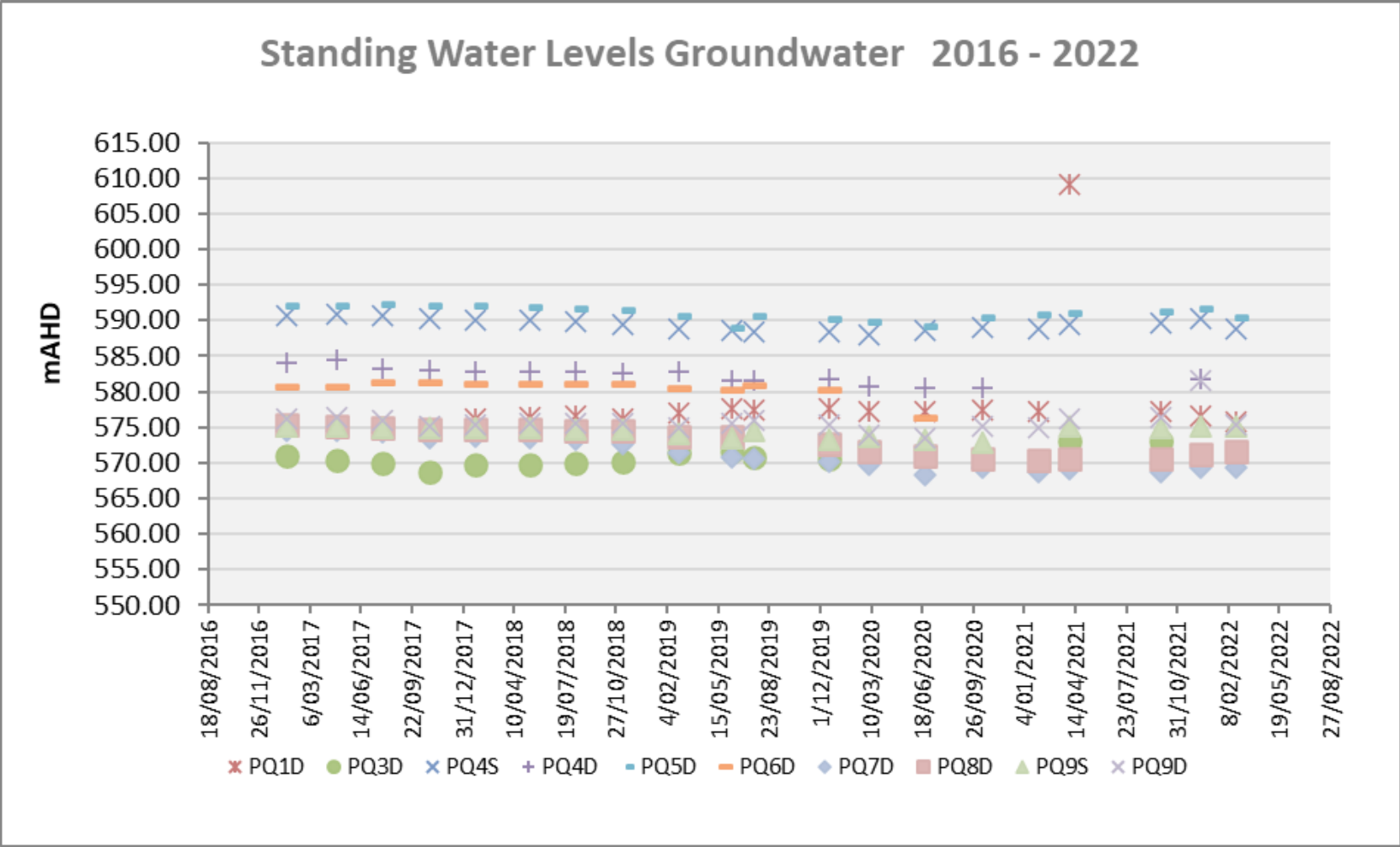
year	total in flow	10%	total out flow	in compliance	comment
Feb-2021	21	2.1	44.59	yes	
Mar-2021	38	3.8	833	yes	Rainfall - possible overflow of the V notch weir
Apr-2021	2	0.2	8.47	yes	
May-2021	30.5	3	433	yes	Rainfall - possible overflow of the V notch weir
Jun-2021	9	0.9	6.5	yes	
Jul-2021	8	0.8	8.32	yes	
Aug-2021	18	1.8	166.28	yes	Rainfall - possible overflow of the V notch weir
Sept-2021	5	0.5	7.3	yes	
Oct-2021	0.5	0.05	3.07	yes	
Nov-2021	42.6	4.26	936.71	yes	Rainfall - possible overflow of the V notch weir
Dec-2021	19.9	1.99	373.79	yes	Rainfall - possible overflow of the V notch weir
Jan-2022	19.4	1.94	239.79	yes	Rainfall - possible overflow of the V notch weir
Feb-2022	10.8	1.08	4.35	yes	



# Ground water

- > Monitoring conducted in December 2021 and March 2022.
- > Results show no changes to the groundwater
- > Review of the existing wells was undertaken and advice now provided on replacement wells and locations

# Ground water – water levels



# Heritage

Collation of Artefacts has been postponed for a short period due to the availability of the archaeologist

Planning is progressing to Return some Artefacts to country by June 2022.

Reconciliation week community workshops being developed

Scar tree relocation being planned, currently undercover near the farm house. Scar tree conservation consultant being contacted.

Scar trees have been fenced

# Ecology

Three year plan developed for ongoing rehabilitation and maintenance

Rapid Visual assessment conducted Thursday 21<sup>st</sup> October. Identified some areas of work for erosion control and pest management (weed and feral animals)

Monitoring plan has been revised

Implementation plan has been drafted and is being reviewed

Weed management plan has been drafted and being reviewed

More feral goats have been removed, happening on a as needs basis.

# 07

## Stakeholder Engagement



Marulan Christmas fair- 23rd December. We held a guessing competition and handed out chocolate rocks to the local children

Goulburn Community Bike ride postponed due to COVID

Tallong Apple day in May- planning happening

National Reconciliation Week community workshops – May



# 08

Operations  
Next 3 months



## **Safety**

Focus on the "life saving commitments"

## **Overburden**

Pre works to continue. Aim to start moving overburden in the coming weeks. U turn bay works commenced

## **Pit Update**

New Conveyor installed down the north ramp into the RL525 area

## **Processing (STQ)**

Continue to supply aggregates and sand to Sydney metro

## **People**

A number of plant operator positions to be filled, currently interviewing for maintenance manager position.



# 09

## General Business



## **Marulan South State Significant Development**

conditions of consent have been issued

It has been agreed that a joint CCC will be established

Process is to advise and seek DPIE approval

The Chair to seek nominations for representatives

The Chair to advise and seek approval from DPIE on the selection of representatives

Aim for this to be in place June 2022

## Other

Next meeting

June 2022



Thanks for your participation