

The background of the slide is a photograph of a city skyline at dusk or dawn. The sky is a pale blue, and the buildings are silhouetted against it. A prominent feature is a tall, cylindrical tower with a glowing top section, likely the CN Tower in Toronto. Other skyscrapers of various architectural styles are visible, some with lights on. In the foreground, there's a dark, overhanging structure, possibly a balcony or part of a building, which is partially obscured by a dark teal overlay containing text.

Community Consultative Committee

Peppertree Quarry & Marulan  
South Limestone

November 2022

# AGENDA

1. Welcome and introductions
2. Confirmation of minutes and actions
3. Business arising
4. Correspondence
5. Operations over the last 3 months
6. Environmental performance
  - a. Incidents
  - b. Complaints
  - c. Air
  - d. Noise
  - e. Blast
  - f. Water – surface and ground
  - g. Heritage
  - h. Ecology
7. Stakeholder Engagement
7. Stakeholder Engagement
8. Plans for the next 3 months
9. General Business
10. Next meetings - January 2023



# 01

## Welcome and apologies





# 02

## Confirmation of minutes



# 03

## Business arising

- Circulate link for 2021 PTQ AEMR



# 04

Correspondence

Jul 2022 – Nov 2022





# Peppertree Quarry

## Department of Planning and Environment

Submission of Rehab Bond calculation

## EPA

Nil

## Resource Regulator

Lifting equipment

Explosives

## Goulburn Mulwaree Council

Council visit

## Geoff Clark

weather data reviews – weather station monthly reviews

# Marulan South Limestone

## Department of Planning and Environment

- Assessing Environmental Management Plans (EMP's)

## EPA

- Environmental Protection Licence will be amended upon approval of EMP's

## Resource Regulator

- Mine and dump stages for Rehabilitation Management Plan (RMP) have been drafted. Waiting on final approval of mining lease before due date for submission of RMP at end of November

## Goulburn Mulwaree Council

- Council Visit
- Work commenced on designs of upgrade for Marulan South Road



# 05

Operations  
Past 3 months



## **Peppertree Quarry**

### **Safety**

LTI/MTI

### **Overburden**

Overburden is being stripped focusing in a Southerly direction circa 1.5 million m<sup>3</sup> has been moved.

### **Pit Update**

Contract crushing, conveyor re-alignment (CV110)

### **Processing (STQ)**

Some rail disruptions due to rail contractor industrial action. Temporary approval for up to 60 laden trucks daily. (ceased 28th October)

Rain has caused some aggregate and road base production issues.

### **People**

STQ supervisor has been filled, leading hand position, pit supervisor, temporary roles in both STQ and Primary



## Marulan South Limestone

### Safety

Focus on training, including safety focus seminars and workshops, safety supervision and specific hazard training eg. electrical awareness and train shunting.

### Overburden

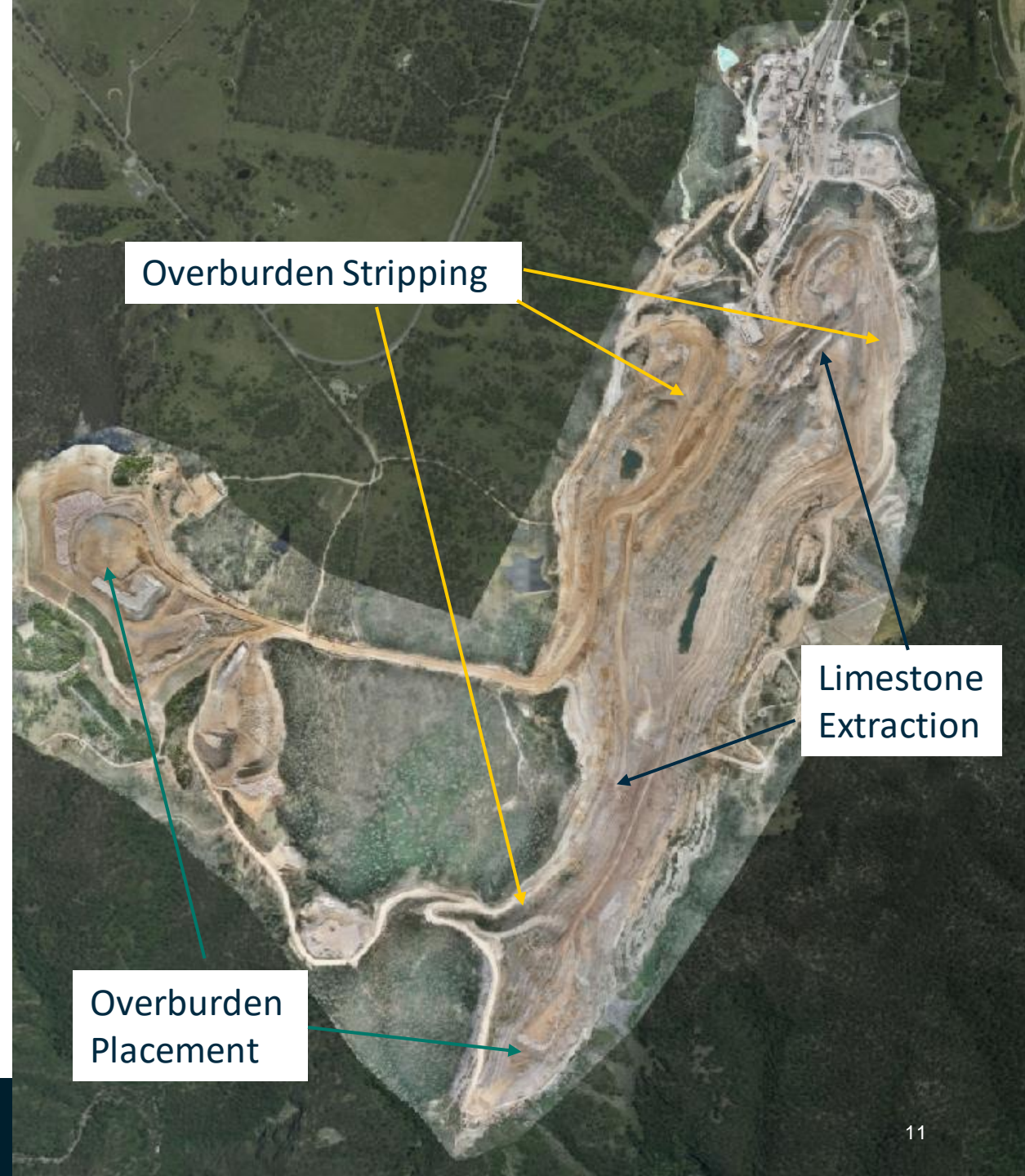
Overburden Stripping has been progressing at a steady 375,000t/month and will continue at this rate for the foreseeable future.

### Limestone Extraction

Extracting at a rate of 240,000t/month. Berrima kiln has run smoothly.

### People

Celebrated milestones at the service awards. Also celebrated the retirement of Marty Saville after 30 years.



# 06

## Environmental Performance





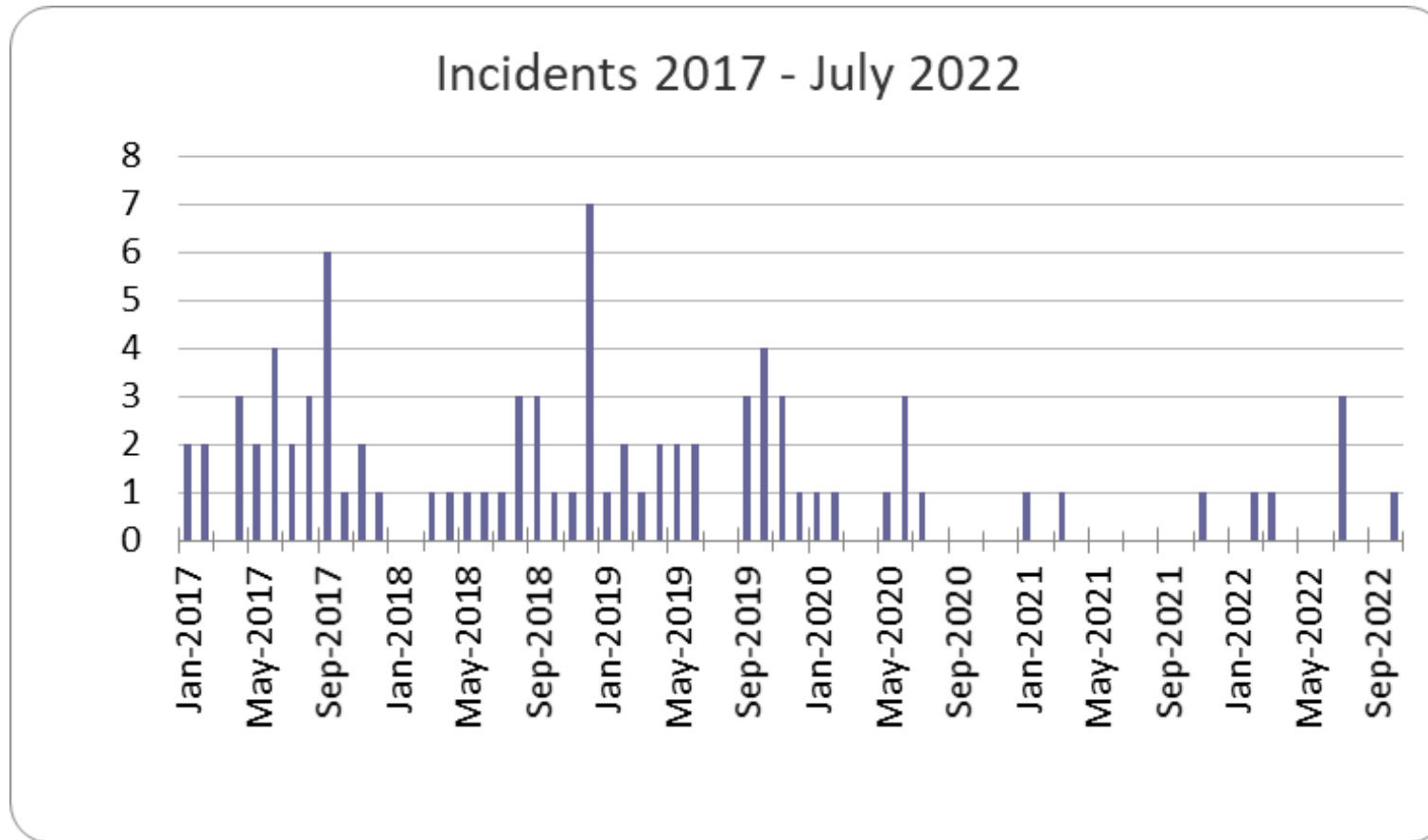
# 06.1

Environmental  
Performance

Peppertree Quarry

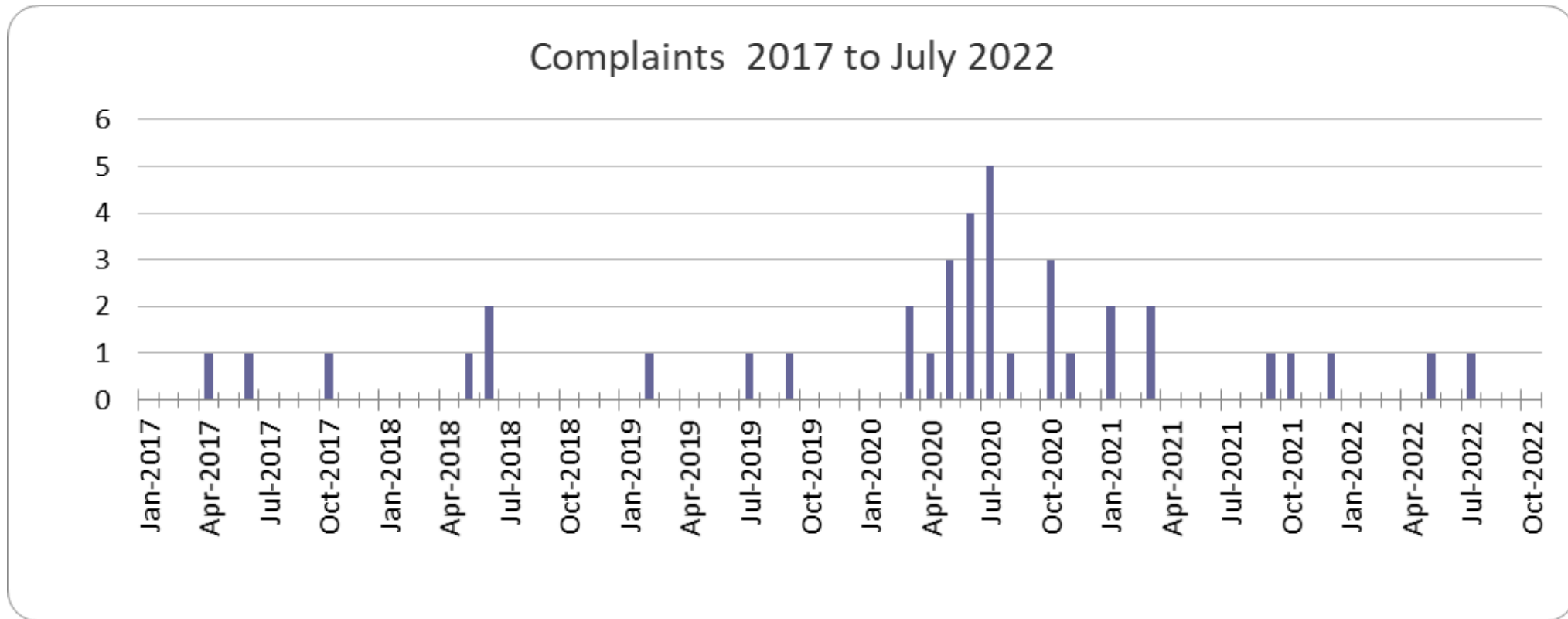


# Environmental Incidents Jan 2017 to Nov 2022



> Aug- nil Sep- nil Oct- nil (1 x localised oil spill)

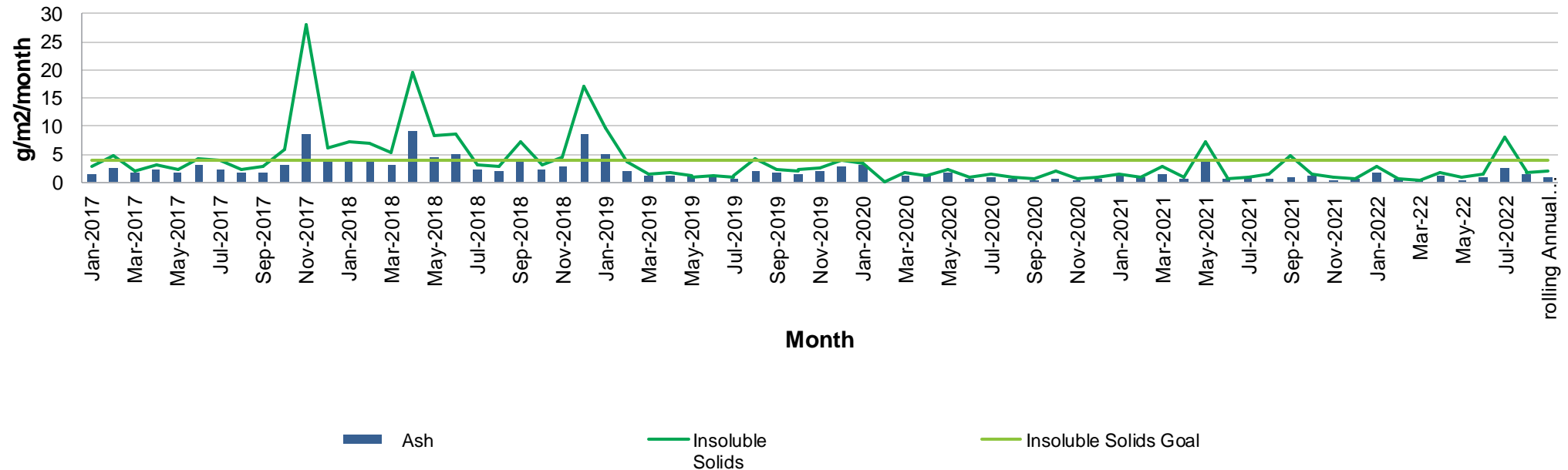
# Environmental Complaints Jan 2017 to Nov 2022



> Aug- nil Sept- nil Oct- nil

# Air – Dust deposition Gauge D1

Peppertree Quarry Deposited Dust 2017 - 2022  
Onsite (NW boundary)



**Annual Average goal of 4gm<sup>2</sup>/month**

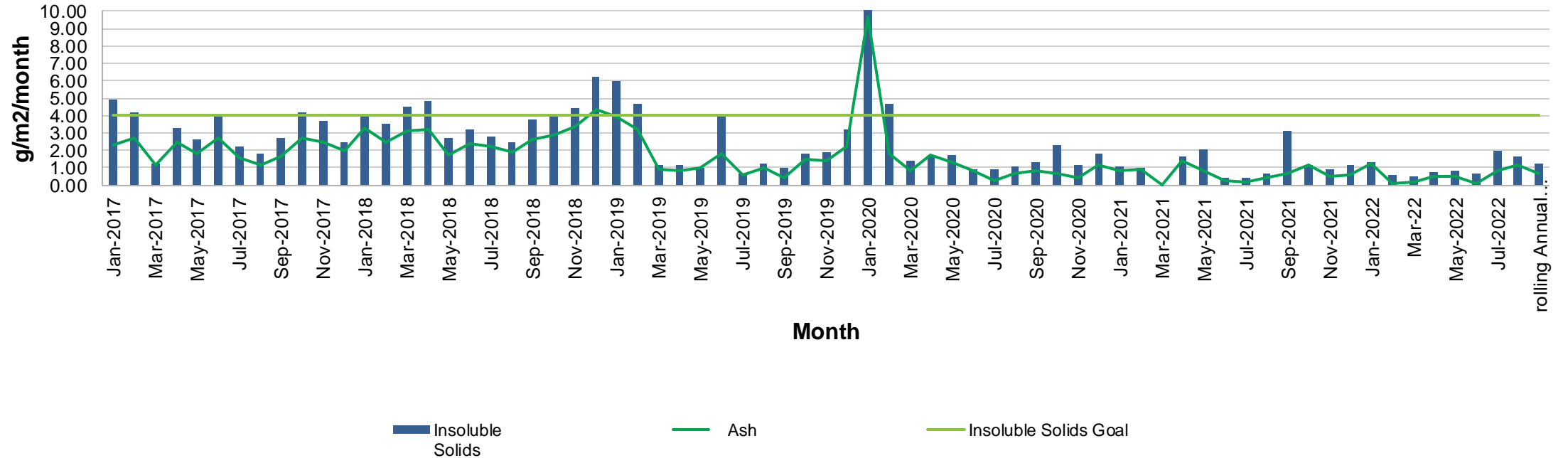
In compliance

Annual average below goal at the boundary



# Air – Dust Deposition Gauge D2

Peppertree Quarry Deposited Dust 2017 - 2022  
683 Marulan South Road



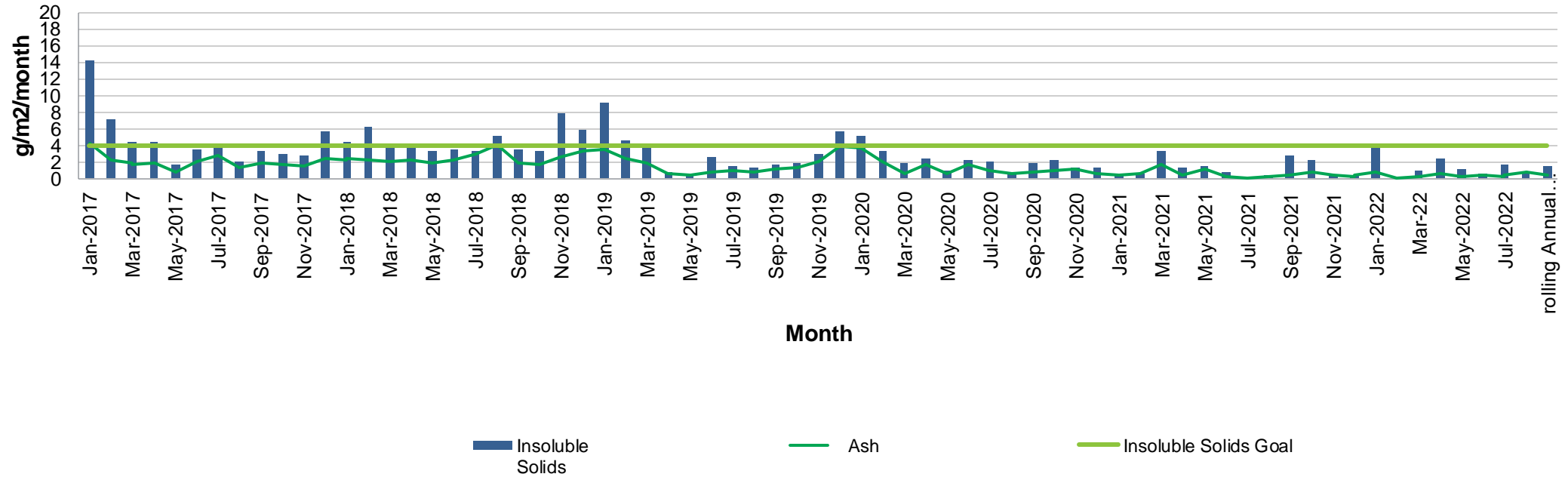
**Annual Average goal of 4gm2/month**

In compliance

Annual average below goal at the boundary

# Air – Dust Deposition gauge D3

Peppertree Quarry Deposited Dust 2017 - 2022  
432 Long Point Road, Tallong



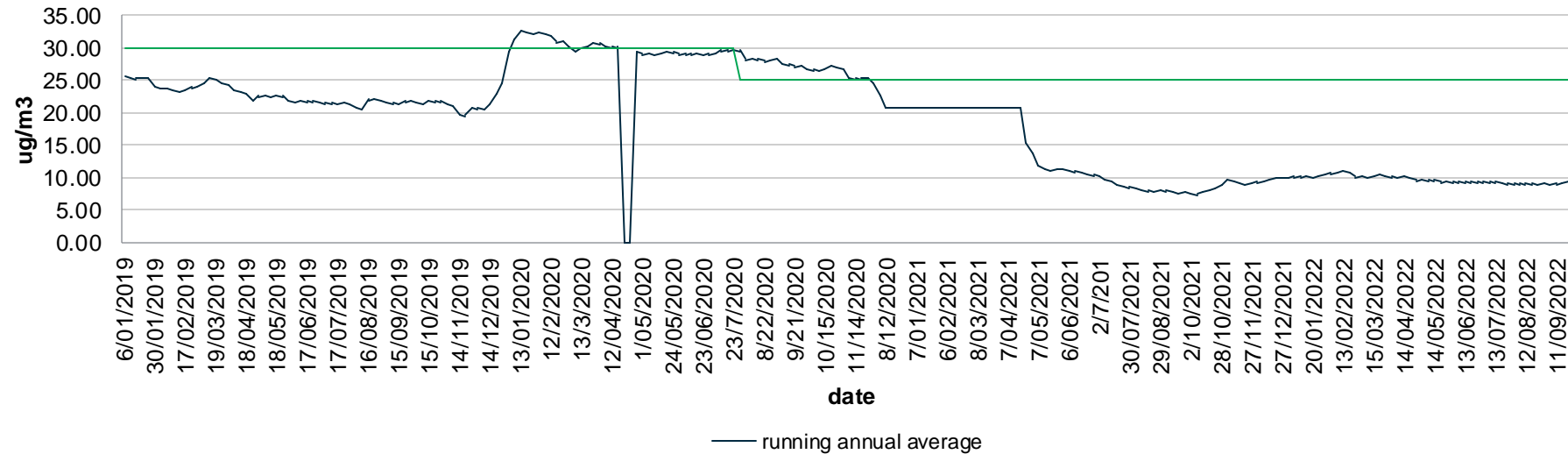
**Annual Average goal of 4gm<sup>2</sup>/month**

In compliance

Annual average below goal at the boundary

# Air – PM10 annual average

PM10 Annual average trend 2019 - 2022



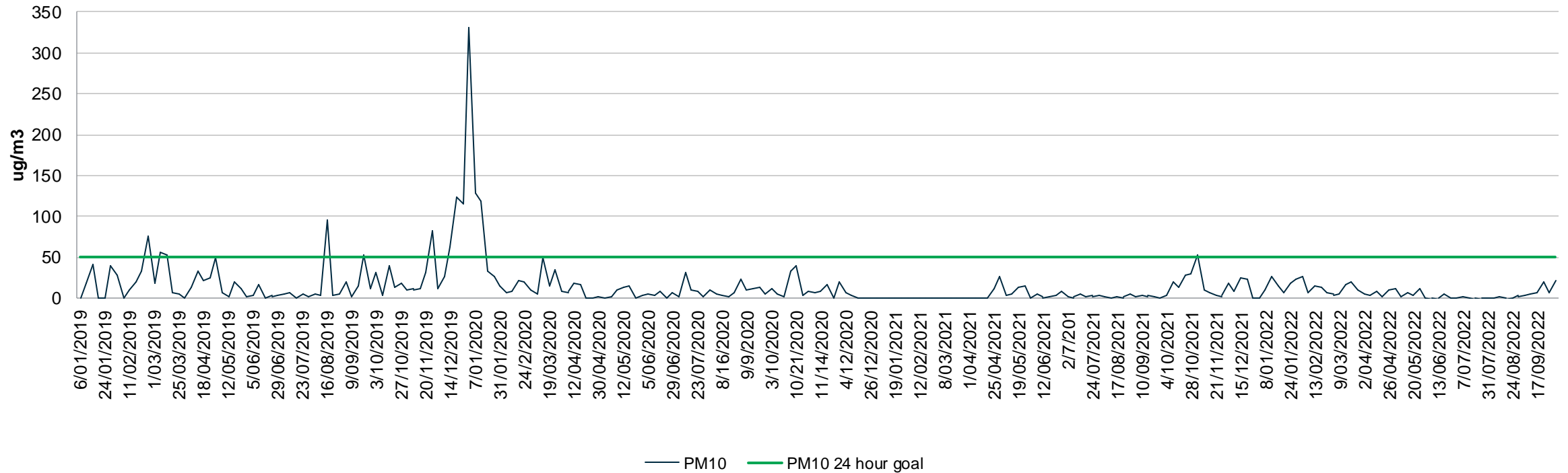
## Annual Average goal of 25ug/m3

In compliance

Annual average below goal at the boundary

# Air – PM10 24 Hour performance

Peppertree Quarry PM10 24 hour performance 2019 - 2022



## 24 hour goal of 50ug/m3

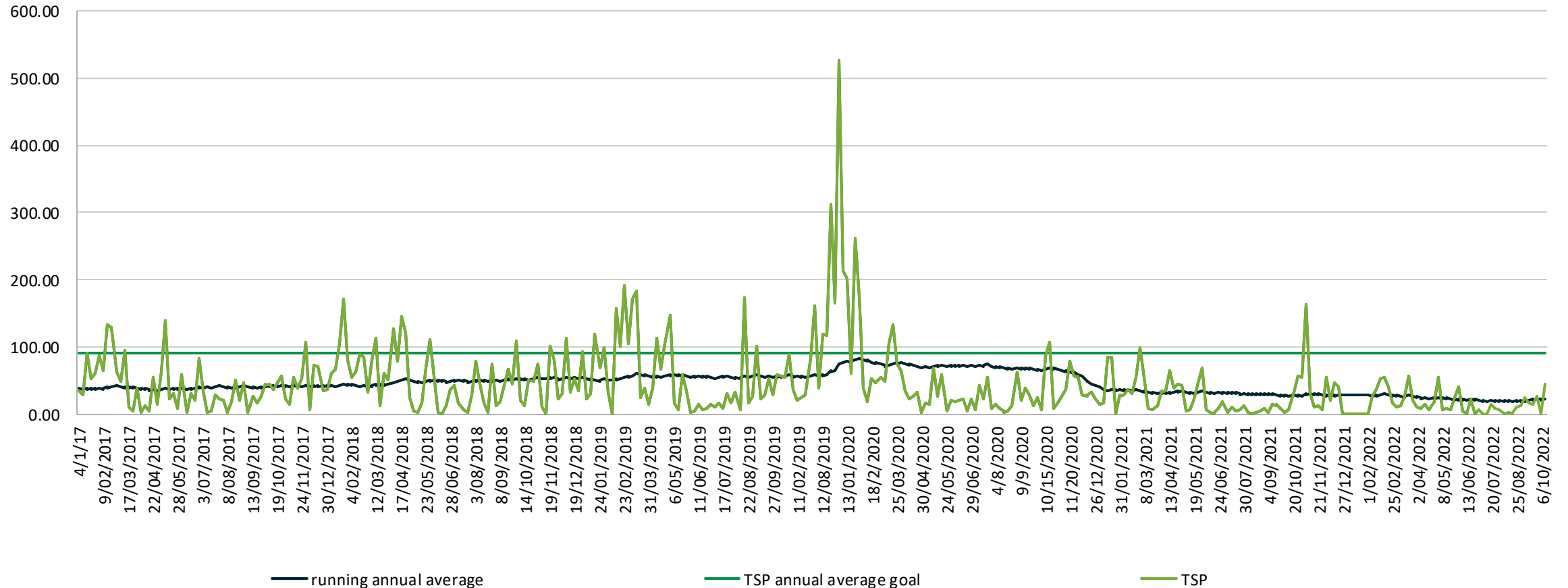
In compliance

Annual average below goal at the boundary



# Air – Total Suspended Particulates

TSP Annual average trend 2017 - 2022



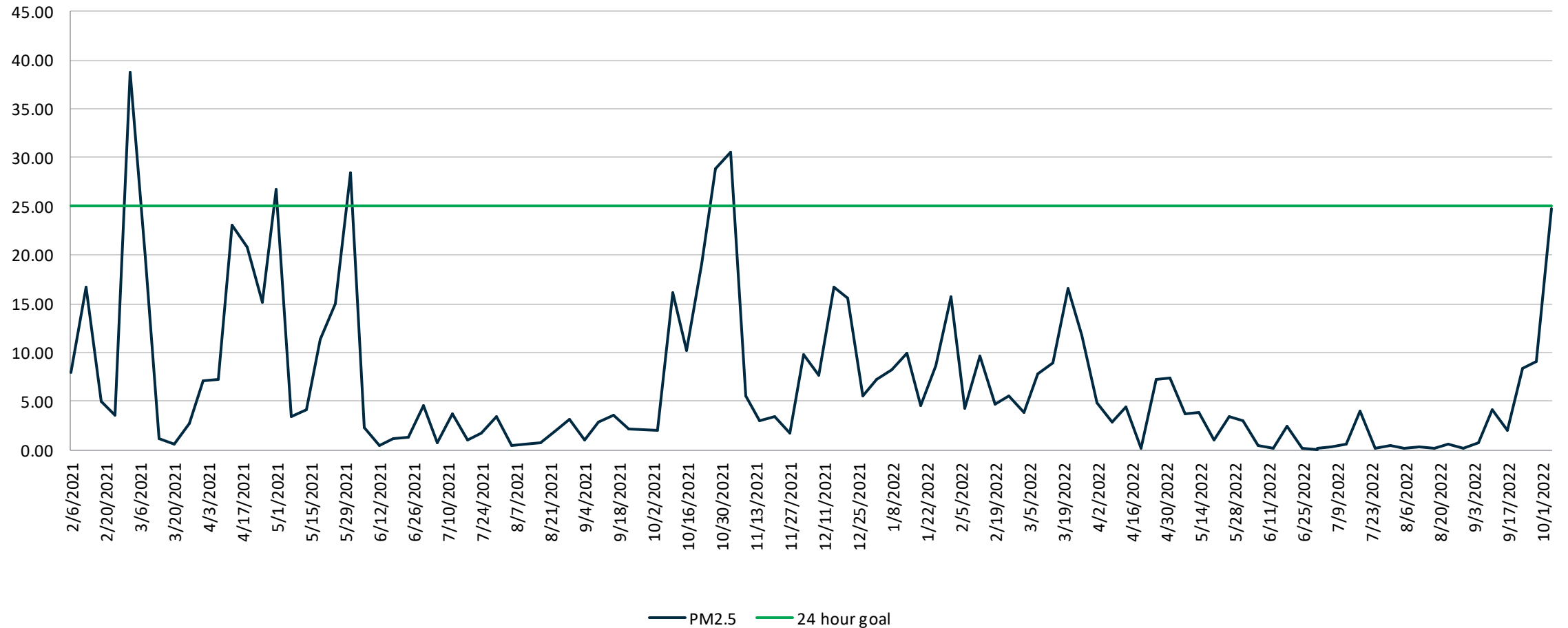
**Annual Average goal of 90 $\mu\text{g}/\text{m}^3$**

In compliance

Annual average below goal at the boundary

# Air – PM2.5

## PM2.5 24 hour 2021-2022



In compliance for the past 3 months.

# Noise – quarterly monitoring

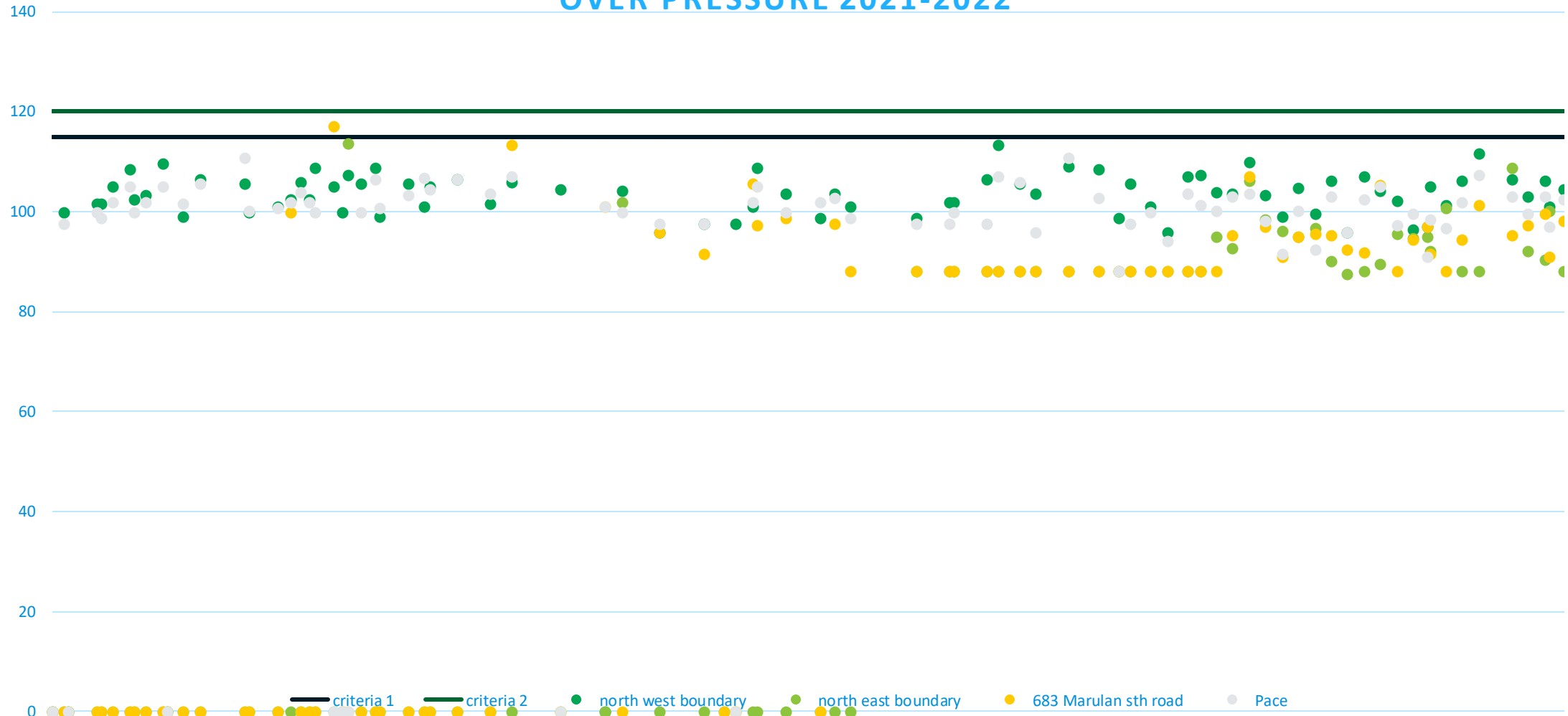
Monitoring was undertaken over 29<sup>th</sup>, 30<sup>th</sup>, and 1<sup>st</sup> June/July 2022, 30<sup>th</sup>, 31<sup>st</sup> and 1<sup>st</sup> August/September

Results for the June/July and August/September round are in compliance.

Next round due in December.

# Blasting - Overpressure

OVER PRESSURE 2021-2022

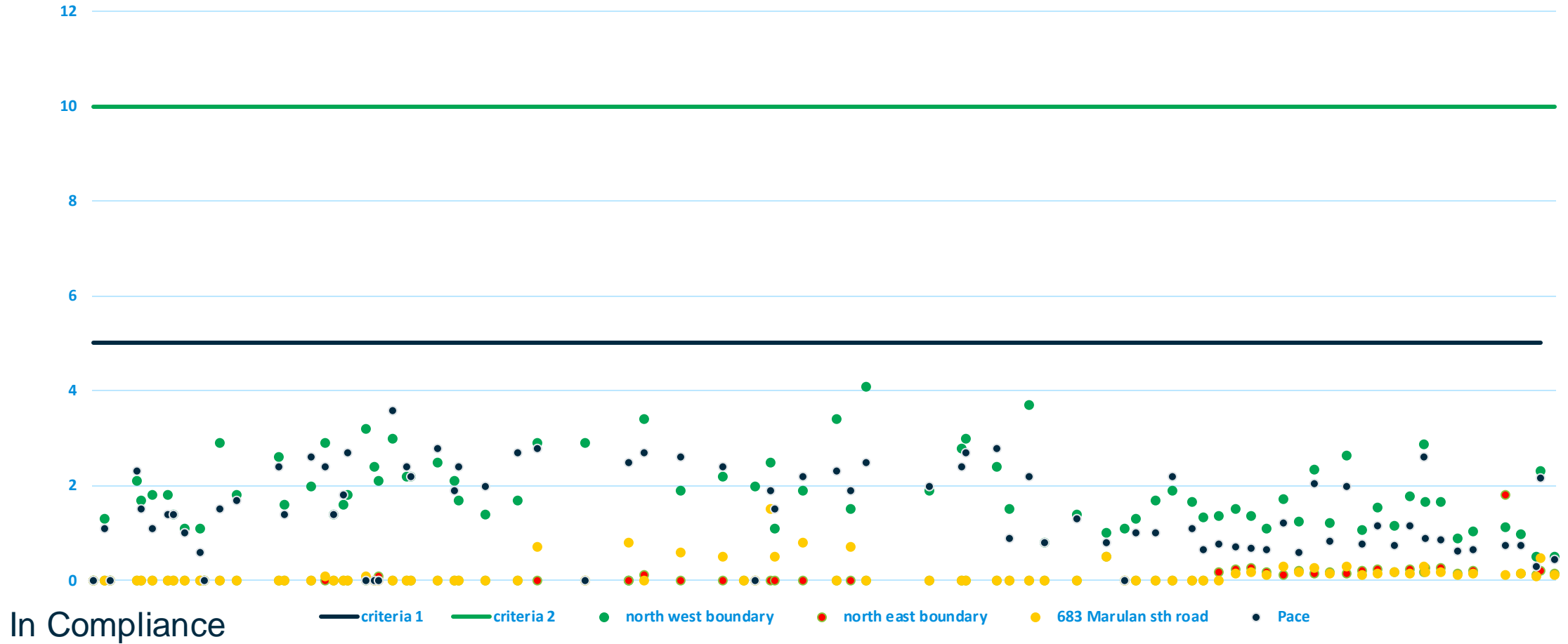


In Compliance



# Blasting – ground Vibration

Vibration 2021-2022

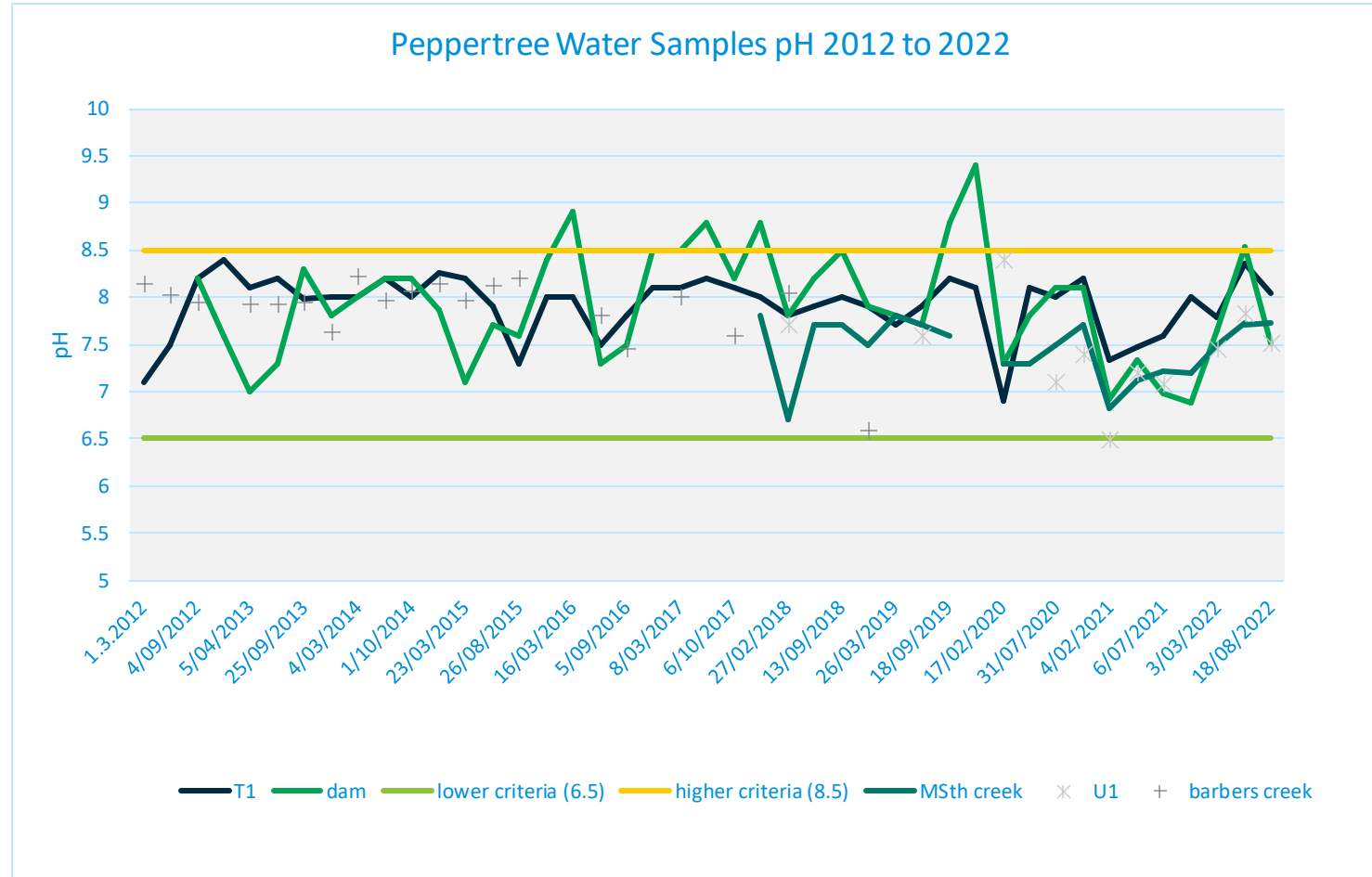


# Surface Water

Quarterly monitoring round undertaken in July – September 2022 with sampling on Thursday 18<sup>th</sup> August 2022

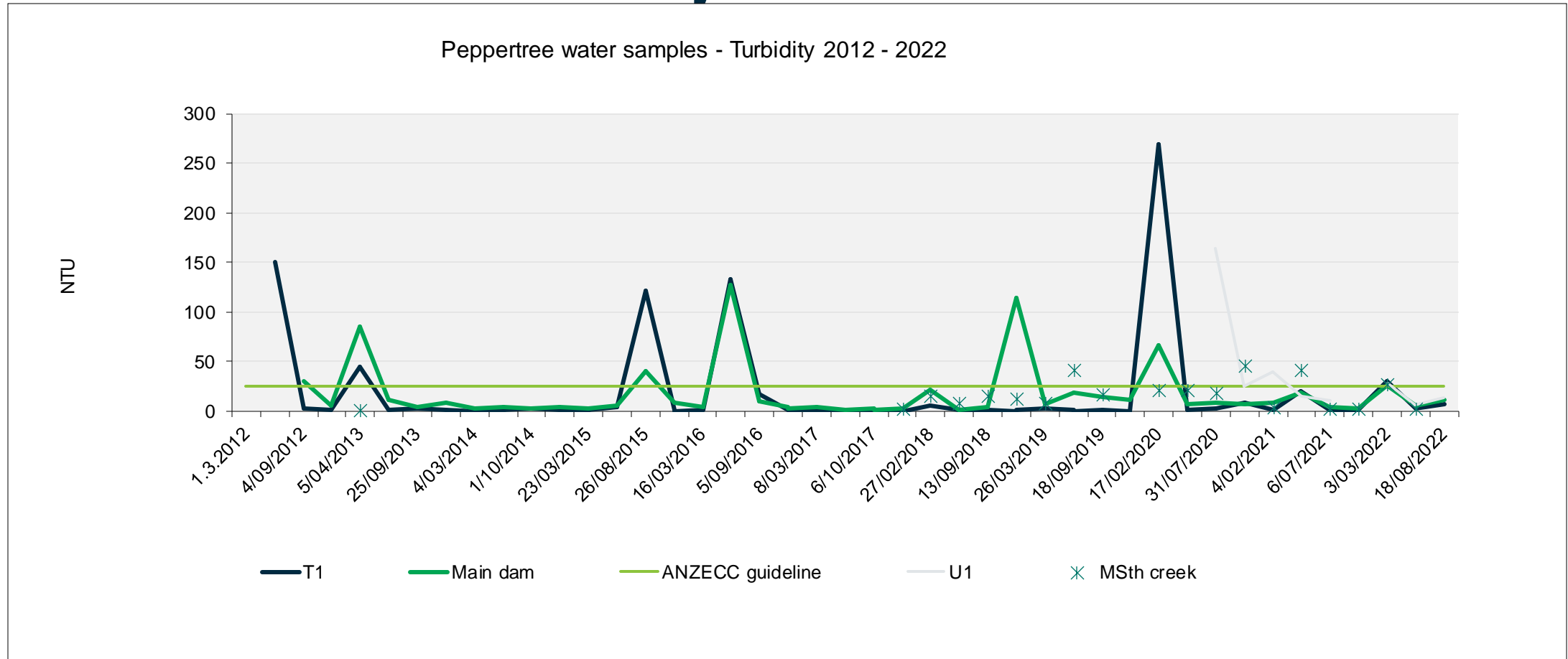
No issues with water supply or quality over the last 3 months

# Surface water - pH



Within guideline for August samples with the

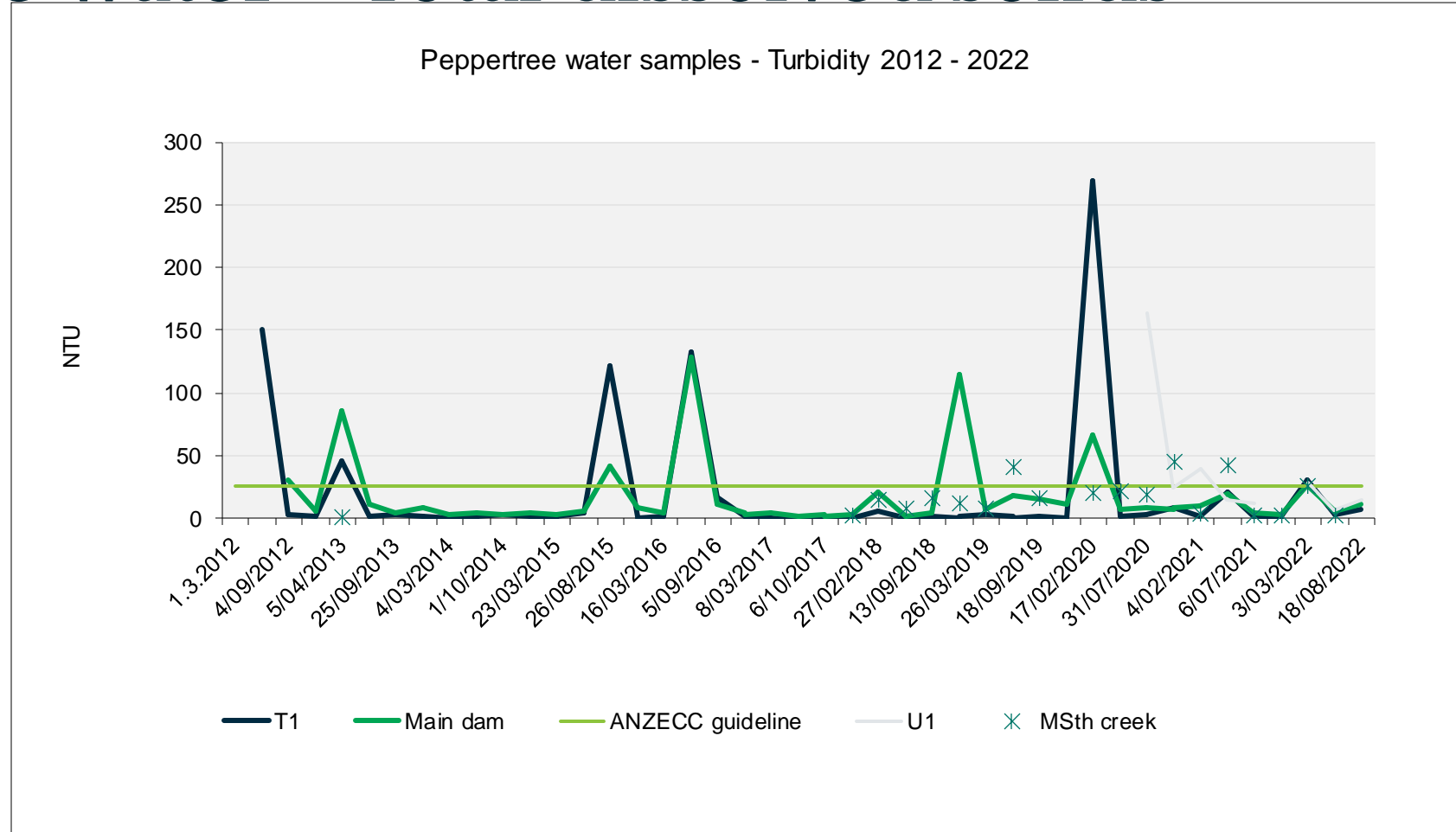
# Surface water - Turbidity



Below guideline for August samples

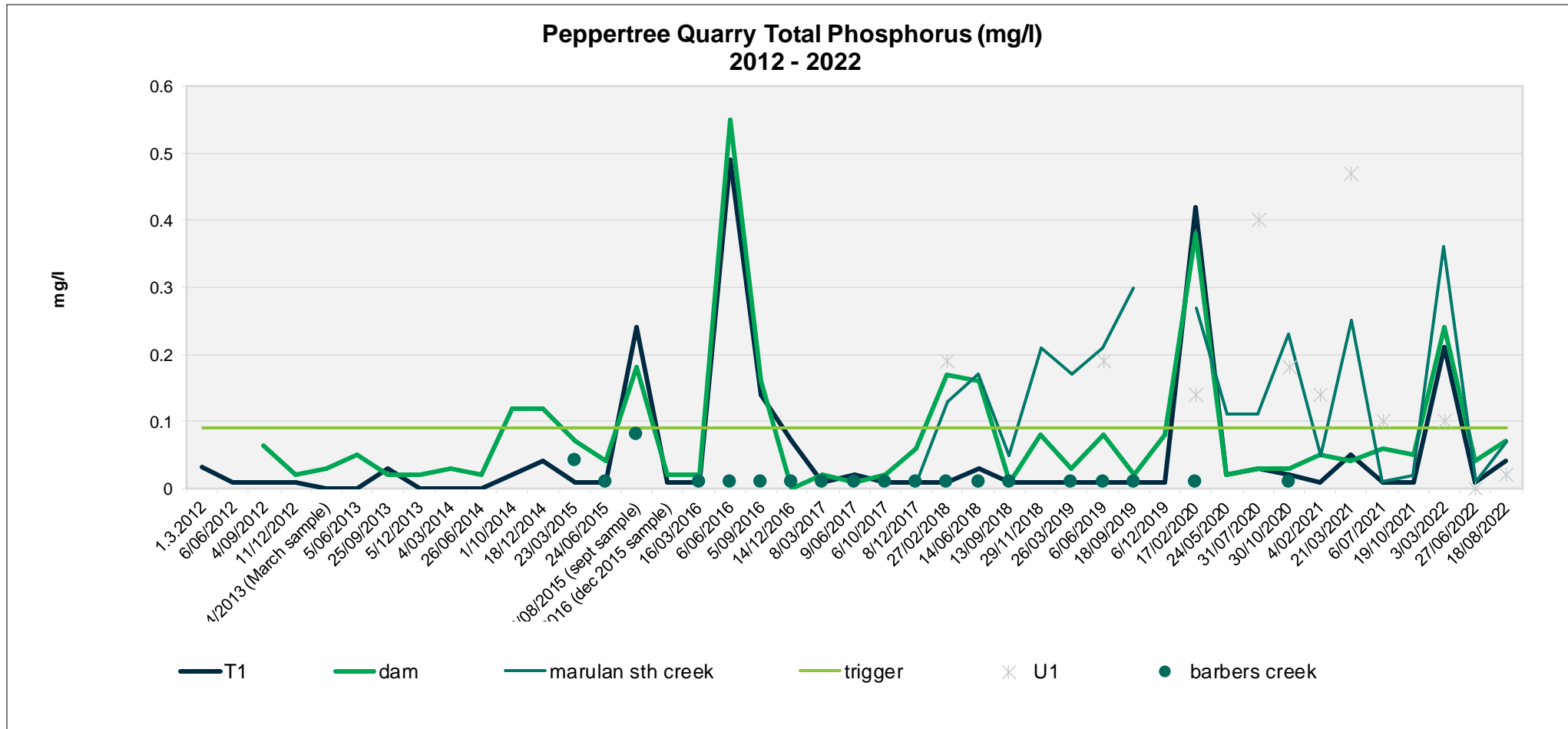


# Surface water – Total dissolved solids



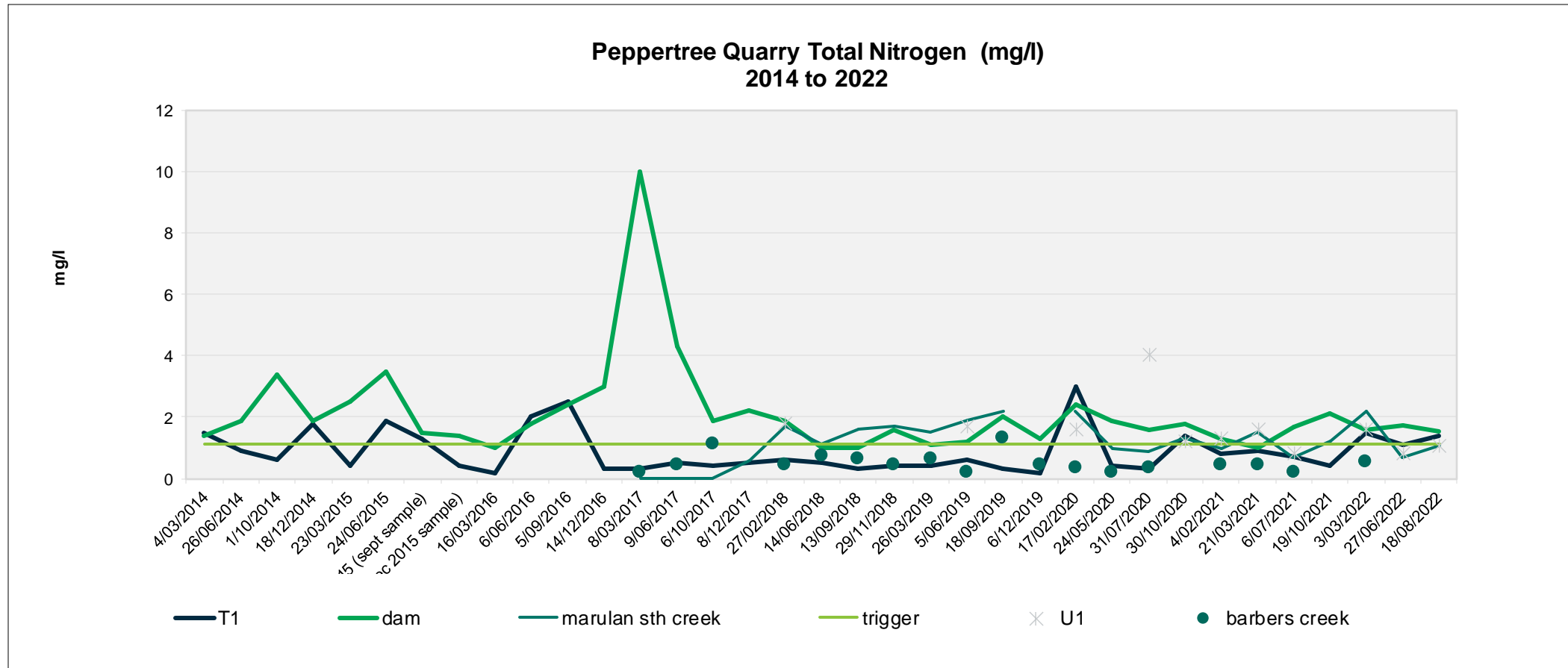
Below guideline for August samples

# Surface water – total Phosphorus



Below guideline for August samples

# Surface water - Total Nitrogen



Below guideline for August samples with exception of main dam and T1

# Environmental Flow

year	total in flow	10%	total out flow	in compliance	comment
Aug-2021	18	1.8	166.28	yes	Rainfall - possible overflow of the V notch weir
Sept-2021	5	0.5	7.3	yes	
Oct-2021	0.5	0.05	3.07	yes	
Nov-2021	42.6	4.26	936.71	yes	Rainfall - possible overflow of the V notch weir
Dec-2021	19.9	1.99	373.79	yes	Rainfall - possible overflow of the V notch weir
Jan-2022	19.4	1.94	239.79	yes	Rainfall - possible overflow of the V notch weir
Feb-2022	10.8	1.08	4.35	yes	
Mar-2022	54.2	5.42	1201.31	yes	Rainfall - possible overflow of the V notch weir
Apr-2022	30.3	3.03	656.16	yes	Rainfall - possible overflow of the V notch weir
May-2022	22.6	2.26	316.52	yes	Rainfall - possible overflow of the V notch weir
Jun-2022	3.1	0.31	6.6	yes	
Jul-2022	60.6	6.06	820.91	yes	Rainfall - possible overflow of the V notch weir
Aug-2022	34.2	3.42	341.8	yes	Rainfall - possible overflow of the V notch weir

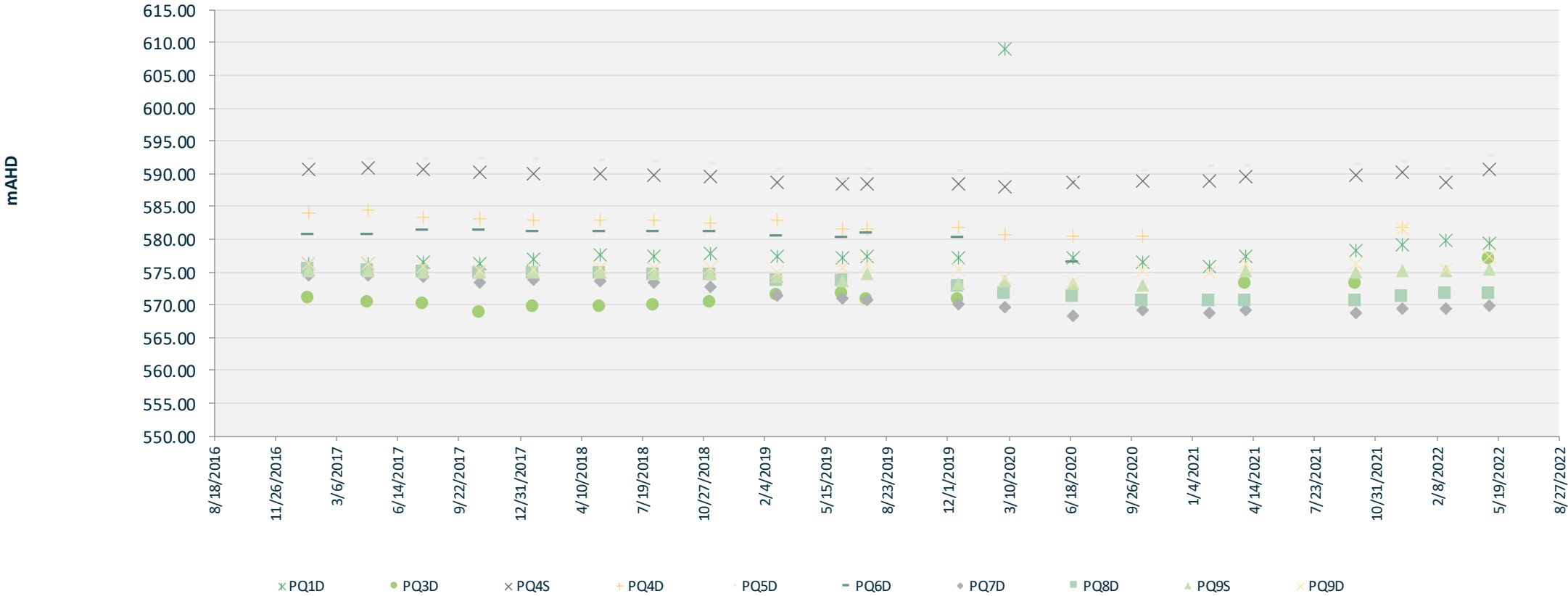
# Ground water

- > Monitoring conducted in May 2022 and September 2022.
- > May results all good, waiting on September results.
- > Results show no changes to the groundwater



# Ground water – water levels

Standing Water Levels Groundwater 2016 - 2022



# Heritage

Artefact analysis due to start in the coming weeks.

Approximately 65 000 artefacts have been returned to country in September

Reconciliation week activity being developed onsite, potential artwork in courtyard and artefact display for staff

Scar tree relocation being planned, currently undercover near the farm house. Scar tree conservation consultant has been engaged and advice provided



# Ecology

Three year plan developed for ongoing rehabilitation and maintenance

- 16.5ha of tree planting in spring
- 5km of direct seeding in spring
- Approx 80 000m<sup>2</sup> hydromulched

Rapid Visual Assessment + Weed assessment and ecological assessment to take place in November

Weed management undertaken in the last couple of months. Focus on black berry after Christmas.

Nest box inspection

Seed bombing

More feral goats have been removed, happening on a as needs basis.





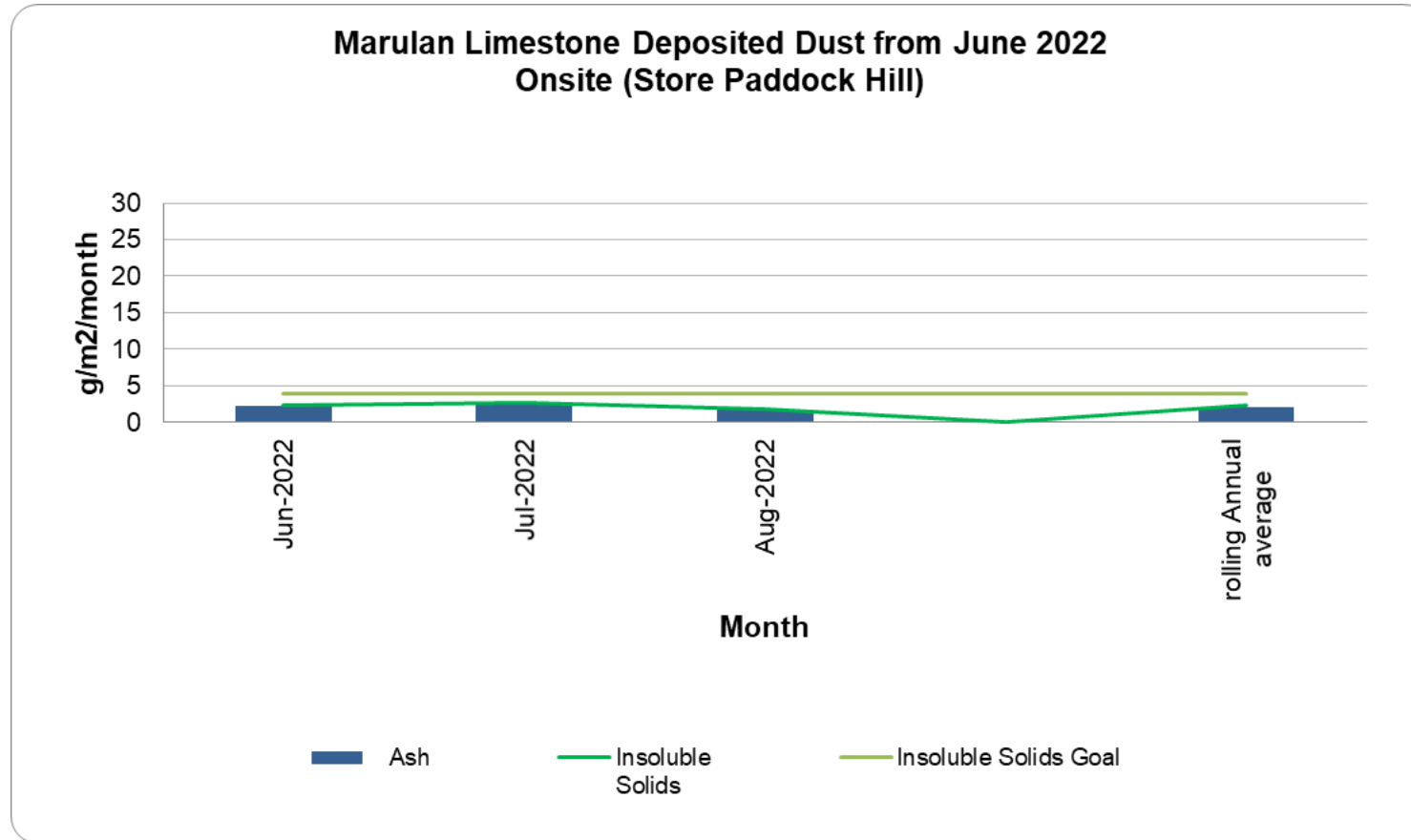
# 06.2

Environmental  
Performance

Marulan South Limestone



# Air – Dust deposition Site 1

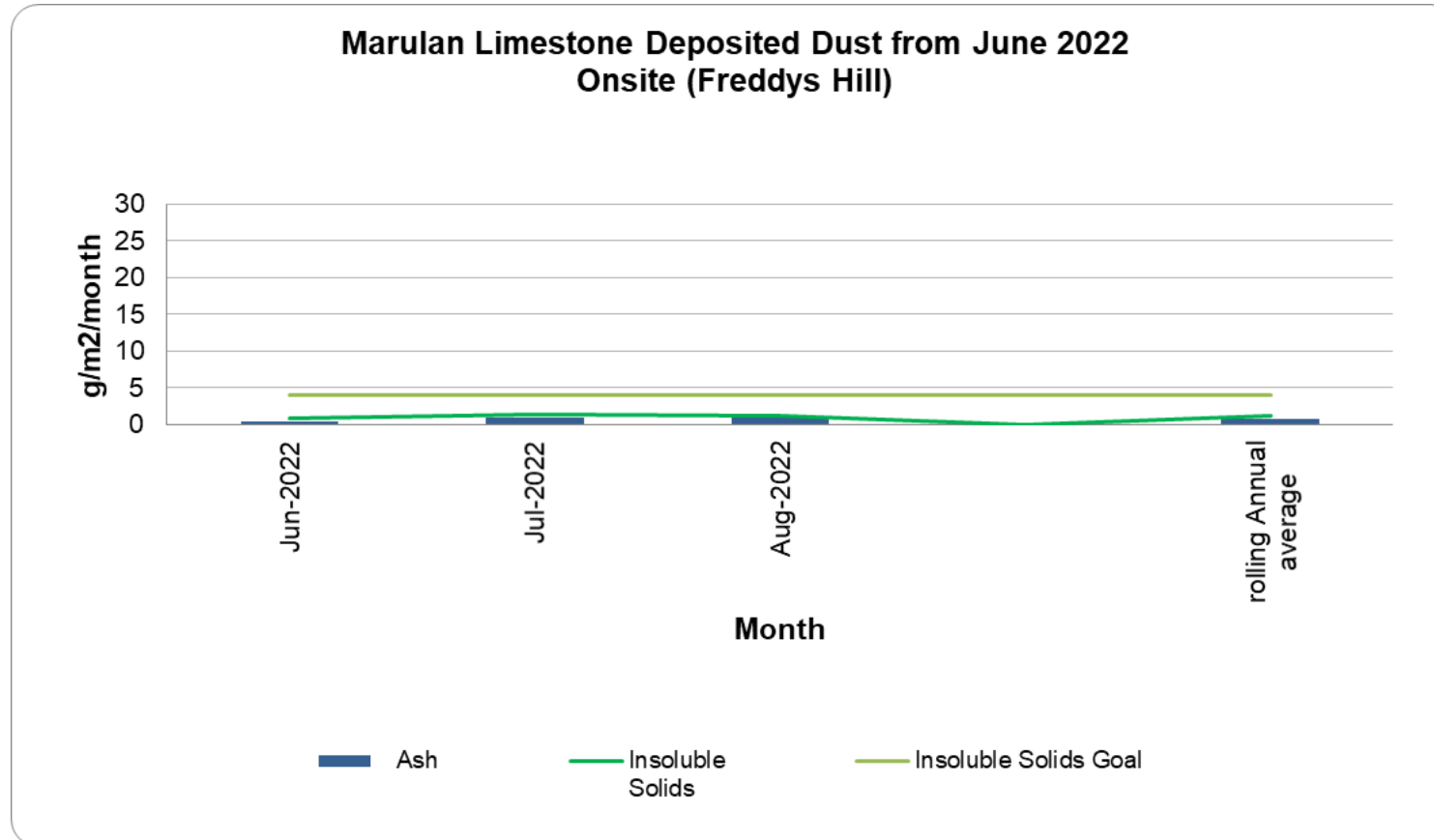


**Annual Average goal of 4gm2/month**

In compliance

Annual average below goal at the boundary

# Air – Dust deposition Site 2



**Annual Average goal of 4gm<sup>2</sup>/month**

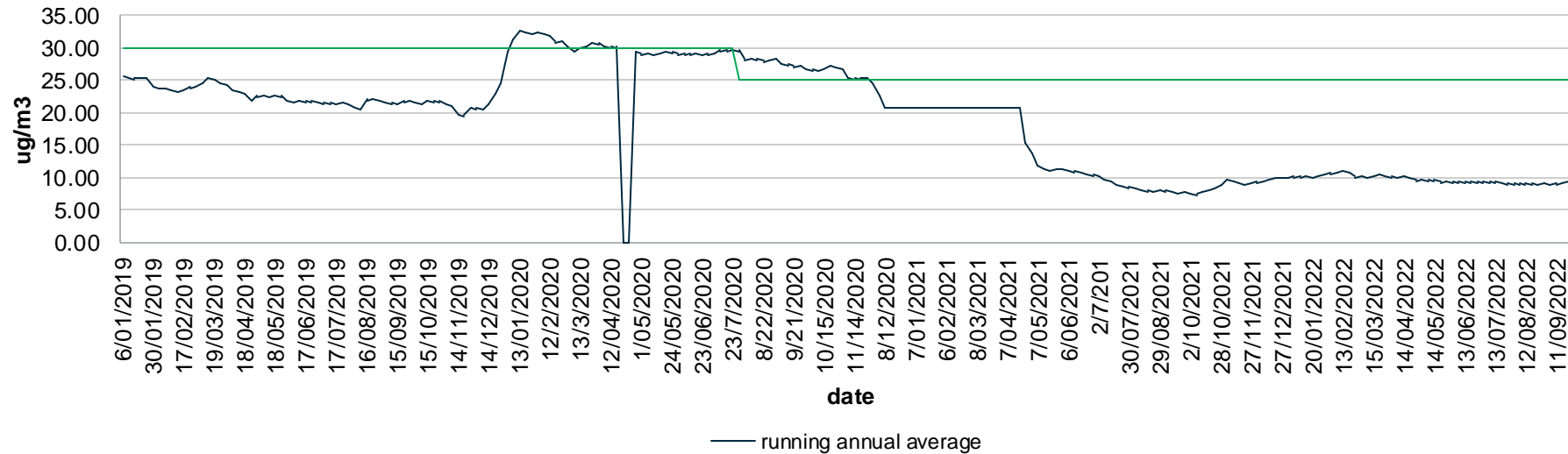
In compliance

Annual average below goal at the boundary



# Air – PM10 annual average

PM10 Annual average trend 2019 - 2022



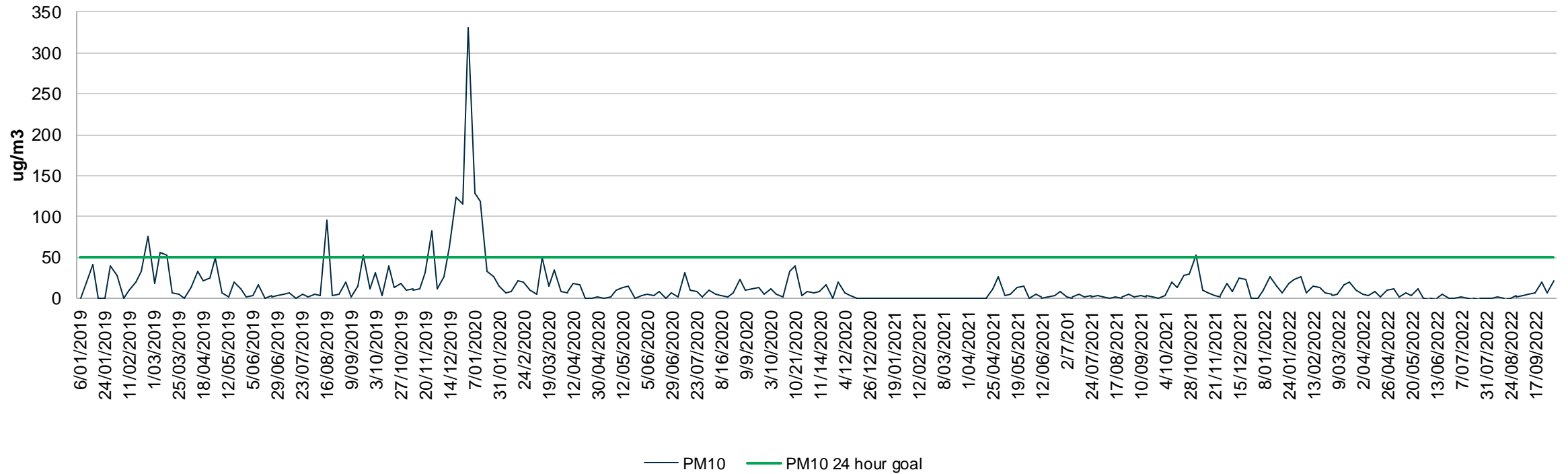
## Annual Average goal of 25ug/m<sup>3</sup>

In compliance

Annual average below goal at the boundary

# Air – PM10 24 Hour performance

Peppertree Quarry PM10 24 hour performance 2019 - 2022



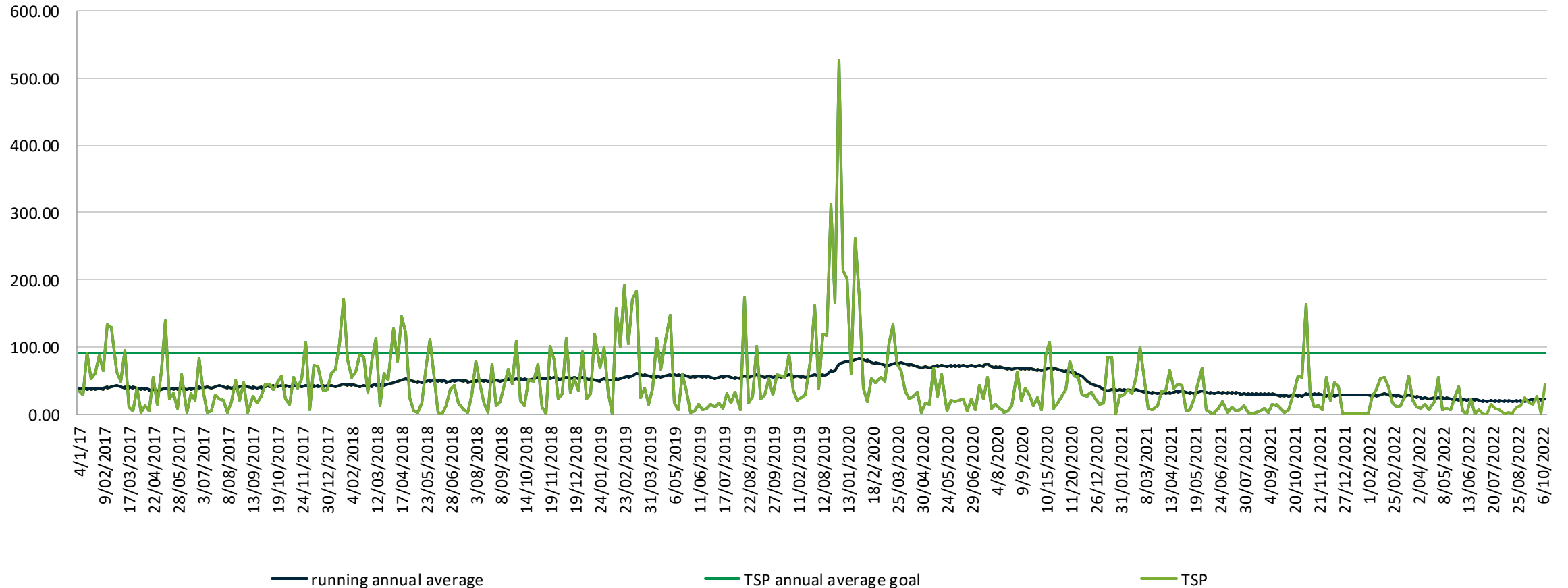
## 24 hour goal of 50ug/m3

In compliance

Annual average below goal at the boundary

# Air – Total Suspended Particulates

TSP Annual average trend 2017 - 2022



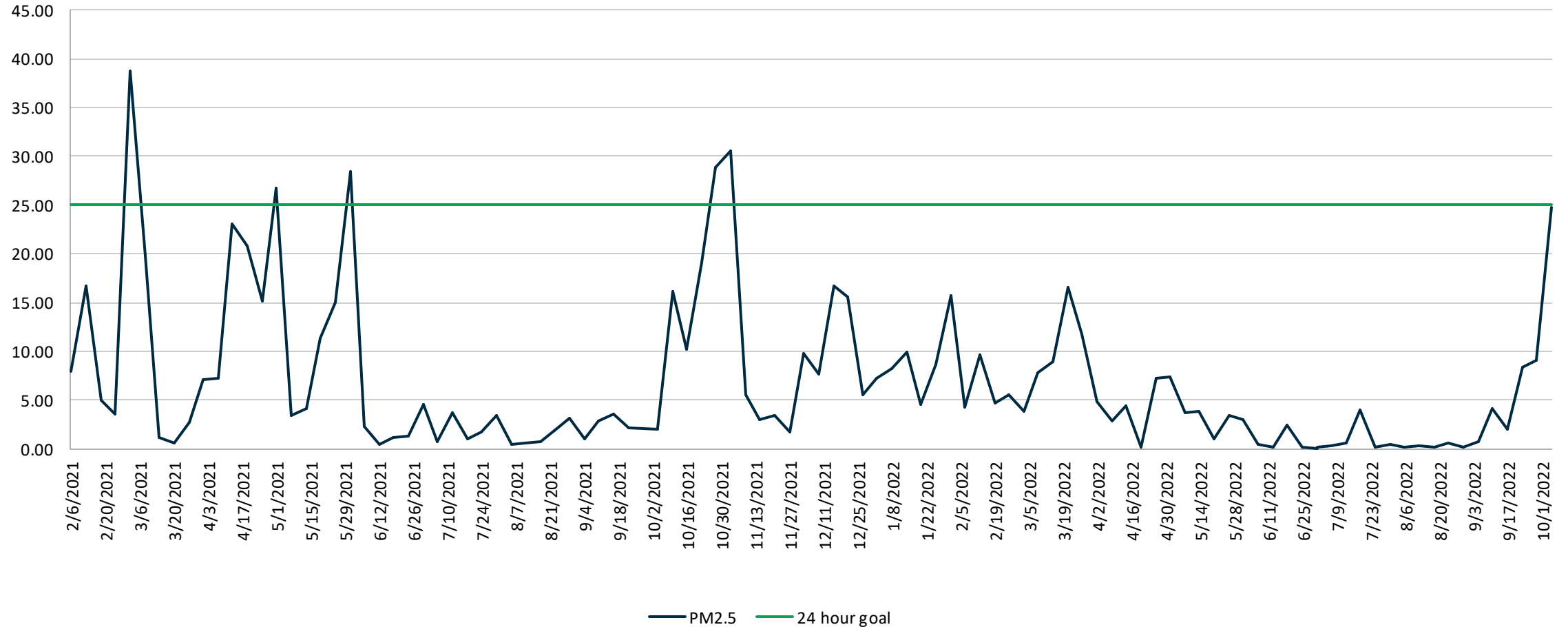
**Annual Average goal of 90ug/m3**

In compliance

Annual average below goal at the boundary

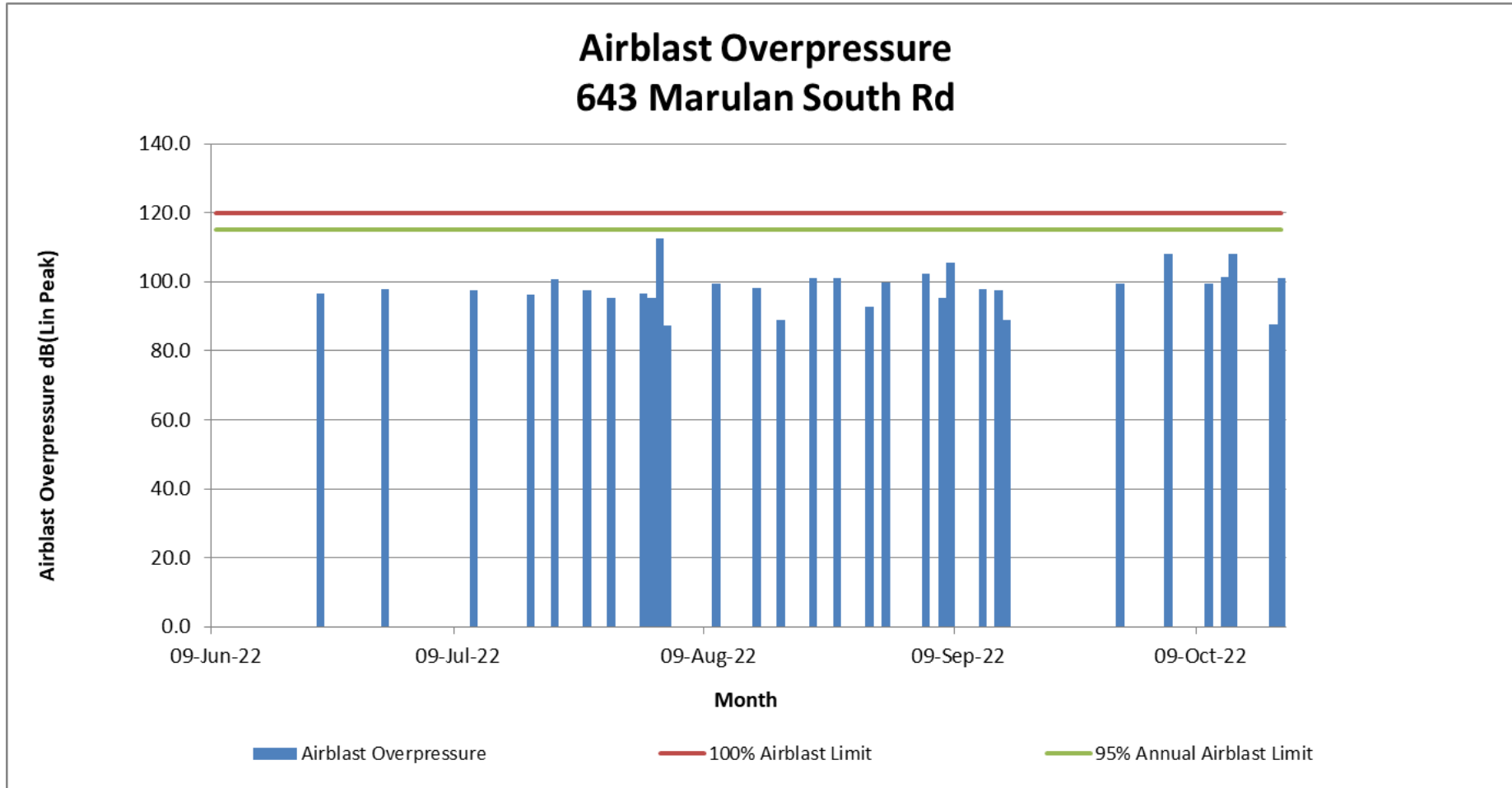
# Air – PM2.5

## PM2.5 24 hour 2021-2022



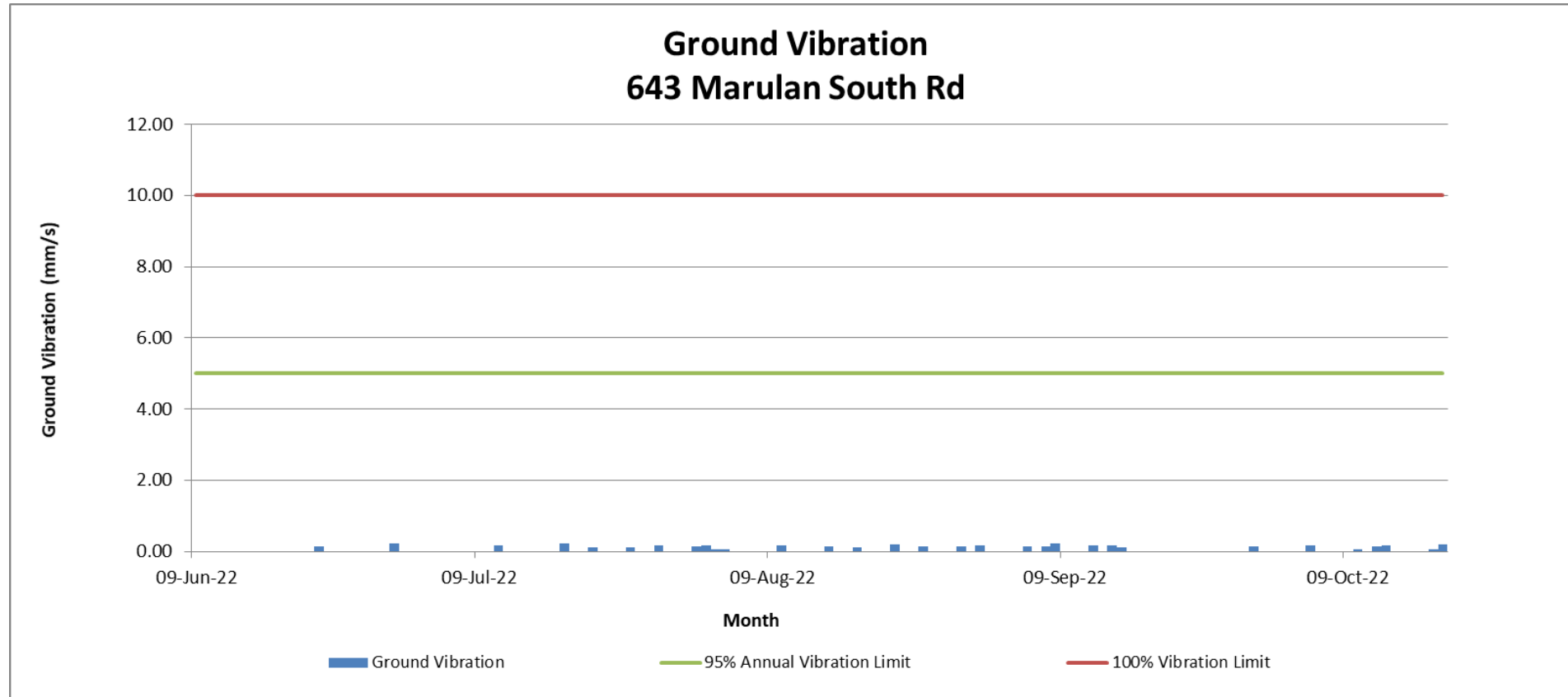
In compliance for the past 3 months.

# Blasting - Overpressure



In Compliance

# Blasting – ground Vibration



In Compliance



# Surface Water

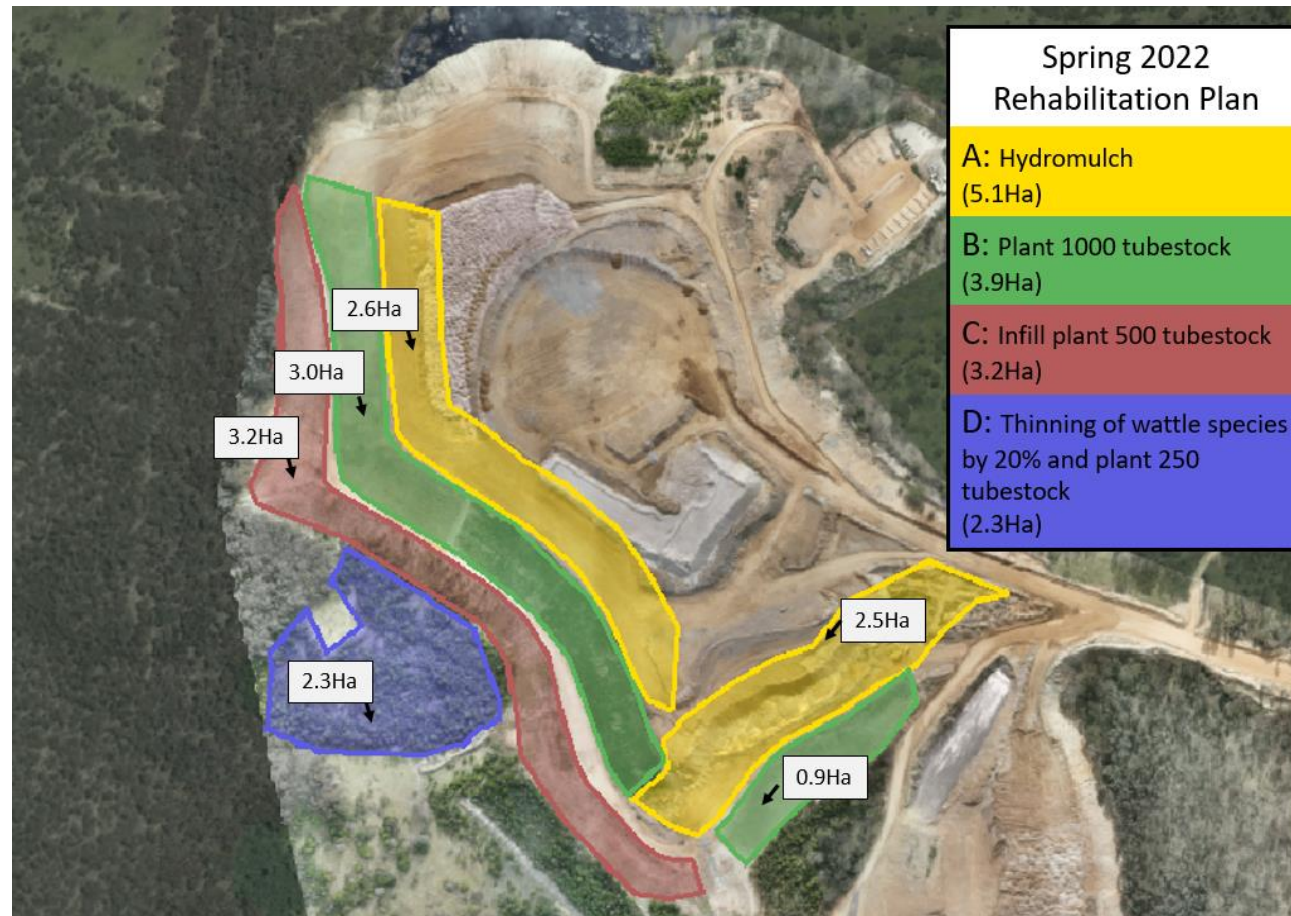
Surface water monitoring is undertaken biannually with sampling due in November 2022 which will be presented at the next CCC meeting.

# Ground water

- > We are currently awaiting results which will be displayed at the next CCC meeting.

# Ecology

Currently Rehabilitating the Western Overburden Elevation



# 07

## Stakeholder Engagement





Goulburn Mulwaree Council community bike ride

Tallong public school numeracy award

Tallong skate park

Pejar Local Aboriginal Land council yarning circle





# 08

Operations  
Next 3 months





## **Peppertree Quarry**

### **Safety**

Focus on the "life saving commitments" - particular focus on one per month

### **Overburden**

Continue to strip in a Southerly direction.

### **Pit Update**

Metso has been realigned to follow overburden stripping in a Southerly direction

### **Processing (STQ)**

Continue to supply aggregates and sand to Sydney metro.

### **People**

# Marulan South Limestone

## Safety

Focus on the behavioural safety.

## Overburden

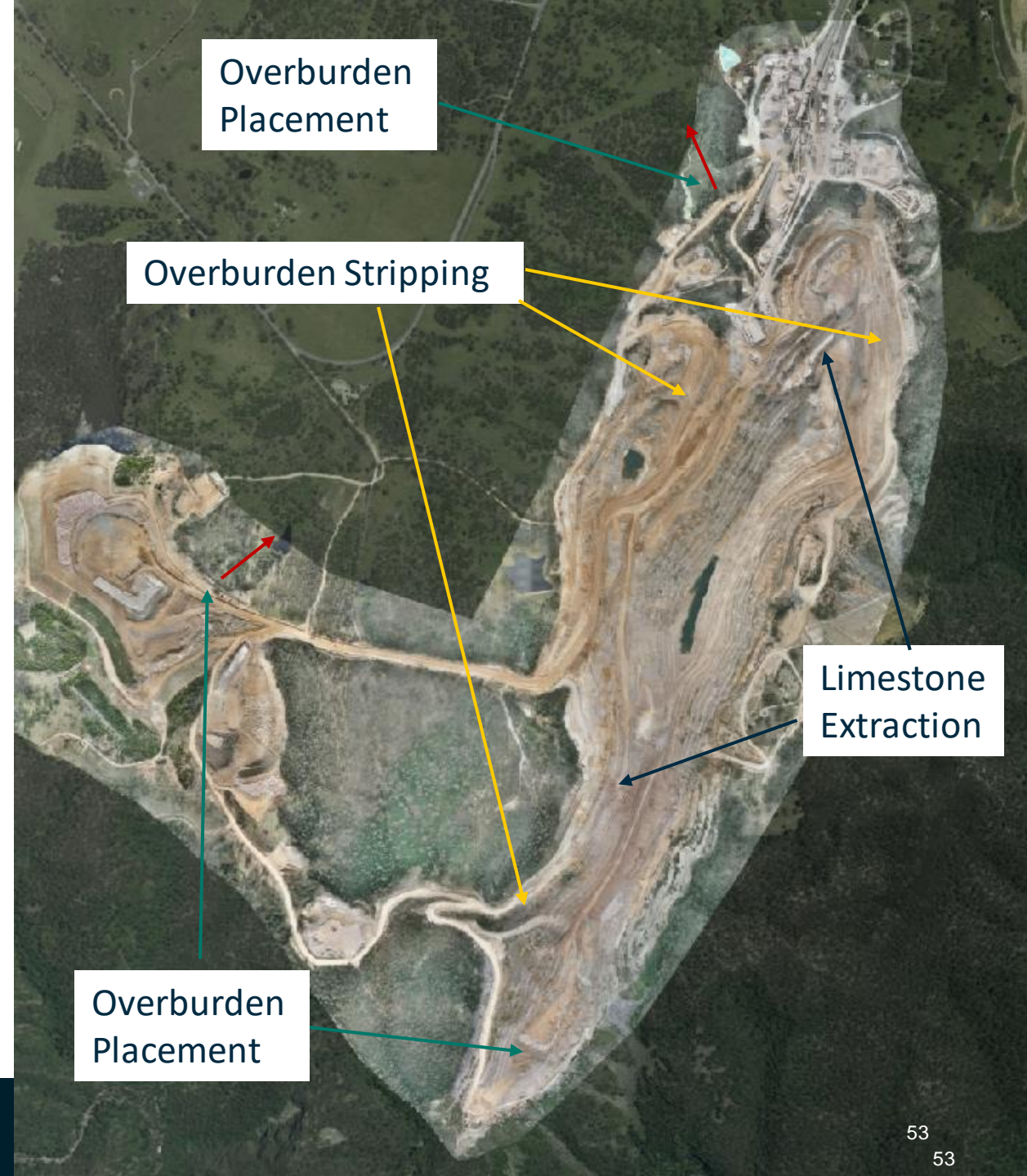
Overburden placement to begin, post final management plan approval, extending the western emplacement and adjacent to lime plant

## Pit Update

Also waiting on final approval of management plans and mining lease before extension to the west.

## People

Our Maintenance department will be advertising for 2 apprentices, a welder and a fitter as well as an electrical tradesperson.





# 09

General Business



## Other

# Next meeting

Jan 2023



Thanks for your participation