

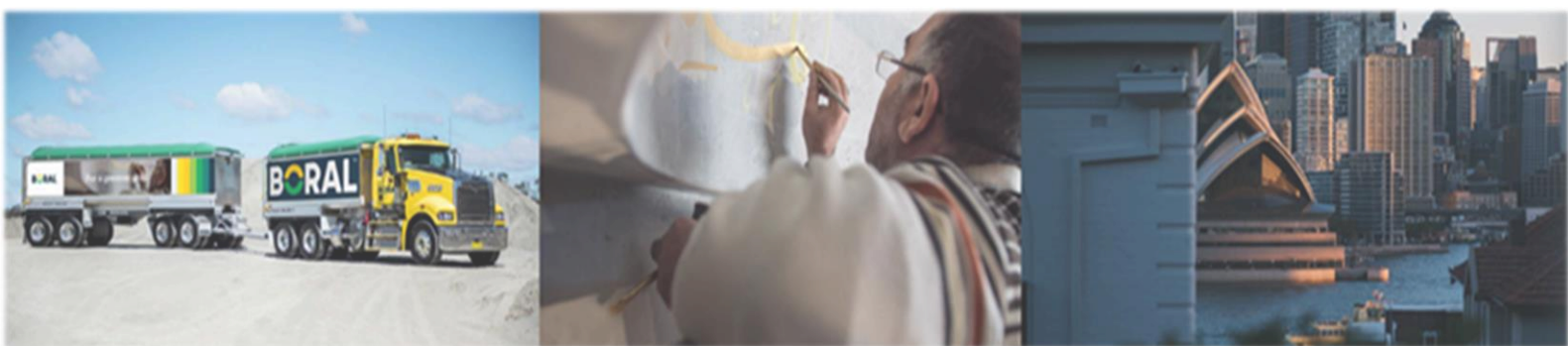


Environmental Monitoring Report

Dunmore Quarry

August 2024

Date Published: November 2024



Dunmore Quarry Environmental Monitoring Report

This monitoring report is to satisfy the requirements of Section 66 (6) of the Protection of the Environment and Operations Act 1997, to make available, within 14 days of request, any monitoring data that relates to pollution under an Environment Protection Licence.

The monitoring of pollutants provided in this report is undertaken as per the requirements of Environment Protection Licence 77 (EPL 77 – Boral Dunmore Quarry)

This report provides environmental monitoring data for Dunmore Quarry for the period January 2020 to November 2024.

Dunmore Quarry Information	
Premise Details	Boral – Dunmore Quarry
Address	Princes Highway, Dunmore NSW, 2529
Licensee	Boral Resources (NSW) PTY LTD
EPL N ^o	77
EPL Location	https://apps.epa.nsw.gov.au/prpoeoapp/Detail.aspx?instid=77&id=77&option=licence&searchrange=licence&range=POEO%20licence&prp=no&status=Issued

Monitoring data in this report relates to the monitoring undertaken in the reporting period for Deposited Dust.

Dunmore Quarry Environmental Monitoring Report

Air Quality

Air Quality Monitoring is conducted as per condition M2.2 of EPL 77. The air quality results for the reporting period are tabled below.

Deposited Dust

Deposited Dust (g/m²/month) results for the reporting period:

Sample Period: August 2024
 Date received: 13/09/2024
 Licensee: Dunmore Quarry
 Licensee Address: Princes Hwy, Dunmore NSW 2529
 EPL No: 77

Qualifications related to Dust

Air Emissions Monitoring - Dust Deposition Gauge

Location	Monitoring Frequency	Pollutant	Measurement	Unit	Comments
Monitoring Point 1 (Site 1A)	August Monthly	Insoluble Solids	0.19	g/m ² /month	
		Ash	0.03	g/m ² /month	
		Soluble Matter	0.16	g/m ² /month	
		Total Solids	0.80	g/m ² /month	
Monitoring Point 2 (Site 2A)	August Monthly	Insoluble Solids	1.17	g/m ² /month	
		Ash	0.60	g/m ² /month	
		Soluble Matter	0.57	g/m ² /month	
		Total Solids	3.67	g/m ² /month	
Monitoring Point 3 (Site DD2)	August Monthly	Insoluble Solids	1.23	g/m ² /month	
		Ash	0.53	g/m ² /month	
		Soluble Matter	0.70	g/m ² /month	
		Total Solids	2.26	g/m ² /month	
Monitoring Point 4 (Site DD10)	August Monthly	Insoluble Solids	1.46	g/m ² /month	
		Ash	0.97	g/m ² /month	
		Soluble Matter	0.49	g/m ² /month	
		Total Solids	3.32	g/m ² /month	

Dunmore Quarry Environmental Monitoring Report

Historical Data

Location	Date Received	Pollutant	Measurement	Unit	Comments
July 2024					
Monitoring Point 1 (Site 1A)	28/08/2024	Insoluble Solids	1.01	g/m ² /month	
		Ash	0.49	g/m ² /month	
		Soluble Matter	0.52	g/m ² /month	
		Total Solids	1.37	g/m ² /month	
Monitoring Point 2 (Site 2A)		Insoluble Solids	1.18	g/m ² /month	
		Ash	0.47	g/m ² /month	
		Soluble Matter	0.71	g/m ² /month	
		Total Solids	1.51	g/m ² /month	
Monitoring Point 3 (Site DD2)		Insoluble Solids	0.91	g/m ² /month	
		Ash	0.50	g/m ² /month	
		Soluble Matter	0.41	g/m ² /month	
		Total Solids	2.26	g/m ² /month	
Monitoring Point 4 (Site DD10)		Insoluble Solids	0.79	g/m ² /month	
		Ash	0.54	g/m ² /month	
		Soluble Matter	0.25	g/m ² /month	
		Total Solids	1.19	g/m ² /month	
June 2024					
Monitoring Point 1 (Site 1A)	23/07/2024	Insoluble Solids	0.99	g/m ² /month	
		Ash	0.72	g/m ² /month	
		Soluble Matter	0.27	g/m ² /month	
		Total Solids	1.14	g/m ² /month	
Monitoring Point 2 (Site 2A)		Insoluble Solids	1.23	g/m ² /month	
		Ash	0.42	g/m ² /month	
		Soluble Matter	0.81	g/m ² /month	
		Total Solids	1.39	g/m ² /month	
Monitoring Point 3 (Site DD2)		Insoluble Solids	0.28	g/m ² /month	
		Ash	0.22	g/m ² /month	
		Soluble Matter	0.06	g/m ² /month	
		Total Solids	1.38	g/m ² /month	
Monitoring Point 4 (Site DD10)		Insoluble Solids	0.57	g/m ² /month	
		Ash	0.32	g/m ² /month	
		Soluble Matter	0.25	g/m ² /month	
		Total Solids	1.71	g/m ² /month	
May 2024					
Monitoring Point 1 (Site 1A)	27/06/2024	Insoluble Solids	ND	g/m ² /month	
		Ash	ND	g/m ² /month	
		Soluble Matter	ND	g/m ² /month	
		Total Solids	ND	g/m ² /month	
Monitoring Point 2 (Site 2A)		Insoluble Solids	0.75	g/m ² /month	
		Ash	0.60	g/m ² /month	
		Soluble Matter	0.15	g/m ² /month	
		Total Solids	0.91	g/m ² /month	
Monitoring Point 3 (Site DD2)		Insoluble Solids	0.20	g/m ² /month	
		Ash	0.09	g/m ² /month	
		Soluble Matter	0.11	g/m ² /month	
		Total Solids	1.30	g/m ² /month	
Monitoring Point 4 (Site DD10)		Insoluble Solids	3.59	g/m ² /month	
		Ash	0.02	g/m ² /month	
		Soluble Matter	3.57	g/m ² /month	
		Total Solids	3.91	g/m ² /month	
April 2024					
	31/05/2024	Insoluble Solids	1.76	g/m ² /month	

Dunmore Quarry Environmental Monitoring Report

Monitoring Point 1 (Site 1A)		Ash	0.50	g/m ² /month
		Soluble Matter	1.26	g/m ² /month
		Total Solids	3.37	g/m ² /month
Monitoring Point 2 (Site 2A)		Insoluble Solids	1.93	g/m ² /month
		Ash	0.48	g/m ² /month
		Soluble Matter	1.45	g/m ² /month
Monitoring Point 3 (Site DD2)		Total Solids	2.91	g/m ² /month
		Insoluble Solids	1.51	g/m ² /month
		Ash	0.23	g/m ² /month
Monitoring Point 4 (Site DD10)		Soluble Matter	1.28	g/m ² /month
		Total Solids	3.27	g/m ² /month
		Insoluble Solids	1.86	g/m ² /month
		Ash	0.57	g/m ² /month
		Soluble Matter	1.29	g/m ² /month
		Total Solids	3.08	g/m ² /month
March 2024				
Monitoring Point 1 (Site 1A)	01/05/2024	Insoluble Solids	0.87	g/m ² /month
		Ash	0.65	g/m ² /month
		Soluble Matter	0.70	g/m ² /month
		Total Solids	1.56	g/m ² /month
Monitoring Point 2 (Site 2A)		Insoluble Solids	0.52	g/m ² /month
		Ash	0.43	g/m ² /month
		Soluble Matter	0.04	g/m ² /month
Monitoring Point 3 (Site DD2)		Total Solids	0.55	g/m ² /month
		Insoluble Solids	0.88	g/m ² /month
		Ash	0.61	g/m ² /month
Monitoring Point 4 (Site DD10)		Soluble Matter	0.41	g/m ² /month
		Total Solids	1.29	g/m ² /month
		Insoluble Solids	2.88	g/m ² /month
		Ash	1.25	g/m ² /month
		Soluble Matter	2.63	g/m ² /month
		Total Solids	5.52	g/m ² /month
February 2024				
Monitoring Point 1 (Site 1A)	4/3/2024	Insoluble Solids	2.97	g/m ² /month
		Ash	1.84	g/m ² /month
		Soluble Matter	1.76	g/m ² /month
		Total Solids	4.73	g/m ² /month
Monitoring Point 2 (Site 2A)		Insoluble Solids	1.82	g/m ² /month
		Ash	0.89	g/m ² /month
		Soluble Matter	2.28	g/m ² /month
Monitoring Point 3 (Site DD2)		Total Solids	4.10	g/m ² /month
		Insoluble Solids	2.12	g/m ² /month
		Ash	1.34	g/m ² /month
Monitoring Point 4 (Site DD10)		Soluble Matter	0.84	g/m ² /month
		Total Solids	2.96	g/m ² /month
		Insoluble Solids	2.30	g/m ² /month
		Ash	1.43	g/m ² /month
		Soluble Matter	0.64	g/m ² /month
		Total Solids	2.94	g/m ² /month
January 2024				
Monitoring Point 1 (Site 1A)	29/2/2024	Insoluble Solids	3.26	g/m ² /month
		Ash	1.51	g/m ² /month
		Soluble Matter	4.30	g/m ² /month
		Total Solids	7.56	g/m ² /month
Monitoring Point 2 (Site 2A)		Insoluble Solids	2.08	g/m ² /month
		Ash	1.66	g/m ² /month

Dunmore Quarry Environmental Monitoring Report

		Soluble Matter	4.61	g/m ² /month
		Total Solids	6.69	g/m ² /month
Monitoring Point 3 (Site DD2)		Insoluble Solids	1.12	g/m ² /month
		Ash	1.05	g/m ² /month
		Soluble Matter	5.48	g/m ² /month
		Total Solids	6.60	g/m ² /month
Monitoring Point 4 (Site DD10)		Insoluble Solids	1.38	g/m ² /month
		Ash	1.17	g/m ² /month
		Soluble Matter	4.48	g/m ² /month
		Total Solids	5.86	g/m ² /month
December 2023				
Monitoring Point 1 (Site 1A)	7/02/2024	Insoluble Solids	5.54	g/m ² /month
		Ash	1.58	g/m ² /month
		Soluble Matter	0.33	g/m ² /month
		Total Solids	5.87	g/m ² /month
Monitoring Point 2 (Site 2A)		Insoluble Solids	2.25	g/m ² /month
		Ash	0.94	g/m ² /month
		Soluble Matter	13.48	g/m ² /month
		Total Solids	15.73	g/m ² /month
Monitoring Point 3 (Site DD2)		Insoluble Solids	5.80	g/m ² /month
		Ash	1.60	g/m ² /month
		Soluble Matter	1.12	g/m ² /month
		Total Solids	6.92	g/m ² /month
Monitoring Point 4 (Site DD10)		Insoluble Solids	3.15	g/m ² /month
		Ash	0.46	g/m ² /month
		Soluble Matter	0.85	g/m ² /month
		Total Solids	4.01	g/m ² /month
November 2023				
Monitoring Point 1 (Site 1A)	10/01/2024	Insoluble Solids	2.46	g/m ² /month
		Ash	0.35	g/m ² /month
		Soluble Matter	1.35	g/m ² /month
		Total Solids	3.81	g/m ² /month
Monitoring Point 2 (Site 2A)		Insoluble Solids	0.39	g/m ² /month
		Ash	0.24	g/m ² /month
		Soluble Matter	0.88	g/m ² /month
		Total Solids	1.26	g/m ² /month
Monitoring Point 3 (Site DD2)		Insoluble Solids	1.78	g/m ² /month
		Ash	0.96	g/m ² /month
		Soluble Matter	0.72	g/m ² /month
		Total Solids	2.50	g/m ² /month
Monitoring Point 4 (Site DD10)		Insoluble Solids	0.81	g/m ² /month
		Ash	0.33	g/m ² /month
		Soluble Matter	0.35	g/m ² /month
		Total Solids	1.16	g/m ² /month
October 2023				
Monitoring Point 1 (Site 1A)	11/12/2023	Insoluble Solids	1.56	g/m ² /month
		Ash	0.84	g/m ² /month
		Soluble Matter	1.16	g/m ² /month
		Total Solids	2.72	g/m ² /month
Monitoring Point 2 (Site 2A)		Insoluble Solids	0.90	g/m ² /month
		Ash	0.24	g/m ² /month
		Soluble Matter	0.91	g/m ² /month
		Total Solids	1.81	g/m ² /month
Monitoring Point 3 (Site DD2)		Insoluble Solids	1.97	g/m ² /month
		Ash	0.61	g/m ² /month
		Soluble Matter	0.33	g/m ² /month
		Total Solids	2.30	g/m ² /month
		Insoluble Solids	1.96	g/m ² /month

Dunmore Quarry Environmental Monitoring Report

Monitoring Point 4 (Site DD10)		Ash	1.06	g/m ² /month
		Soluble Matter	1.04	g/m ² /month
		Total Solids	2.99	g/m ² /month
September 2023				
Monitoring Point 1 (Site 1A)	31/10/23	Insoluble Solids	0.52	g/m ² /month
		Ash	0.40	g/m ² /month
		Soluble Matter	0.03	g/m ² /month
		Total Solids	0.55	g/m ² /month
Monitoring Point 2 (Site 2A)		Insoluble Solids	3.80	g/m ² /month
		Ash	1.55	g/m ² /month
		Soluble Matter	0.17	g/m ² /month
		Total Solids	3.97	g/m ² /month
Monitoring Point 3 (Site DD2)		Insoluble Solids	2.17	g/m ² /month
		Ash	1.84	g/m ² /month
		Soluble Matter	0.30	g/m ² /month
		Total Solids	2.47	g/m ² /month
Monitoring Point 4 (Site DD10)		Insoluble Solids	2.40	g/m ² /month
		Ash	1.07	g/m ² /month
		Soluble Matter	2.41	g/m ² /month
		Total Solids	4.84	g/m ² /month
August 2023				
Monitoring Point 1 (Site 1A)	31/10/23	Insoluble Solids	1.96	g/m ² /month
		Ash	1.30	g/m ² /month
		Soluble Matter	2.29	g/m ² /month
		Total Solids	4.25	g/m ² /month
Monitoring Point 2 (Site 2A)		Insoluble Solids	1.64	g/m ² /month
		Ash	0.42	g/m ² /month
		Soluble Matter	0.83	g/m ² /month
		Total Solids	2.48	g/m ² /month
Monitoring Point 3 (Site DD2)		Insoluble Solids	3.37	g/m ² /month
		Ash	0.47	g/m ² /month
		Soluble Matter	0.39	g/m ² /month
		Total Solids	3.76	g/m ² /month
Monitoring Point 4 (Site DD10)		Insoluble Solids	1.64	g/m ² /month
		Ash	0.63	g/m ² /month
		Soluble Matter	0.53	g/m ² /month
		Total Solids	2.18	g/m ² /month
July 2023				
Monitoring Point 1 (Site 1A)	5/09/2023	Insoluble Solids	1.28	g/m ² /month
		Ash	1.17	g/m ² /month
		Soluble Matter	1.64	g/m ² /month
		Total Solids	2.92	g/m ² /month
Monitoring Point 2 (Site 2A)	5/09/2023	Insoluble Solids	1.00	g/m ² /month
		Ash	1.00	g/m ² /month
		Soluble Matter	0.72	g/m ² /month
		Total Solids	1.72	g/m ² /month
Monitoring Point 3 (Site DD2)	5/09/2023	Insoluble Solids	0.92	g/m ² /month
		Ash	0.53	g/m ² /month
		Soluble Matter	2.14	g/m ² /month
		Total Solids	3.06	g/m ² /month
Monitoring Point 4 (Site DD10)	5/09/2023	Insoluble Solids	0.62	g/m ² /month
		Ash	0.47	g/m ² /month
		Soluble Matter	1.80	g/m ² /month
		Total Solids	2.41	g/m ² /month
June 2023				
Monitoring Point 1 (Site 1A)	24/08/23	Insoluble Solids	1.02	g/m ² /month
		Ash	0.43	g/m ² /month
		Soluble Matter	0.27	g/m ² /month

Dunmore Quarry Environmental Monitoring Report

		Total Solids	1.29	g/m ² /month	
Monitoring Point 2 (Site 2A)	24/08/23	Insoluble Solids	0.45	g/m ² /month	
		Ash	0.05	g/m ² /month	
		Soluble Matter	0.29	g/m ² /month	
		Total Solids	0.75	g/m ² /month	
Monitoring Point 3 (Site DD2)	24/08/23	Insoluble Solids	1.28	g/m ² /month	
		Ash	0.68	g/m ² /month	
		Soluble Matter	0.11	g/m ² /month	
		Total Solids	1.39	g/m ² /month	
Monitoring Point 4 (Site DD10)	24/08/23	Insoluble Solids	0.69	g/m ² /month	
		Ash	0.46	g/m ² /month	
		Soluble Matter	19.91	g/m ² /month	
		Total Solids	20.6	g/m ² /month	
May 2023					
Monitoring Point 1 (Site 1A)	03/07/23	Insoluble Solids	ND	g/m ² /month	No data as sample was contaminated
		Ash	ND	g/m ² /month	
		Soluble Matter	ND	g/m ² /month	
		Total Solids	ND	g/m ² /month	
Monitoring Point 2 (Site 2A)	03/07/23	Insoluble Solids	0.5	g/m ² /month	
		Ash	0.48	g/m ² /month	
		Soluble Matter	1.10	g/m ² /month	
		Total Solids	1.60	g/m ² /month	
Monitoring Point 3 (Site DD2)	03/07/23	Insoluble Solids	0.65	g/m ² /month	
		Ash	0.63	g/m ² /month	
		Soluble Matter	1.30	g/m ² /month	
		Total Solids	2.02	g/m ² /month	
Monitoring Point 4 (Site DD10)	03/07/23	Insoluble Solids	1.01	g/m ² /month	
		Ash	0.63	g/m ² /month	
		Soluble Matter	1.79	g/m ² /month	
		Total Solids	2.80	g/m ² /month	
April 2023					
Monitoring Point 1 (Site 1A)	05/06/2023	Insoluble Solids	0.89	g/m ² /month	
		Ash	0.88	g/m ² /month	
		Soluble Matter	1.40	g/m ² /month	
		Total Solids	2.29	g/m ² /month	
Monitoring Point 2 (Site 2A)	05/06/2023	Insoluble Solids	1.02	g/m ² /month	
		Ash	0.70	g/m ² /month	
		Soluble Matter	0.73	g/m ² /month	
		Total Solids	1.75	g/m ² /month	
Monitoring Point 3 (Site DD2)	05/06/2023	Insoluble Solids	2.64	g/m ² /month	
		Ash	1.15	g/m ² /month	
		Soluble Matter	2.23	g/m ² /month	
		Total Solids	4.87	g/m ² /month	
Monitoring Point 4 (Site DD10)	05/06/2023	Insoluble Solids	1.30	g/m ² /month	
		Ash	0.77	g/m ² /month	
		Soluble Matter	1.79	g/m ² /month	
		Total Solids	3.13	g/m ² /month	
March 2023					
Monitoring Point 1 (Site 1A)	05/06/2023	Insoluble Solids	0.77	g/m ² /month	
		Ash	0.59	g/m ² /month	
		Soluble Matter	10.75	g/m ² /month	
		Total Solids	11.52	g/m ² /month	
Monitoring Point 2 (Site 2A)	05/06/2023	Insoluble Solids	1.64	g/m ² /month	
		Ash	1.19	g/m ² /month	
		Soluble Matter	9.21	g/m ² /month	
		Total Solids	10.85	g/m ² /month	
Monitoring Point 3 (Site DD2)	05/06/2023	Insoluble Solids	6.83	g/m ² /month	
		Ash	2.55	g/m ² /month	

Dunmore Quarry Environmental Monitoring Report

		Soluble Matter	9.77	g/m ² /month
		Total Solids	16.61	g/m ² /month
Monitoring Point 4 (Site DD10)	05/06/2023	Insoluble Solids	2.41	g/m ² /month
		Ash	2.17	g/m ² /month
		Soluble Matter	9.40	g/m ² /month
		Total Solids	11.81	g/m ² /month
February 2023				
Monitoring Point 1 (Site 1A)	04/04/2023	Insoluble Solids	2.20	g/m ² /month
		Ash	0.66	g/m ² /month
		Soluble Matter	1.07	g/m ² /month
		Total Solids	3.27	g/m ² /month
Monitoring Point 2 (Site 2A)	04/04/2023	Insoluble Solids	1.89	g/m ² /month
		Ash	0.66	g/m ² /month
		Soluble Matter	0.24	g/m ² /month
		Total Solids	2.14	g/m ² /month
Monitoring Point 3 (Site DD2)	04/04/2023	Insoluble Solids	1.98	g/m ² /month
		Ash	1.68	g/m ² /month
		Soluble Matter	0.42	g/m ² /month
		Total Solids	2.40	g/m ² /month
Monitoring Point 4 (Site DD10)	04/04/2023	Insoluble Solids	1.26	g/m ² /month
		Ash	0.66	g/m ² /month
		Soluble Matter	0.56	g/m ² /month
		Total Solids	1.82	g/m ² /month
January 2023				
Monitoring Point 1 (Site 1A)	04/04/2023	Insoluble Solids	2.26	g/m ² /month
		Ash	0.77	g/m ² /month
		Soluble Matter	0.26	g/m ² /month
		Total Solids	2.52	g/m ² /month
Monitoring Point 2 (Site 2A)	04/04/2023	Insoluble Solids	0.67	g/m ² /month
		Ash	0.56	g/m ² /month
		Soluble Matter	1.45	g/m ² /month
		Total Solids	2.12	g/m ² /month
Monitoring Point 3 (Site DD2)	04/04/2023	Insoluble Solids	1.40	g/m ² /month
		Ash	0.54	g/m ² /month
		Soluble Matter	0.78	g/m ² /month
		Total Solids	2.18	g/m ² /month
Monitoring Point 4 (Site DD10)	04/04/2023	Insoluble Solids	1.23	g/m ² /month
		Ash	0.60	g/m ² /month
		Soluble Matter	0.51	g/m ² /month
		Total Solids	1.74	g/m ² /month
December 2022				
Monitoring Point 1 (Site 1A)	04/04/2023	Insoluble Solids	11.74	g/m ² /month
		Ash	6.72	g/m ² /month
		Soluble Matter	4.57	g/m ² /month
		Total Solids	16.31	g/m ² /month
Monitoring Point 2 (Site 2A)	04/04/2023	Insoluble Solids	3.27	g/m ² /month
		Ash	1.51	g/m ² /month
		Soluble Matter	5.21	g/m ² /month
		Total Solids	8.48	g/m ² /month
Monitoring Point 3 (Site DD2)	04/04/2023	Insoluble Solids	1.10	g/m ² /month
		Ash	0.97	g/m ² /month
		Soluble Matter	3.79	g/m ² /month
		Total Solids	4.88	g/m ² /month
Monitoring Point 4 (Site DD10)	04/04/2023	Insoluble Solids	1.45	g/m ² /month
		Ash	1.29	g/m ² /month
		Soluble Matter	0.73	g/m ² /month
		Total Solids	2.18	g/m ² /month
November 2022				

Dunmore Quarry Environmental Monitoring Report

Monitoring Point 1 (Site 1A)	12/01/2023	Insoluble Solids	1.32	g/m ² /month	
		Ash	0.94	g/m ² /month	
		Soluble Matter	3.97	g/m ² /month	
		Total Solids	5.29	g/m ² /month	
Monitoring Point 2 (Site 2A)	12/01/2023	Insoluble Solids	0.87	g/m ² /month	
		Ash	0.69	g/m ² /month	
		Soluble Matter	0.34	g/m ² /month	
		Total Solids	1.21	g/m ² /month	
Monitoring Point 3 (Site DD2)	12/01/2023	Insoluble Solids	1.24	g/m ² /month	
		Ash	0.76	g/m ² /month	
		Soluble Matter	0.08	g/m ² /month	
		Total Solids	1.33	g/m ² /month	
Monitoring Point 4 (Site DD10)	12/01/2023	Insoluble Solids	1.43	g/m ² /month	
		Ash	1.18	g/m ² /month	
		Soluble Matter	4.97	g/m ² /month	
		Total Solids	6.40	g/m ² /month	
October 2022					
Monitoring Point 1 (Site 1A)	14/11/2022	Insoluble Solids	1.59	g/m ² /month	
		Ash	0.54	g/m ² /month	
		Soluble Matter	0.18	g/m ² /month	
		Total Solids	1.77	g/m ² /month	
Monitoring Point 2 (Site 2A)	14/11/2022	Insoluble Solids	2.05	g/m ² /month	
		Ash	0.37	g/m ² /month	
		Soluble Matter	0.02	g/m ² /month	
		Total Solids	2.08	g/m ² /month	
Monitoring Point 3 (Site DD2)	14/11/2022	Insoluble Solids	ND	g/m ² /month	No Data as sample was contaminated.
		Ash	ND	g/m ² /month	
		Soluble Matter	ND	g/m ² /month	
		Total Solids	ND	g/m ² /month	
Monitoring Point 4 (Site DD10)	14/11/2022	Insoluble Solids	1.15	g/m ² /month	
		Ash	0.69	g/m ² /month	
		Soluble Matter	1.13	g/m ² /month	
		Total Solids	2.28	g/m ² /month	
September 2022					
Monitoring Point 1 (Site 1A)	14/11/2022	Insoluble Solids	2.1	g/m ² /month	
		Ash	1.14	g/m ² /month	
		Soluble Matter	0.14	g/m ² /month	
		Total Solids	2.24	g/m ² /month	
Monitoring Point 2 (Site 2A)	14/11/2022	Insoluble Solids	2.49	g/m ² /month	
		Ash	1.40	g/m ² /month	
		Soluble Matter	0.09	g/m ² /month	
		Total Solids	2.58	g/m ² /month	
Monitoring Point 3 (Site DD2)	14/11/2022	Insoluble Solids	2.32	g/m ² /month	
		Ash	1.45	g/m ² /month	
		Soluble Matter	1.40	g/m ² /month	
		Total Solids	3.72	g/m ² /month	
Monitoring Point 4 (Site DD10)	14/11/2022	Insoluble Solids	2.32	g/m ² /month	
		Ash	1.30	g/m ² /month	
		Soluble Matter	1.69	g/m ² /month	
		Total Solids	4.00	g/m ² /month	
August 2022					
Monitoring Point 1 (Site 1A)	28/9/2022	Insoluble Solids	0.82	g/m ² /month	
		Ash	0.43	g/m ² /month	
		Soluble Matter	0.38	g/m ² /month	
		Total Solids	1.20	g/m ² /month	
Monitoring Point 2 (Site 2A)	28/9/2022	Insoluble Solids	0.32	g/m ² /month	
		Ash	0.24	g/m ² /month	
		Soluble Matter	0.28	g/m ² /month	

Dunmore Quarry Environmental Monitoring Report

		Total Solids	0.60	g/m ² /month	
Monitoring Point 3 (Site DD2)	28/9/2022	Insoluble Solids	1.82	g/m ² /month	
		Ash	1.74	g/m ² /month	
		Soluble Matter	0.06	g/m ² /month	
		Total Solids	1.88	g/m ² /month	
Monitoring Point 4 (Site DD10)	28/9/2022	Insoluble Solids	0.98	g/m ² /month	
		Ash	0.73	g/m ² /month	
		Soluble Matter	0.66	g/m ² /month	
		Total Solids	1.64	g/m ² /month	
July 2022					
Monitoring Point 1 (Site 1A)	31/08/2022	Insoluble Solids	0.14	g/m ² /month	
		Ash	0.11	g/m ² /month	
		Soluble Matter	0.51	g/m ² /month	
		Total Solids	0.65	g/m ² /month	
Monitoring Point 2 (Site 2A)	31/08/2022	Insoluble Solids	0.69	g/m ² /month	
		Ash	0.46	g/m ² /month	
		Soluble Matter	1.22	g/m ² /month	
		Total Solids	1.92	g/m ² /month	
Monitoring Point 3 (Site DD2)	31/08/2022	Insoluble Solids	5.06	g/m ² /month	
		Ash	3.16	g/m ² /month	
		Soluble Matter	0.04	g/m ² /month	
		Total Solids	5.10	g/m ² /month	
Monitoring Point 4 (Site DD10)	31/08/2022	Insoluble Solids	0.63	g/m ² /month	
		Ash	0.36	g/m ² /month	
		Soluble Matter	0.48	g/m ² /month	
		Total Solids	1.11	g/m ² /month	
June 2022					
Monitoring Point 1 (Site 1A)	02/08/2022	Insoluble Solids	0.65	g/m ² /month	
		Ash	0.17	g/m ² /month	
		Soluble Matter	0.68	g/m ² /month	
		Total Solids	1.33	g/m ² /month	
Monitoring Point 2 (Site 2A)	02/08/2022	Insoluble Solids	1.17	g/m ² /month	
		Ash	0.11	g/m ² /month	
		Soluble Matter	0.30	g/m ² /month	
		Total Solids	1.47	g/m ² /month	
Monitoring Point 3 (Site DD2)	02/08/2022	Insoluble Solids	0.85	g/m ² /month	
		Ash	0.56	g/m ² /month	
		Soluble Matter	1.57	g/m ² /month	
		Total Solids	2.42	g/m ² /month	
Monitoring Point 4 (Site DD10)	02/08/2022	Insoluble Solids	0.67	g/m ² /month	
		Ash	0.31	g/m ² /month	
		Soluble Matter	0.87	g/m ² /month	
		Total Solids	1.54	g/m ² /month	
May 2022					
Monitoring Point 1 (Site 1A)	1/07/2022	Insoluble Solids	0.57	g/m ² /month	
		Ash	0.27	g/m ² /month	
		Soluble Matter	0.18	g/m ² /month	
		Total Solids	0.75	g/m ² /month	
Monitoring Point 2 (Site 2A)	1/07/2022	Insoluble Solids	1.28	g/m ² /month	
		Ash	0.63	g/m ² /month	
		Soluble Matter	0.27	g/m ² /month	
		Total Solids	1.55	g/m ² /month	
Monitoring Point 3 (Site DD2)	1/07/2022	Insoluble Solids	1.34	g/m ² /month	
		Ash	0.27	g/m ² /month	
		Soluble Matter	0.56	g/m ² /month	
		Total Solids	1.89	g/m ² /month	
Monitoring Point 4 (Site DD10)	1/07/2022	Insoluble Solids	2.44	g/m ² /month	
		Ash	1.04	g/m ² /month	

Dunmore Quarry Environmental Monitoring Report

		Soluble Matter	0.48	g/m ² /month	
		Total Solids	2.91	g/m ² /month	
April 2022					
Monitoring Point 1 (Site 1A)	20/06/2022	Insoluble Solids	0.98	g/m ² /month	
		Ash	0.30	g/m ² /month	
		Soluble Matter	0.07	g/m ² /month	
		Total Solids	1.06	g/m ² /month	
Monitoring Point 2 (Site 2A)	20/06/2022	Insoluble Solids	1.01	g/m ² /month	
		Ash	0.33	g/m ² /month	
		Soluble Matter	0.46	g/m ² /month	
		Total Solids	1.47	g/m ² /month	
Monitoring Point 3 (Site DD2)	25/05/2022	Insoluble Solids	0.88	g/m ² /month	
		Ash	0.32	g/m ² /month	
		Soluble Matter	0.50	g/m ² /month	
		Total Solids	1.38	g/m ² /month	
Monitoring Point 4 (Site DD10)	25/05/2022	Insoluble Solids	1.31	g/m ² /month	
		Ash	0.34	g/m ² /month	
		Soluble Matter	0.18	g/m ² /month	
		Total Solids	1.49	g/m ² /month	
March 2022					
Monitoring Point 1 (Site 1A)	29/04/2022	Insoluble Solids	0.31	g/m ² /month	
		Ash	0.17	g/m ² /month	
		Soluble Matter	0.04	g/m ² /month	
		Total Solids	0.35	g/m ² /month	
Monitoring Point 2 (Site 2A)	29/04/2022	Insoluble Solids	0.08	g/m ² /month	
		Ash	0.02	g/m ² /month	
		Soluble Matter	0.25	g/m ² /month	
		Total Solids	0.33	g/m ² /month	
Monitoring Point 3 (Site DD2)	29/04/2022	Insoluble Solids	0.68	g/m ² /month	
		Ash	0.09	g/m ² /month	
		Soluble Matter	0.04	g/m ² /month	
		Total Solids	0.72	g/m ² /month	
Monitoring Point 4 (Site DD10)	29/04/2022	Insoluble Solids	0.50	g/m ² /month	
		Ash	0.10	g/m ² /month	
		Soluble Matter	0.03	g/m ² /month	
		Total Solids	0.53	g/m ² /month	
February 2022					
Monitoring Point 1 (Site 1A)	30/03/2022	Insoluble Solids	2.50	g/m ² /month	
		Ash	0.70	g/m ² /month	
		Soluble Matter	0.47	g/m ² /month	
		Total Solids	2.96	g/m ² /month	
Monitoring Point 2 (Site 2A)	30/03/2022	Insoluble Solids	1.69	g/m ² /month	
		Ash	0.60	g/m ² /month	
		Soluble Matter	0.02	g/m ² /month	
		Total Solids	1.70	g/m ² /month	
Monitoring Point 3 (Site DD2)	30/03/2022	Insoluble Solids	1.19	g/m ² /month	
		Ash	0.62	g/m ² /month	
		Soluble Matter	0.14	g/m ² /month	
		Total Solids	1.49	g/m ² /month	
Monitoring Point 4 (Site DD10)	30/03/2022	Insoluble Solids	1.42	g/m ² /month	
		Ash	0.17	g/m ² /month	
		Soluble Matter	0.04	g/m ² /month	
		Total Solids	1.46	g/m ² /month	
January 2022					
Monitoring Point 1 (Site 1A)	23/02/2022	Insoluble Solids	ND	g/m ² /month	Glass bottle broken in transit, no data available.
		Ash	ND	g/m ² /month	
		Soluble Matter	ND	g/m ² /month	
		Total Solids	ND	g/m ² /month	

Dunmore Quarry Environmental Monitoring Report

Monitoring Point 2 (Site 2A)	23/02/2022	Insoluble Solids	2.12	g/m ² /month
		Ash	1.41	g/m ² /month
		Soluble Matter	0.76	g/m ² /month
		Total Solids	2.87	g/m ² /month
Monitoring Point 3 (Site DD2)	23/02/2022	Insoluble Solids	1.41	g/m ² /month
		Ash	0.95	g/m ² /month
		Soluble Matter	1.09	g/m ² /month
		Total Solids	2.50	g/m ² /month
Monitoring Point 4 (Site DD10)	23/02/2022	Insoluble Solids	0.42	g/m ² /month
		Ash	0.28	g/m ² /month
		Soluble Matter	0.07	g/m ² /month
		Total Solids	0.49	g/m ² /month
December 2021				
Monitoring Point 1 (Site 1A)	08/02/22	Insoluble Solids	3.71	g/m ² /month
		Ash	1.44	g/m ² /month
		Soluble Matter	4.11	g/m ² /month
		Total Solids	7.82	g/m ² /month
Monitoring Point 2 (Site 2A)	08/02/22	Insoluble Solids	3.42	g/m ² /month
		Ash	0.90	g/m ² /month
		Soluble Matter	1.44	g/m ² /month
		Total Solids	4.86	g/m ² /month
Monitoring Point 3 (Site DD2)	08/02/22	Insoluble Solids	2.26	g/m ² /month
		Ash	1.03	g/m ² /month
		Soluble Matter	6.28	g/m ² /month
		Total Solids	8.54	g/m ² /month
Monitoring Point 4 (Site DD10)	08/02/22	Insoluble Solids	2.47	g/m ² /month
		Ash	0.89	g/m ² /month
		Soluble Matter	3.12	g/m ² /month
		Total Solids	5.59	g/m ² /month
November 2021				
Monitoring Point 1 (Site 1A)	23/12/21	Insoluble Solids	1.41	g/m ² /month
		Ash	0.90	g/m ² /month
		Soluble Matter	0.29	g/m ² /month
		Total Solids	1.70	g/m ² /month
Monitoring Point 2 (Site 2A)	23/12/21	Insoluble Solids	1.18	g/m ² /month
		Ash	0.82	g/m ² /month
		Soluble Matter	0.26	g/m ² /month
		Total Solids	1.44	g/m ² /month
Monitoring Point 3 (Site DD2)	23/12/21	Insoluble Solids	0.92	g/m ² /month
		Ash	0.55	g/m ² /month
		Soluble Matter	1.15	g/m ² /month
		Total Solids	2.06	g/m ² /month
Monitoring Point 4 (Site DD10)	23/12/21	Insoluble Solids	1.36	g/m ² /month
		Ash	0.80	g/m ² /month
		Soluble Matter	0.42	g/m ² /month
		Total Solids	1.79	g/m ² /month
October 2021				
Monitoring Point 1 (Site 1A)	30/11/21	Insoluble Solids	1.55	g/m ² /month
		Ash	1.04	g/m ² /month
		Soluble Matter	1.93	g/m ² /month
		Total Solids	3.47	g/m ² /month
Monitoring Point 2 (Site 2A)	30/11/21	Insoluble Solids	3.29	g/m ² /month
		Ash	0.84	g/m ² /month
		Soluble Matter	2.70	g/m ² /month
		Total Solids	5.99	g/m ² /month
Monitoring Point 3 (Site DD2)	30/11/21	Insoluble Solids	1.69	g/m ² /month
		Ash	1.09	g/m ² /month
		Soluble Matter	1.98	g/m ² /month

Dunmore Quarry Environmental Monitoring Report

		Total Solids	3.66	g/m ² /month	
Monitoring Point 4 (Site DD10)	30/11/21	Insoluble Solids	3.87	g/m ² /month	
		Ash	3.29	g/m ² /month	
		Soluble Matter	5.00	g/m ² /month	
		Total Solids	8.86	g/m ² /month	
September 2021					
Monitoring Point 1 (Site 1A)	10/11/21	Insoluble Solids	ND	g/m ² /month	Glass bottle broken, no data available.
		Ash	ND	g/m ² /month	
		Soluble Matter	ND	g/m ² /month	
		Total Solids	ND	g/m ² /month	
Monitoring Point 2 (Site 2A)	10/11/21	Insoluble Solids	1.32	g/m ² /month	
		Ash	0.98	g/m ² /month	
		Soluble Matter	2.13	g/m ² /month	
		Total Solids	3.45	g/m ² /month	
Monitoring Point 3 (Site DD2)	10/11/21	Insoluble Solids	1.13	g/m ² /month	
		Ash	0.92	g/m ² /month	
		Soluble Matter	1.72	g/m ² /month	
		Total Solids	2.85	g/m ² /month	
Monitoring Point 4 (Site DD10)	10/11/21	Insoluble Solids	1.71	g/m ² /month	
		Ash	1.45	g/m ² /month	
		Soluble Matter	1.82	g/m ² /month	
		Total Solids	3.53	g/m ² /month	
August 2021					
Monitoring Point 1 (Site 1A)	30/09/21	Insoluble Solids	0.77	g/m ² /month	
		Ash	0.75	g/m ² /month	
		Soluble Matter	0.19	g/m ² /month	
		Total Solids	0.96	g/m ² /month	
Monitoring Point 2 (Site 2A)	30/09/21	Insoluble Solids	1.38	g/m ² /month	
		Ash	0.94	g/m ² /month	
		Soluble Matter	1.08	g/m ² /month	
		Total Solids	2.45	g/m ² /month	
Monitoring Point 3 (Site DD2)	30/09/21	Insoluble Solids	1.20	g/m ² /month	
		Ash	0.84	g/m ² /month	
		Soluble Matter	0.72	g/m ² /month	
		Total Solids	1.91	g/m ² /month	
Monitoring Point 4 (Site DD10)	30/09/21	Insoluble Solids	1.16	g/m ² /month	
		Ash	0.70	g/m ² /month	
		Soluble Matter	0.84	g/m ² /month	
		Total Solids	1.99	g/m ² /month	
July 2021					
Monitoring Point 1 (Site 1A)	13/09/21	Insoluble Solids	1.73	g/m ² /month	
		Ash	0.34	g/m ² /month	
		Soluble Matter	0.10	g/m ² /month	
		Total Solids	1.83	g/m ² /month	
Monitoring Point 2 (Site 2A)	13/09/21	Insoluble Solids	2.61	g/m ² /month	
		Ash	0.64	g/m ² /month	
		Soluble Matter	0.32	g/m ² /month	
		Total Solids	2.92	g/m ² /month	
Monitoring Point 3 (Site DD2)	13/09/21	Insoluble Solids	1.44	g/m ² /month	
		Ash	0.50	g/m ² /month	
		Soluble Matter	0.27	g/m ² /month	
		Total Solids	1.70	g/m ² /month	
Monitoring Point 4 (Site DD10)	13/09/21	Insoluble Solids	2.33	g/m ² /month	
		Ash	0.77	g/m ² /month	
		Soluble Matter	0.08	g/m ² /month	
		Total Solids	2.40	g/m ² /month	
June 2021					
	06/08/21	Insoluble Solids	1.13	g/m ² /month	

Dunmore Quarry Environmental Monitoring Report

Monitoring Point 1 (Site 1A)		Ash	0.58	g/m ² /month	
		Soluble Matter	0.32	g/m ² /month	
		Total Solids	1.45	g/m ² /month	
Monitoring Point 2 (Site 2A)	06/08/21	Insoluble Solids	1.79	g/m ² /month	
		Ash	0.49	g/m ² /month	
		Soluble Matter	0.75	g/m ² /month	
		Total Solids	2.54	g/m ² /month	
Monitoring Point 3 (Site DD2)	06/08/21	Insoluble Solids	2.06	g/m ² /month	
		Ash	0.96	g/m ² /month	
		Soluble Matter	0.50	g/m ² /month	
		Total Solids	2.56	g/m ² /month	
Monitoring Point 4 (Site DD10)	06/08/21	Insoluble Solids	1.95	g/m ² /month	
		Ash	0.61	g/m ² /month	
		Soluble Matter	0.45	g/m ² /month	
		Total Solids	2.41	g/m ² /month	
May 2021					
Monitoring Point 1 (Site 1A)	24/6/21	Insoluble Solids	2.40	g/m ² /month	
		Ash	0.87	g/m ² /month	
		Soluble Matter	0.20	g/m ² /month	
		Total Solids	2.59	g/m ² /month	
Monitoring Point 2 (Site 2A)	24/6/21	Insoluble Solids	2.27	g/m ² /month	
		Ash	0.79	g/m ² /month	
		Soluble Matter	0.30	g/m ² /month	
		Total Solids	2.57	g/m ² /month	
Monitoring Point 3 (Site DD2)	24/6/21	Insoluble Solids	2.62	g/m ² /month	
		Ash	0.48	g/m ² /month	
		Soluble Matter	1.29	g/m ² /month	
		Total Solids	3.92	g/m ² /month	
Monitoring Point 4 (Site DD10)	24/6/21	Insoluble Solids	2.36	g/m ² /month	
		Ash	0.70	g/m ² /month	
		Soluble Matter	0.64	g/m ² /month	
		Total Solids	3.00	g/m ² /month	
April 2021					
Monitoring Point 1 (Site 1A)	28/05/21	Insoluble Solids	0.98	g/m ² /month	
		Ash	0.91	g/m ² /month	
		Soluble Matter	0.24	g/m ² /month	
		Total Solids	1.22	g/m ² /month	
Monitoring Point 2 (Site 2A)	28/05/21	Insoluble Solids	1.68	g/m ² /month	
		Ash	1.66	g/m ² /month	
		Soluble Matter	0.03	g/m ² /month	
		Total Solids	1.71	g/m ² /month	
Monitoring Point 3 (Site DD2)	28/05/21	Insoluble Solids	1.47	g/m ² /month	
		Ash	0.81	g/m ² /month	
		Soluble Matter	0.98	g/m ² /month	
		Total Solids	2.45	g/m ² /month	
Monitoring Point 4 (Site DD10)	28/05/21	Insoluble Solids	0.93	g/m ² /month	
		Ash	0.88	g/m ² /month	
		Soluble Matter	0.02	g/m ² /month	
		Total Solids	0.95	g/m ² /month	
March 2021					
Monitoring Point 1 (Site 1A)	29/4/21	Insoluble Solids	1.90	g/m ² /month	
		Ash	1.33	g/m ² /month	
		Soluble Matter	3.27	g/m ² /month	
		Total Solids	5.17	g/m ² /month	
Monitoring Point 2 (Site 2A)	29/4/21	Insoluble Solids	2.23	g/m ² /month	
		Ash	1.51	g/m ² /month	
		Soluble Matter	2.75	g/m ² /month	
		Total Solids	4.98	g/m ² /month	

Dunmore Quarry Environmental Monitoring Report

Monitoring Point 3 (Site DD2)	29/4/21	Insoluble Solids	1.62	g/m ² /month
		Ash	0.79	g/m ² /month
		Soluble Matter	0.83	g/m ² /month
		Total Solids	2.45	g/m ² /month
Monitoring Point 4 (Site DD10)	29/4/21	Insoluble Solids	2.79	g/m ² /month
		Ash	1.70	g/m ² /month
		Soluble Matter	4.01	g/m ² /month
		Total Solids	6.80	g/m ² /month
February 2021				
Monitoring Point 1 (Site 1A)	16/4/21	Insoluble Solids	1.31	g/m ² /month
		Ash	1.22	g/m ² /month
		Soluble Matter	1.98	g/m ² /month
		Total Solids	3.29	g/m ² /month
Monitoring Point 2 (Site 2A)	16/4/21	Insoluble Solids	0.94	g/m ² /month
		Ash	0.84	g/m ² /month
		Soluble Matter	2.43	g/m ² /month
		Total Solids	3.37	g/m ² /month
Monitoring Point 3 (Site DD2)	16/4/21	Insoluble Solids	0.96	g/m ² /month
		Ash	0.87	g/m ² /month
		Soluble Matter	3.03	g/m ² /month
		Total Solids	3.99	g/m ² /month
Monitoring Point 4 (Site DD10)	16/4/21	Insoluble Solids	0.85	g/m ² /month
		Ash	0.72	g/m ² /month
		Soluble Matter	1.97	g/m ² /month
		Total Solids	2.81	g/m ² /month
January 2021				
Monitoring Point 1 (Site 1A)	17/3/21	Insoluble Solids	1.24	g/m ² /month
		Ash	0.87	g/m ² /month
		Soluble Matter	3.42	g/m ² /month
		Total Solids	4.66	g/m ² /month
Monitoring Point 2 (Site 2A)	17/3/21	Insoluble Solids	1.12	g/m ² /month
		Ash	0.83	g/m ² /month
		Soluble Matter	0.29	g/m ² /month
		Total Solids	3.15	g/m ² /month
Monitoring Point 3 (Site DD2)	17/3/21	Insoluble Solids	1.36	g/m ² /month
		Ash	1.15	g/m ² /month
		Soluble Matter	3.39	g/m ² /month
		Total Solids	4.75	g/m ² /month
Monitoring Point 4 (Site DD10)	17/3/21	Insoluble Solids	1.25	g/m ² /month
		Ash	1.17	g/m ² /month
		Soluble Matter	3.66	g/m ² /month
		Total Solids	4.91	g/m ² /month
December 2020				
Monitoring Point 1 (Site 1A)	10/2/21	Insoluble Solids	4.17	g/m ² /month
		Ash	2.18	g/m ² /month
		Soluble Matter	5.76	g/m ² /month
		Total Solids	9.93	g/m ² /month
Monitoring Point 2 (Site 2A)	10/2/21	Insoluble Solids	1.94	g/m ² /month
		Ash	1.61	g/m ² /month
		Soluble Matter	2.96	g/m ² /month
		Total Solids	4.84	g/m ² /month
Monitoring Point 3 (Site DD2)	10/2/21	Insoluble Solids	2.39	g/m ² /month
		Ash	0.91	g/m ² /month
		Soluble Matter	3.10	g/m ² /month
		Total Solids	5.49	g/m ² /month
Monitoring Point 4 (Site DD10)	10/2/21	Insoluble Solids	3.56	g/m ² /month
		Ash	1.92	g/m ² /month
		Soluble Matter	1.23	g/m ² /month

Dunmore Quarry Environmental Monitoring Report

		Total Solids	4.79	g/m ² /month	
November 2020					
Monitoring Point 1 (Site 1A)	11/01/21	Insoluble Solids	2.60	g/m ² /month	
		Ash	1.37	g/m ² /month	
		Soluble Matter	0.92	g/m ² /month	
		Total Solids	3.52	g/m ² /month	
Monitoring Point 2 (Site 2A)	11/01/21	Insoluble Solids	1.40	g/m ² /month	
		Ash	0.88	g/m ² /month	
		Soluble Matter	0.42	g/m ² /month	
		Total Solids	1.82	g/m ² /month	
Monitoring Point 3 (Site DD2)	11/01/21	Insoluble Solids	0.72	g/m ² /month	
		Ash	0.12	g/m ² /month	
		Soluble Matter	0.24	g/m ² /month	
		Total Solids	0.96	g/m ² /month	
Monitoring Point 4 (Site DD10)	11/01/21	Insoluble Solids	2.88	g/m ² /month	
		Ash	1.66	g/m ² /month	
		Soluble Matter	1.09	g/m ² /month	
		Total Solids	3.96	g/m ² /month	
October 2020					
Monitoring Point 1 (Site 1A)	01/12/20	Insoluble Solids	1.97	g/m ² /month	
		Ash	1.28	g/m ² /month	
		Soluble Matter	1.22	g/m ² /month	
		Total Solids	3.19	g/m ² /month	
Monitoring Point 2 (Site 2A)	01/12/20	Insoluble Solids	2.80	g/m ² /month	
		Ash	1.30	g/m ² /month	
		Soluble Matter	1.78	g/m ² /month	
		Total Solids	4.57	g/m ² /month	
Monitoring Point 3 (Site DD2)	01/12/20	Insoluble Solids	2.51	g/m ² /month	
		Ash	1.30	g/m ² /month	
		Soluble Matter	2.20	g/m ² /month	
		Total Solids	4.72	g/m ² /month	
Monitoring Point 4 (Site DD10)	01/12/20	Insoluble Solids	0.93	g/m ² /month	
		Ash	0.58	g/m ² /month	
		Soluble Matter	1.03	g/m ² /month	
		Total Solids	1.96	g/m ² /month	
September 2020					
Monitoring Point 1 (Site 1A)	30/10/20	Insoluble Solids	1.66	g/m ² /month	
		Ash	1.27	g/m ² /month	
		Soluble Matter	1.46	g/m ² /month	
		Total Solids	3.13	g/m ² /month	
Monitoring Point 2 (Site 2A)	30/10/20	Insoluble Solids	1.41	g/m ² /month	
		Ash	0.98	g/m ² /month	
		Soluble Matter	1.15	g/m ² /month	
		Total Solids	2.56	g/m ² /month	
Monitoring Point 3 (Site DD2)	30/10/20	Insoluble Solids	1.43	g/m ² /month	
		Ash	1.02	g/m ² /month	
		Soluble Matter	1.19	g/m ² /month	
		Total Solids	2.62	g/m ² /month	
Monitoring Point 4 (Site DD10)	30/10/20	Insoluble Solids	1.40	g/m ² /month	
		Ash	0.97	g/m ² /month	
		Soluble Matter	1.07	g/m ² /month	
		Total Solids	2.47	g/m ² /month	
August 2020					
Monitoring Point 1 (Site 1A)	30/09/20	Insoluble Solids	1.14	g/m ² /month	
		Ash	0.56	g/m ² /month	
		Soluble Matter	1.27	g/m ² /month	
		Total Solids	2.41	g/m ² /month	
	30/09/20	Insoluble Solids	1.84	g/m ² /month	

Dunmore Quarry Environmental Monitoring Report

Monitoring Point 2 (Site 2A)		Ash	1.30	g/m ² /month		
		Soluble Matter	1.44	g/m ² /month		
		Total Solids	3.28	g/m ² /month		
Monitoring Point 3 (Site DD2)	30/09/20	Insoluble Solids	1.19	g/m ² /month		
		Ash	0.80	g/m ² /month		
		Soluble Matter	1.97	g/m ² /month		
		Total Solids	3.16	g/m ² /month		
Monitoring Point 4 (Site DD10)	30/09/20	Insoluble Solids	1.63	g/m ² /month		
		Ash	1.36	g/m ² /month		
		Soluble Matter	0.73	g/m ² /month		
		Total Solids	2.36	g/m ² /month		
July 2020						
Monitoring Point 1 (Site 1A)		Insoluble Solids	2.02	g/m ² /month		Monitoring Point 3 had a measured insoluble solids and ash content above 4 g/m ² /month for July. Despite this elevated reading, the rolling annual average for the insoluble solids fraction was 3.02 g/m ² /month and is therefore compliant with EPL 77 and DA 470-11-2003 limits. During July the wind was predominantly from the W, WSW and SW which <u>is not from the general direction of the Dunmore operations</u> at monitoring point 2 (located S of Dunmore operations).
		Ash	1.44	g/m ² /month		
		Soluble Matter	1.71	g/m ² /month		
		Total Solids	3.73	g/m ² /month		
Monitoring Point 2 (Site 2A)		Insoluble Solids	0.97	g/m ² /month		
		Ash	0.75	g/m ² /month		
		Soluble Matter	0.94	g/m ² /month		
		Total Solids	1.91	g/m ² /month		
Monitoring Point 3 (Site DD2)		Insoluble Solids	4.89	g/m ² /month		
		Ash	4.28	g/m ² /month		
		Soluble Matter	3.51	g/m ² /month		
		Total Solids	8.49	g/m ² /month		
Monitoring Point 4 (Site DD10)		Insoluble Solids	1.69	g/m ² /month		
		Ash	1.03	g/m ² /month		
		Soluble Matter	1.80	g/m ² /month		
		Total Solids	3.49	g/m ² /month		
July 2020						
Monitoring Point 1 (Site 1A)		Insoluble Solids	0.93	g/m ² /month		
		Ash	0.85	g/m ² /month		
		Soluble Matter	0.87	g/m ² /month		
		Total Solids	1.80	g/m ² /month		
Monitoring Point 2 (Site 2A)		Insoluble Solids	0.56	g/m ² /month		
		Ash	0.51	g/m ² /month		
		Soluble Matter	0.65	g/m ² /month		
		Total Solids	1.21	g/m ² /month		
Monitoring Point 3 (Site DD2)		Insoluble Solids	1.03	g/m ² /month		
		Ash	0.70	g/m ² /month		
		Soluble Matter	2.12	g/m ² /month		
		Total Solids	3.15	g/m ² /month		
Monitoring Point 4 (Site DD10)		Insoluble Solids	0.87	g/m ² /month		
		Ash	0.46	g/m ² /month		
		Soluble Matter	0.90	g/m ² /month		
		Total Solids	1.77	g/m ² /month		
May 2020						
Monitoring Point 1 (Site 1A)		Insoluble Solids	1.25	g/m ² /month		
		Ash	0.83	g/m ² /month		
		Soluble Matter	4.31	g/m ² /month		
		Total Solids	5.57	g/m ² /month		
Monitoring Point 2 (Site 2A)		Insoluble Solids	1.09	g/m ² /month		
		Ash	0.83	g/m ² /month		
		Soluble Matter	0.77	g/m ² /month		

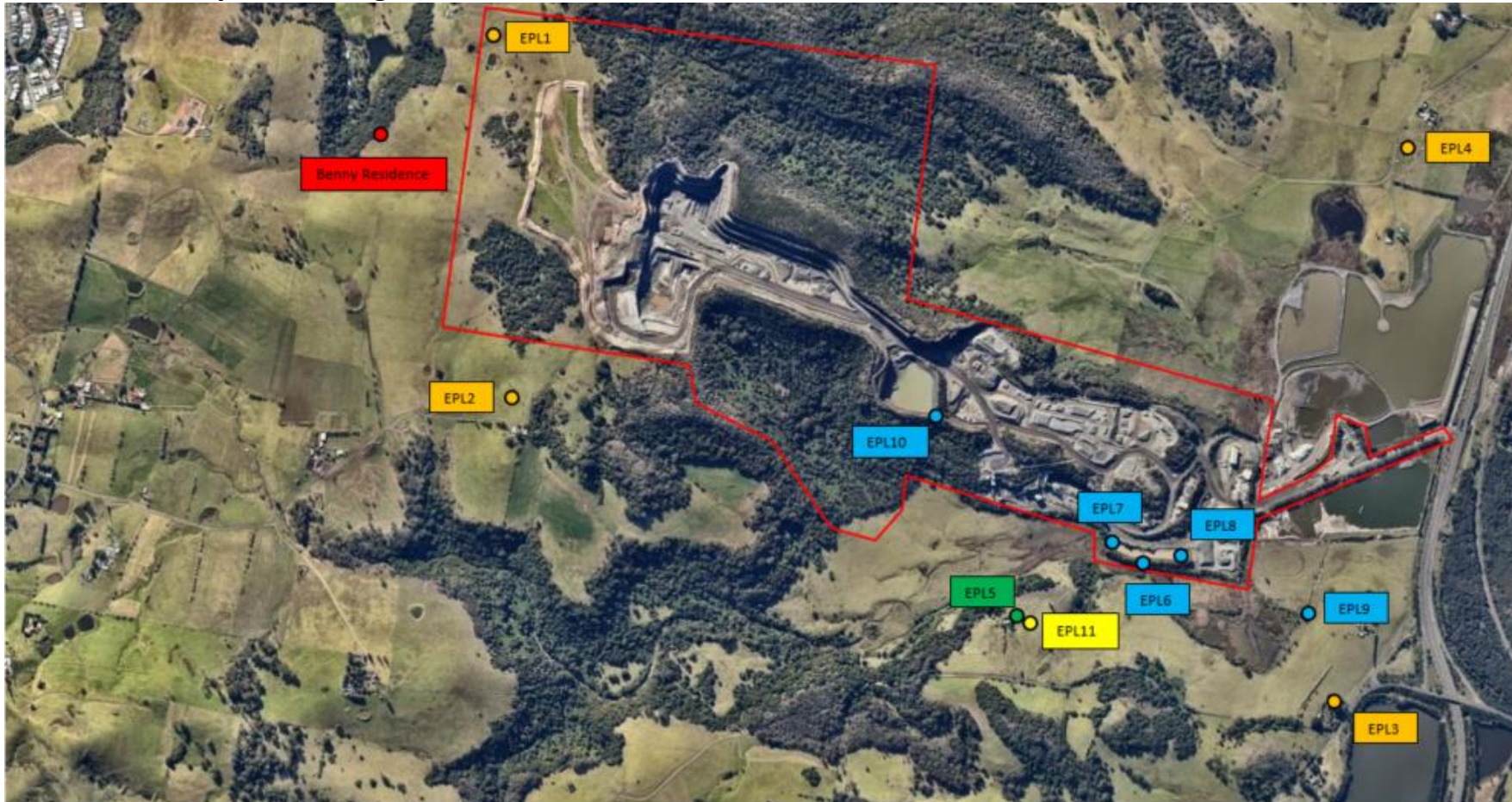
Dunmore Quarry Environmental Monitoring Report

		Total Solids	1.86	g/m ² /month	
Monitoring Point 3 (Site DD2)		Insoluble Solids	1.18	g/m ² /month	
		Ash	1.04	g/m ² /month	
		Soluble Matter	1.09	g/m ² /month	
		Total Solids	2.28	g/m ² /month	
Monitoring Point 4 (Site DD10)		Insoluble Solids	0.79	g/m ² /month	
		Ash	0.67	g/m ² /month	
		Soluble Matter	0.93	g/m ² /month	
		Total Solids	1.72	g/m ² /month	
April 2020					
Monitoring Point 1 (Site 1A)		Insoluble Solids	1.45	g/m ² /month	
		Ash	0.95	g/m ² /month	
		Soluble Matter	0.50	g/m ² /month	
		Total Solids	2.82	g/m ² /month	
Monitoring Point 2 (Site 2A)		Insoluble Solids	4.84	g/m ² /month	
		Ash	2.36	g/m ² /month	
		Soluble Matter	5.23	g/m ² /month	
		Total Solids	10.06	g/m ² /month	
Monitoring Point 3 (Site DD2)		Insoluble Solids	1.69	g/m ² /month	
		Ash	0.95	g/m ² /month	
		Soluble Matter	1.40	g/m ² /month	
		Total Solids	3.09	g/m ² /month	
Monitoring Point 4 (Site DD10)		Insoluble Solids	1.40	g/m ² /month	
		Ash	0.85	g/m ² /month	
		Soluble Matter	1.44	g/m ² /month	
		Total Solids	2.84	g/m ² /month	
March 2020					
Monitoring Point 1 (Site 1A)		Insoluble Solids	2.03	g/m ² /month	
		Ash	1.56	g/m ² /month	
		Soluble Matter	3.47	g/m ² /month	
		Total Solids	5.50	g/m ² /month	
Monitoring Point 2 (Site 2A)		Insoluble Solids	1.75	g/m ² /month	
		Ash	1.11	g/m ² /month	
		Soluble Matter	1.38	g/m ² /month	
		Total Solids	3.12	g/m ² /month	
Monitoring Point 3 (Site DD2)		Insoluble Solids	1.81	g/m ² /month	
		Ash	1.05	g/m ² /month	
		Soluble Matter	1.86	g/m ² /month	
		Total Solids	3.66	g/m ² /month	
Monitoring Point 4 (Site DD10)		Insoluble Solids	1.85	g/m ² /month	
		Ash	1.20	g/m ² /month	
		Soluble Matter	0.92	g/m ² /month	
		Total Solids	2.77	g/m ² /month	
February 2020					
Monitoring Point 1 (Site 1A)		Insoluble Solids	6.77	g/m ² /month	Currowan Bushfire burning within the South Coast region
		Ash	3.11	g/m ² /month	
		Soluble Matter	7.84	g/m ² /month	
		Total Solids	14.60	g/m ² /month	
Monitoring Point 2 (Site 2A)		Insoluble Solids	13.25	g/m ² /month	Currowan Bushfire burning within the South Coast region
		Ash	9.90	g/m ² /month	
		Soluble Matter	11.83	g/m ² /month	
		Total Solids	25.08	g/m ² /month	
Monitoring Point 3 (Site DD2)		Insoluble Solids	4.60	g/m ² /month	Currowan Bushfire burning within the South Coast region
		Ash	3.06	g/m ² /month	
		Soluble Matter	7.34	g/m ² /month	
		Total Solids	11.94	g/m ² /month	
Monitoring Point 4 (Site DD10)		Insoluble Solids	3.64	g/m ² /month	
		Ash	2.26	g/m ² /month	

Dunmore Quarry Environmental Monitoring Report

		Soluble Matter	5.36	g/m ² /month	Currowan Bushfire burning within the South Coast region
		Total Solids	9.00	g/m ² /month	
Further Historical monitoring data relating to dust can be found in the associated Annual Reviews for each year. Location of the Dunmore Quarry Annual Reviews can be found at https://www.boral.com.au/locations/boral-dunmore-operations					

Dunmore Quarry Monitoring Locations.



LEGEND

- | | | | |
|------------------------|----------------------------------|---------------------------------|-----------------------------------|
| Site Boundary | Water Discharge Monitoring Point | Deposited Dust Monitoring Point | Weather Analysis Monitoring Point |
| Blast Monitoring Point | High Volume Air Sampling Point | | |