



Build something great™

# Pollution Incident Response Management Plan

## JOHNS RIVER QUARRY

Version Twelve: August 2023



## DOCUMENT CONTROL SHEET

Ver.	Date	Prepared by	Approved By	Revision Details
01	20 Aug 2012	Rod Johnson	Rod Johnson	Document Created
02	15 Apr 2013	Nathan Jeffery	Rod Johnson	Document control sheet added Format Changes Added additional maps Chemical volumes stored onsite added
03	19 Nov 2013	Nathan Jeffery	Rod Johnson	Updated staff contact details Updated Incident Reporting SOP reference Added Immediate reporting contact sheet
04	7 Aug 2015	Nathan Jeffery	Nathan Jeffery	Updated staff contact details Updated risk assessment with 5x5 matrix
05	6 Oct 2016	Nathan Jeffery	Nathan Jeffery	Updated names and contact details Updated Council name and Phone No's
06	14 Sep. 17	Ronnie Lawton	Ronnie Lawton	Updated names and contact details
07	10 Sep 2018	Peter Scioscia	Peter Scioscia	Updated names and contact details
08	2 Oct 2019	Peter Scioscia	Peter Scioscia	Updated names and contact details
09	8 July 2020	Rod Johnson	Rod Johnson	Update contact details Review Risk Assessment
10	July 2021	Rod Johnson	Rod Johnson	Update contact details Review Risk Assessment
11	July 2022	Rod Johnson	Rod Johnson	Update contact details Review Risk Assessment
12	August 2023	Ben Williams	Ben Williams	Update contact details Review Risk Assessment

Current Version	Date Implemented	PIRMP Test Schedule	Date for Next Review
12	August 2023	12 months	August 2024

## TABLE OF CONTENTS

1.	PURPOSE.....	4
2.	LEGISLATIVE REQUIREMENTS.....	4
3.	DEFINITION OF A POLLUTION EVENT.....	4
4.	SCOPE .....	6
5.	POTENTIAL POLLUTING SUBSTANCES.....	6
6.	ROLES AND RESPONSIBILITIES.....	10
7.	INTERNAL POLLUTION INCIDENT REPORTING.....	11
8.	EXTERNAL POLLUTION INCIDENT REPORTING.....	12
9.	POLLUTION INCIDENT AUTHORITY CONTACT LIST.....	13
10.	INCIDENT RESPONSE TRAINING.....	14
11.	PIRMP AUDIT.....	15
12.	PIRMP REVIEW.....	15
12.1	EVENT BASED.....	15
12.2	TIME BASED.....	15
	APPENDIX 1: RISK ASSESSMENT ON POTENTIAL IMPACTS...	16
	APPENDIX 2: PIRMP RESPONSE ACTIONS.....	19
	APPENDIX 3: JOHNS RIVER QUARRY LOCATION MAP.....	31
	APPENDIX 4: JOHNS RIVER QUARRY REFERENCE MAP.....	32
	APPENDIX 5: JOHNS RIVER QUARRY AFFECTED AREA MAP...	33
	APPENDIX 6: POLLUTION INCIDENT NOTIFICATION LOG.....	34
	APPENDIX 7: IMMEDIATE REPORTING CONTACT SHEET.....	36

## 1. PURPOSE

The purpose of the Johns River Quarry Pollution Incident Response Plan is to:

- Provide direction to the staff at Johns River Quarry in responding to pollution incidents at the Johns River operations;
- Ensure timely communication about a pollution incident is provided to staff at the premises, the Environment Protection Authority (EPA), other relevant authorities specified in the Protection of the Environment Legislation Amendment Act (POELA Act) (including Mid coast Council, NSW Ministry of Health, Work Cover NSW, and Fire and Rescue NSW) and persons outside the operations who may be affected by the impacts of a pollution incident;
- Minimise and control the risk of a pollution incident at Johns River Quarry by identifying key risks and planned actions to minimise and manage those risks;
- Detail the training requirements for this plan, identifying persons responsible for implementing it, and ensuring that the plan is regularly tested for accuracy, currency and suitability.

## 2. LEGISLATIVE REQUIREMENTS

The specific requirements for a PIRMP are set out in Part 5.7A of the POEO Act and the Protection of the Environment Operations (General) Regulation 2009 (POEO(G) Regulation). In summary, this provision requires the following:

- All holders of environment protection licences must prepare a pollution incident response management plan (section 153A, POEO Act).

- The plan must include the information detailed in the POEO Act (section 153C) and be in the form required by the POEO(G) Regulation (clause 98B).
- Licensees must keep the plan at the premises to which the environment protection licence relates (section 153D, POEO Act).
- Licensees must test the plan in accordance with the POEO(G) Regulation (clause 98E).
- if a pollution incident occurs in the course of an activity so that material harm to the environment is caused or threatened, licensees must immediately implement the plan (section 153F, POEO Act)

### 3. DEFINITION OF 'POLLUTION INCIDENT'

The definition of a pollution incident is:

*“pollution incident means an incident or set of circumstances during or as a consequence of which there is or is likely to be a leak, spill or other escape or deposit of a substance, as a result of which pollution has occurred, is occurring or is likely to occur. It includes an incident or set of circumstances in which a substance has been placed or disposed of on premises, but it does not include an incident or set of circumstances involving only the emission of any noise.”*

A pollution incident is required to be notified if there is a risk of ‘material harm to the environment’, which is defined in section 147 of the POEO Act as:

a) harm to the environment is material if:

- it involves actual or potential harm to the health or safety of human beings or to ecosystems that is not trivial, or

ii. it results in actual or potential loss or property damage of an amount, or amounts in aggregate, exceeding \$10,000 (or such other amount as is prescribed by the regulations), and

b) loss includes the reasonable costs and expenses that would be incurred in taking all reasonable and practicable measures to prevent, mitigate or make good harm to the environment.

Johns River Quarry is now required to report pollution incidents immediately to the EPA, NSW Health, Fire and Rescue NSW, WorkCover NSW and the local council.

## 4. SCOPE

This PIRMP must be followed by employees, contractors and visitors of Johns River Quarry, to assist in the early response to and reporting of a pollution incident.

## 5. POTENTIAL POLLUTING SUBSTANCES

The main hazards to human health and the environment at Johns River Quarry are included in the following table.

LIST OF POLLUTING SUBSTANCE STORAGES/USES AT SITE: INITIAL ASSESSMENT (all Chemicals listed in this sheet are to be subjected to a risk assessment)							
Site Name: Johns River Quarry					Responsible Person: Quarry Manager		Date: 20/7/2022
Name / description	Covered under Haz Chemicals/MSDS?	Amount stored	Location of storage	Map reference	Need for early warning <sup>1</sup>	Current controls	See Risk Ass & PIRMP Response Action (see Below)
<b>CHEMICALS/FUELS/LUBRICANTS (raw materials and products which can cause pollution)</b>							
Uncontrolled loss of Diesel or other hydrocarbon based products that could result in material harm to the environment or human health	Class 3 & Class 2	20 000 ltrs Packaged goods up to 3 000 ltrs  Waste Oil Tank 2000 ltrs	Diesel Storage Area Oil Storage Shed at Workshop Maintenance Workshop	Ref No #1 Ref No #2	N/A	<ul style="list-style-type: none"> <li>• Bunding</li> <li>• PMP</li> <li>• Training</li> <li>• Spill Kits</li> <li>• Flammable Cabinet</li> <li>• SOP</li> <li>• Inductions</li> <li>• Fire Fighting Equipment</li> <li>• Security</li> </ul>	Incident #1
<b>MATERIALS (eg stockpiles, silos, bulk solids etc)</b>							
Excessive airborne dust from stockpiled material, mobile plant, stabilment silos or traffic areas causing material harm to the environment or significant	N/A	Variable stockpiles across stockpile areas  60 Tonne Stabilment silo	Dedicated onsite stockpiles areas  Pugmill Stabilment Silo	Ref No #8 & #9	N/A	<ul style="list-style-type: none"> <li>• Water sprays</li> <li>• Water Cart</li> <li>• Maintain manageable levels</li> <li>• Fully enclosed silo structure</li> <li>• Silo filters</li> <li>• Security</li> </ul>	Incident #2

<sup>1</sup> Early warnings relate to informing neighbours who may be affected by the emission of this substance. If this substance is of a type and quantity which may reach neighbours then early warning assessment of actions is required to be undertaken.

impact to the community							
<b>AQUEOUS (eg dams, wastewater tanks, other water storage area)</b>							
Uncontrolled release of sediment laden water from storage dams causing material harm to the environment	pH TSS NTS OC	Variable refer to Water Management Plan	refer to Water Management Plan	Ref No #6	N/A	<ul style="list-style-type: none"> <li>Continue to use for dust suppression</li> <li>Ensure pumps are maintained through scheduled maintenance</li> <li>Discharge monitoring</li> </ul>	Incident #3
<b>Blast Fume/Odour (e.g. fumes and odour associated with blasting)</b>							
Uncontrolled release of Blast fumes and/or odour (NOx) from blast practices causing significant impact to the surrounding community	Odour NOx	NA	Blasting occurs within the Production Pit		NA	<ul style="list-style-type: none"> <li>Boral doesn't sleep shots as normal operations</li> <li>Wet holes are not slept</li> <li>Holes loaded and fired on same day where possible</li> <li>Pit is isolated from community</li> </ul>	Incident #4



## 6. ROLES AND RESPONSIBILITIES

<b>Position</b>	<b>Responsibility</b>
<i>Employees and Contractors</i>	<p>Following the procedures outlined in the PIRMP and related documents</p> <p>Immediately alerting Supervisor or Team Leader of any environmental incidents or near-misses.</p>
<i>Team Leaders / Front Line Supervisors</i>	<p>Following the procedures outlined in the PIRMP and related documents</p> <p>Immediately alerting Site/Quarry Manager or, in case of their unavailability, Environmental Representative or Environment Manager of any potentially material environmental incidents or near-misses.</p> <p>Conducting incident investigations.</p>
<i>Site / Operations Manager and/or Site Environmental Coordinator and/or Environment Manager</i>	<p>Authorisation of the PIRMP</p> <p>Administration, maintenance and implementation of the PIRMP</p> <p>Assessing whether the incident has caused or threatens “material environmental harm” and, if so, immediately notifying all Appropriate Regulatory Authorities.</p> <p>Ensuring that investigations are undertaken to a level corresponding to the level of risk and impact.</p>

## 7. INTERNAL POLLUTION INCIDENT REPORTING

Any pollution incident satisfying the **material harm** threshold must be immediately reported to relevant statutory authorities by either the Site/Operations Manager, or Environment Manager.

In cases where “material harm” level cannot be immediately assessed or insufficient information comes to hand on the severity of the incident, the general advice is to err on the side of caution and notify the Relevant Authorities with a qualification that the situation could not yet be fully assessed.

Until further notice the following procedure needs to be followed:

1. When a pollution incident occurs, a person who has become aware of it must immediately bring it to the attention of his/her immediate Supervisor or Manager
2. If necessary, first ring “ 000 ” for Emergency Services
- 3 At least one of the following BCM personnel must be contacted **immediately**:

Name	Function	Phone number	Mobile number
	Quarry Manager		
	Quarry Supervisor		
	HS Business partner		
	Environment Business Partner		
	Snr Environmental Business Partner		

4. The Quarry Manger or in case of their unavailability one of the Senior Management personnel listed above, is to **immediately** notify all Appropriate Regulatory Authorities specified in Section 4.3.
5. In borderline situations, where the exceedance of the trigger level of “material harm” of a pollution incident may not be clear, a quick assessment including consultation with Boral environmental personnel should be undertaken to help the decision whether to notify or not.

6. Boral's Senior Management must be informed promptly of the fact of immediate notification to the Authorities. This includes environmental personnel listed above, as well as XXX, XXX and XXX.

## 8. EXTERNAL POLLUTION INCIDENT REPORTING

As the legislation requires that notification must be done immediately upon becoming aware of the pollution incident, it is unlikely that a detailed picture will be available for reporting. Notwithstanding, it seems that some of the Government Authorities prepared a detailed questionnaire which is being filled at the time of this initial notification. Under the stress of incident handling it could be easy to provide a hasty, inaccurate estimate of the situation when answering these questions.

Therefore, the notification should be restricted to the facts known and nothing should be assumed or guessed. The details will be provided to the asking Authority later when more information comes to hand.

The initial notification should include as much of the following information (if known) as possible:

- location and time of the pollution incident
- type of the incident (spill, fire, unlicensed harmful discharge, etc)
- assessed level of incident gravity: "it seems to be..." (e.g. "a relatively minor spill"; "major fire", "explosion limited to one building", etc.)
- whether the Emergency Services have been required to attend.

Unless known for a fact, the answers to other questions should be politely deferred until a better assessment of the situation can be made.

The Boral person who is responsible for notifying the Authorities (Site/Operations Manager or Environment Manager) about the incident must prepare a Notification Log (a suitable form is attached) with the details of time of notifications and the persons who took to the call. The Authorities are expected to log the calls but early indications are that this is not always the case.

Notification of all Appropriate Government Authorities (at least 5 entities) may take considerable time. Delays may be experienced connecting to the right person or no contact may be possible after hours. All such instances should be recorded in the Notification Log.

## 9. POLLUTION INCIDENT AUTHORITY CONTACT LIST

<b>Government Authority - compulsory notifications</b>	<b>Emergency notification phone number</b>
EPA – Environment Line	131 555
Fire and Rescue NSW (FRNSW)	1300 729 579
Midcoast Council	02 6592 5399 AH Emergency: 0408 652 662
Public Health Unit (North Coast AHS) – Port Macquarie NC PHU	HealthLink (24 hr)- 1800 063 635 Head Office- Port Macquarie- 6588 2750
SafeWork NSW	131050 Company ABN if asked: 51 000 187 002
<b>Government Authority - ring if relevant</b>	<b>Emergency notification phone number</b>
Police & Ambulance	000
Roads and Maritime Services (road spills)	132 701
Natural Resources Access Regulator (NRAR)	1800 633 362
Bush Fire Control Officer	1800 049 933
Poisons Information Centre	131 126
Essential Energy (power line emergencies)	13 20 80

Communication with the local community may also be undertaken depending on the circumstances of the pollution incident. Johns River Quarry would consider the following options for providing Early Warning and ongoing information to the community on pollution incidents:

- Direct phone contact with any local residents directly impacted by the pollution incident
- Letter Box drops of incident information and site contacts to local residents impacted by the pollution incident
- The inclusion of incident details within the relevant Quarry Community Newsletter

The Stakeholder Relations Manager can assist in the process of communicating with the community, as per the Stakeholder Engagement Plan for the site.

## 10. INCIDENT RESPONSE TRAINING

Johns River Quarry will implement the Pollution Incident Response Management Plan by training or providing information to relevant employees and contractors in relevant areas of the Plan.

Training or information will be provided on the following;

- The contents and intent of this PIRMP,
- The roles and responsibilities of site staff in relation to this PIRMP
- Spill response procedures;
- General environmental awareness; and / or
- Hazardous materials awareness.

## 11. PIRMP AUDIT

The objectives of an audit are to maintain compliance with this plan. Internal audits of this Plan will be undertaken every 3 years.

Routine testing of the plan will be conducted annually, and can be completed through the following methods:

- Simulated environmental emergency, or
- Desktop simulations.

## 12. PIRMP REVIEW

Revisions are to be coordinated by the Site Manager and Environmental Representative.

The objectives of a review are:

- To maintain compliance with the statutory requirements, and
- To identify opportunities for improvement in the Plan, and reduce the risk to human health and the environment

### *12.1. EVENT BASED*

Events which may trigger a review of this Plan or its associated documents include:

- Within 1 month of reporting to the nominated parties in accordance with the plan, after a pollution incident, or
- Modification/Improvement to the system

### *12.2. TIME BASED*

Johns River Quarry will review this management plan routinely every 12 months. The Plan review will include:

- This Document, and
- Legislation, Approval and Licence changes.

## APPENDIX 1.

### RISK ASSESSMENT on POTENTIAL IMPACTS

#### Hazard and Likelihood Risk Assessment and Corrective Control Measures

Site: Johns River Quarry			Responsible Person: Quarry Manager/Supervisor			Review Date: July 2022		
Name / ref of pollutant/ chemicals	Description of Hazard / Incident leading to hazard	Consequence	Likely hood	Risk	Impact on neighbours <sup>2</sup>	Control Measures Corrective Action Coverage under other Plans	Responsible person	Action date
Diesel	<b>Incident #1</b> Uncontrolled loss of Diesel or other hydrocarbon based products that could result in material harm to the environment or human health	1	2	L	N	Consequence: (Incidental): Failure resulting in loss of all or substantial volume of tanks would be captured entirely by existing primary bund with no release to soil or water.  Likelihood: (Unlikely): Due to location within bunds, damage to tanks is unlikely to occur from external equipment. In addition tanks are maintained in good structural integrity with low risk of failure through corrosion.	As per PIRMP action plan	When required
Aggregate stockpiles	<b>Incident #2</b> Excessive airborne dust from stockpiled material, mobile plant, stabilment silos or traffic areas causing material harm to	2	2	L	Y	Consequence: (Minor): Excessive dust from stockpile during high winds causing nuisance to surrounding area.  Likelihood :(Unlikely): Stockpiles are maintained to a manageable level on a monthly basis. Use of water sprinklers and water cart onsite during windy periods. Stabilment is stored in solid silo with appropriate dust controls	As per PIRMP action plan	When required

<sup>2</sup> If the incident may impact on neighbours then it will need to trigger the early warnings assessment and actions

	the environment or significant impact to the community							
<b>Sediment Dams</b>	<b>Incident #3</b> Uncontrolled release of sediment laden water from storage dams causing material harm to the environment	3	2	M	N	<p>Consequence: (moderate): Catastrophic failure of one or more sediment dams are likely to result in off-site impacts to water courses which would predominantly reduce water quality over a short period of time. As such, impact to the environment/human health is not considered to be significant.</p> <p>Likelihood: (unlikely): Dams are frequently monitored and inspected for levels and integrity.</p> <p>Risk Assessment = Moderate Vs Unlikely = M</p> <p><b>Note:</b> For PIRMP purposes overflow events during extreme wet weather will be reported under POEO Licence obligations and not Immediate Reporting.</p>	As per PIRMP action plan	When required
<b>Blast Fume</b>	<b>Incident #4</b> Uncontrolled release of Blast fumes and/or odour (NOx) from blast practices causing significant impact to the surrounding community	2	2	L	Y	<p>Consequence: (minor): Any exposure to blast fume would be short term and dependent on weather conditions. Quarry is situated in rural area separated by distance from closest neighbours</p> <p>Likelihood :( unlikely): Boral does not sleep shots for any extended period of time and due to nature of resource water is not typically experienced in blast holes. Quarry is isolated from surrounding residents via distance</p>	As per PIRMP action plan	When required



## APPENDIX 2.

# PIRMP RESPONSE ACTIONS

## Incident No 1

<b>Incident #1</b>	<p><b>Uncontrolled loss of Diesel or other hydrocarbon based products that could result in material harm to the environment or human health</b></p> <p>Actions Required:</p> <ul style="list-style-type: none"> <li>• Contact all relevant people/department (refer to Immediate Reporting Contact Sheet)</li> <li>• Ensure bunds are capturing full volume of diesel</li> <li>• Ensure bund integrity is sound throughout the entire period of incident (i.e. periodic inspections)</li> <li>• Contact service provider (Caltex No. 1800033111 or Transpacific 02 96007185) to pump-out bund contents</li> <li>• Area to be restricted to Incident Response Personnel</li> <li>• Ensure spill kit available for any release from bund</li> <li>• If any release from bund onto unsealed soil/surface water - Environmental Consultants to be engaged to investigate &amp; remediate area.</li> <li>• Repair/replace tanks</li> <li>• Refuel tanks</li> </ul> <p>Inspect bund for ongoing serviceability</p>
<b>Alarm raising</b>	Any personnel involved or witnessing incident to report to immediate supervisor and PIRMP actions to be implemented.
<b>Emergency Controller</b>	<ul style="list-style-type: none"> <li>• Quarry Manager</li> <li>• Call service provider (Quarry Manager)</li> <li>• Spill Kit manager (Supervisor)</li> <li>• Periodic inspections and update reporting of site and bund (Quarry Manager)</li> </ul>
<b>Scale of incident</b>	Incident would be restricted to Diesel/Precoat storage area with minimal external impact, however, potential for bund overflow or failure may result in soil and surface water contamination that will require specialist investigation/remediation.
<b>Evacuate</b>	Only if fire or explosion potential exists. Quarry Manager and any advice provided by Fire Dept. as part of attendance after immediate notification.
<b>Communications</b>	<p><b>Internal:</b> Quarry Manager</p> <ul style="list-style-type: none"> <li>• Environmental Manager NSW / ACT and Local Environmental Business Partner</li> </ul> <p><b>External mandatory:</b> Immediate Reporting Contact Sheet to be used</p> <p><b>External non-mandatory:</b> N/A</p>
<b>Rescuer / respondent + safety checks</b>	As per Site Emergency Plan or Fire Department as part of Immediate Reporting
<b>Rescue + First Aid</b>	As per Site Emergency Plan or Fire Department as part of Immediate Reporting
<b>Clean up and Waste disposal</b>	Service Provider to dispose of diesel and advise on required clean-up.
<b>Reporting and re-preparedness</b>	See: GRP-HSEQ-3-02 Incident Reporting Investigation and Action Management GRP-HSEQ-8-07 Spill Management

## Incident No 2

<b>Incident #2</b>	<p style="color: red;">Excessive airborne dust from stockpiled material, mobile plant, stabilment silos or traffic areas causing material harm to the environment or significant impact to the community</p> <p>Actions Required:</p> <ul style="list-style-type: none"> <li>• Employees, Contractor/Visitor to notify site representative of issue immediately. (induction)</li> <li>• Daily monitoring to be undertaken to assess weather and site conditions</li> <li>• Contact all relevant people/department (refer to Immediate Reporting Contact Sheet)</li> <li>• Dust suppression activity to commence immediately on stockpiles</li> </ul>
<b>Alarm raising</b>	Any personnel involved or witnessing incident to report to immediate supervisor and PIRMP actions to be implemented.
<b>Emergency Controller</b>	<ul style="list-style-type: none"> <li>• Quarry Manager</li> <li>• Call service provider (Quarry Manager)</li> <li>• Spill Kit manager (Supervisor)</li> <li>• Periodic inspections and update reporting of site and surrounding area (Quarry Manager)</li> </ul>
<b>Scale of incident</b>	Incident would be localised to the area surrounding stockpile area, with minimal external impact.
<b>Evacuate</b>	Only if fire or explosion potential exists. Quarry Manager and any advice provided by Fire Dept. as part of attendance after immediate notification.
<b>Communications</b>	<p><b>Internal:</b></p> <ul style="list-style-type: none"> <li>• Quarry Manager</li> <li>• Environmental Manager NSW / ACT and / or Environmental Business Partner</li> </ul> <p><b>External mandatory:</b></p> <ul style="list-style-type: none"> <li>• Immediate Reporting Contact Sheet to be used</li> </ul> <p><b>External non-mandatory:</b> N/A</p>
<b>Rescuer / respondent + safety checks</b>	As per Site Emergency Plan or Fire Department as part of Immediate Reporting
<b>Rescue + First Aid</b>	As per Site Emergency Plan or Fire Department as part of Immediate Reporting
<b>Clean up and Waste disposal</b>	Service Provider to dispose of diesel and advise on required clean-up.
<b>Reporting and re-preparedness</b>	See: GRP-HSEQ-3-02 Incident Reporting Investigation and Action Management GRP-HSEQ-8-06 Air Management

## Incident No 3

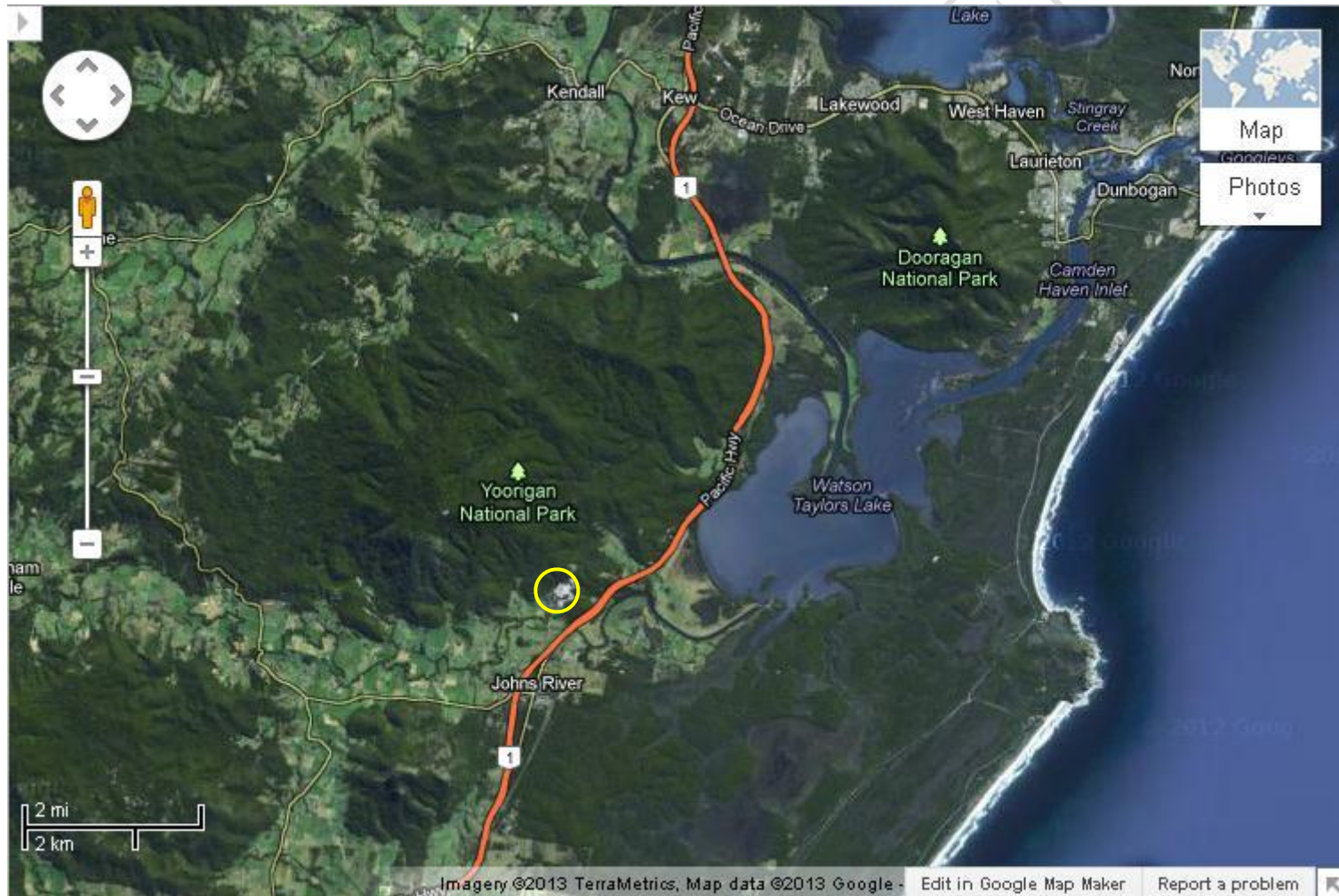
<b>Incident #3</b>	<p><b>Uncontrolled release of sediment laden water from storage dams causing material harm to the environment</b></p> <p>Actions Required:</p> <ul style="list-style-type: none"> <li>• Contact all relevant people/department (refer to Immediate Reporting Contact Sheet)</li> <li>• Ensure bund integrity is sound throughout the entire period of incident (i.e. periodic inspections)</li> <li>• Contact local neighbours if going to be inundated by rise of water</li> <li>• Area to be restricted to Incident Response Personnel</li> <li>• If any release from site onto unsealed soil/surface water - Environmental Consultants to be engaged to investigate and remediate contamination if any</li> <li>• Contact local contractor to rebuild dams immediately</li> </ul>
<b>Alarm raising</b>	Any personnel involved or witnessing incident to report to immediate supervisor and PIRMP actions to be implemented.
<b>Emergency Controller</b>	<ul style="list-style-type: none"> <li>• Quarry Manager</li> <li>• Call service provider (Quarry Manager)</li> <li>• Spill Kit manager (Supervisor)</li> <li>• Periodic inspections and update reporting of site and bund (Quarry Manager)</li> </ul>
<b>Scale of incident</b>	Catastrophic failure of one or more sediment dams are likely to result in off-site impacts to water courses which would predominantly reduce water quality over a short period of time. As such, impact to the environment/human health is not considered to be significant.
<b>Evacuate</b>	Only if flood potential exists. Quarry Manager and any advice provided by Fire Dept. as part of attendance after immediate notification.
<b>Communications</b>	<p><b>Internal:</b></p> <ul style="list-style-type: none"> <li>• Quarry Manager</li> <li>• Environmental Manager NSW / ACT and Environmental Business Partner</li> </ul> <p><b>External mandatory:</b></p> <ul style="list-style-type: none"> <li>• Immediate Reporting Contact Sheet to be used</li> </ul> <p><b>External non-mandatory:</b> N/A</p>
<b>Rescuer / respondent + safety checks</b>	As per Site Emergency Plan or Fire Department as part of Immediate Reporting
<b>Rescue + First Aid</b>	As per Site Emergency Plan or Fire Department as part of Immediate Reporting
<b>Clean up and Waste disposal</b>	Consultants to be contacted to advise on required clean-up.
<b>Reporting and re-preparedness</b>	See: GRP-HSEQ-3-02 Incident Reporting Investigation and Action Management GRP-HSEQ-8-02 Water Management

## Incident No 4

<b>Incident #4</b>	<p><b>Uncontrolled release of Blast fumes and/or odour (NOx) from blast practices causing significant impact to the surrounding community</b></p> <p>Actions Required:</p> <ul style="list-style-type: none"> <li>• Contact all relevant people/department (refer to Immediate Reporting Contact Sheet)</li> <li>• Area to be restricted to Incident Response Personnel</li> <li>• If prevailing winds pushing blast fume towards neighbours contact them immediately</li> <li>• Ensure blast service provider is aware of situation and advises accordingly</li> </ul>
<b>Alarm raising</b>	Any personnel involved or witnessing incident to report to immediate supervisor and PIRMP actions to be implemented.
<b>Emergency Controller</b>	<ul style="list-style-type: none"> <li>• Quarry Manager</li> <li>• Call service provider (Quarry Manager)</li> <li>• Periodic inspections and update reporting of site and surrounding area (Quarry Manager)</li> </ul>
<b>Scale of incident</b>	Incident would be localised to the area with external impact due to prevailing weather conditions
<b>Evacuate</b>	Only if fire or explosion potential exists or staff exposed to fume and health is of concern. Stay indoors. Quarry Manager and any advice provided by Fire Dept. as part of attendance after immediate notification.
<b>Communications</b>	<p><b>Internal:</b></p> <ul style="list-style-type: none"> <li>• Quarry Manager</li> <li>• Environmental Manager NSW / ACT and / or Environmental Business Partner</li> </ul> <p><b>External mandatory:</b></p> <ul style="list-style-type: none"> <li>• Immediate Reporting Contact Sheet to be used</li> </ul> <p><b>External non-mandatory:</b> N/A</p>
<b>Rescuer / respondent + safety checks</b>	As per Site Emergency Plan or Fire Department as part of Immediate Reporting
<b>Rescue + First Aid</b>	As per Site Emergency Plan or Fire Department as part of Immediate Reporting
<b>Clean up and Waste disposal</b>	Service provider to advise on any clean-up or disposal aspects
<b>Reporting and re-preparedness</b>	See: GRP-HSEQ-3-02 Incident Reporting Investigation and Action Management

### APPENDIX 3.

## JOHNS RIVER QUARRY LOCATION MAP



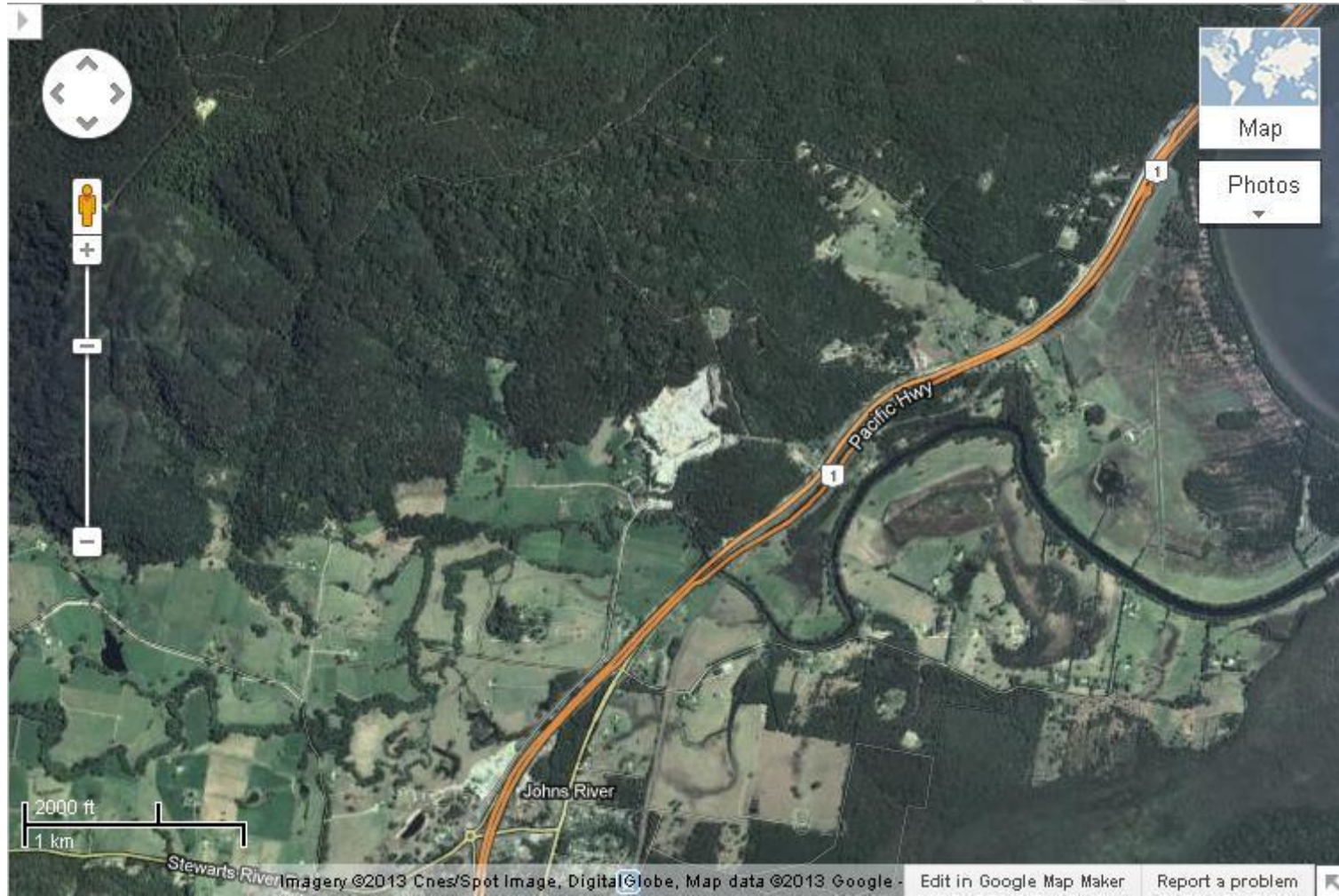
# APPENDIX 4.

## JOHNS RIVER QUARRY REFERENCE MAP



APPENDIX 5.

JOHNS RIVER QUARRY – MAP OF AFFECTED AREAS



## APPENDIX 5.

### POLLUTION INCIDENT NOTIFICATION LOG

Person undertaking notification (Name/Function):		
Date and time when first become aware of the incident:		
Incident type:		
Comments:		

Initial immediate notification log				
Appropriate Regulatory Authority	Time of call	Respondent's name/function	Approximate call duration	Comments
EPA				
Public Health Unit				
Fire and Rescue NSW				
Local Council				
WorkCover				
Other:				
Other:				
Summary of initial communication:				



Person undertaking notification (Name/Function):		
Date and time when additional information become available:		
Comments:		

Immediate notification of further pertinent information (if applicable)				
Appropriate Regulatory Authority	Time of call	Respondent's name/function	Approximate call duration	Comments
EPA				
Public Health Unit				
Fire and Rescue NSW				
Local Council				
WorkCover				
Other:				
Other:				
Summary of additional communication				

## JOHNS RIVER QUARRY PIRMP- Immediate Reporting Contact Sheet

<b>INTERNAL REPORTING</b>			
<b>Name</b>	<b>Function</b>	<b>Phone number</b>	<b>Mobile number</b>
	Quarry Manager		
	Quarry Supervisor		
	HS Business partner		
	Environment Business Partner		
	Snr Environmental Business Partner		

<b>EXTERNAL REPORTING</b>	
<b>Government Authority - compulsory notifications</b>	<b>Emergency notification phone number</b>
EPA – Environment Line	131 555
Fire and Rescue NSW (FRNSW)	1300 729 579
Midcoast Council	02 6592 5399 AH Emergency: 0408 652 662
Public Health Unit (North Coast AHS) – Port Macquarie NC PHU	HealthLink (24 hr)- 1800 063 635 Head Office- Port Macquarie- 6588 2750
SafeWork NSW	131050 Company ABN if asked: 51 000 187 002

*NOTE: A full listing of contact phone numbers of other potentially relevant government agencies is included in the PIRMP.*